

All In For Kansas Kids



Kansas Early Childhood Governance Summit

FEBRUARY 21, 2025



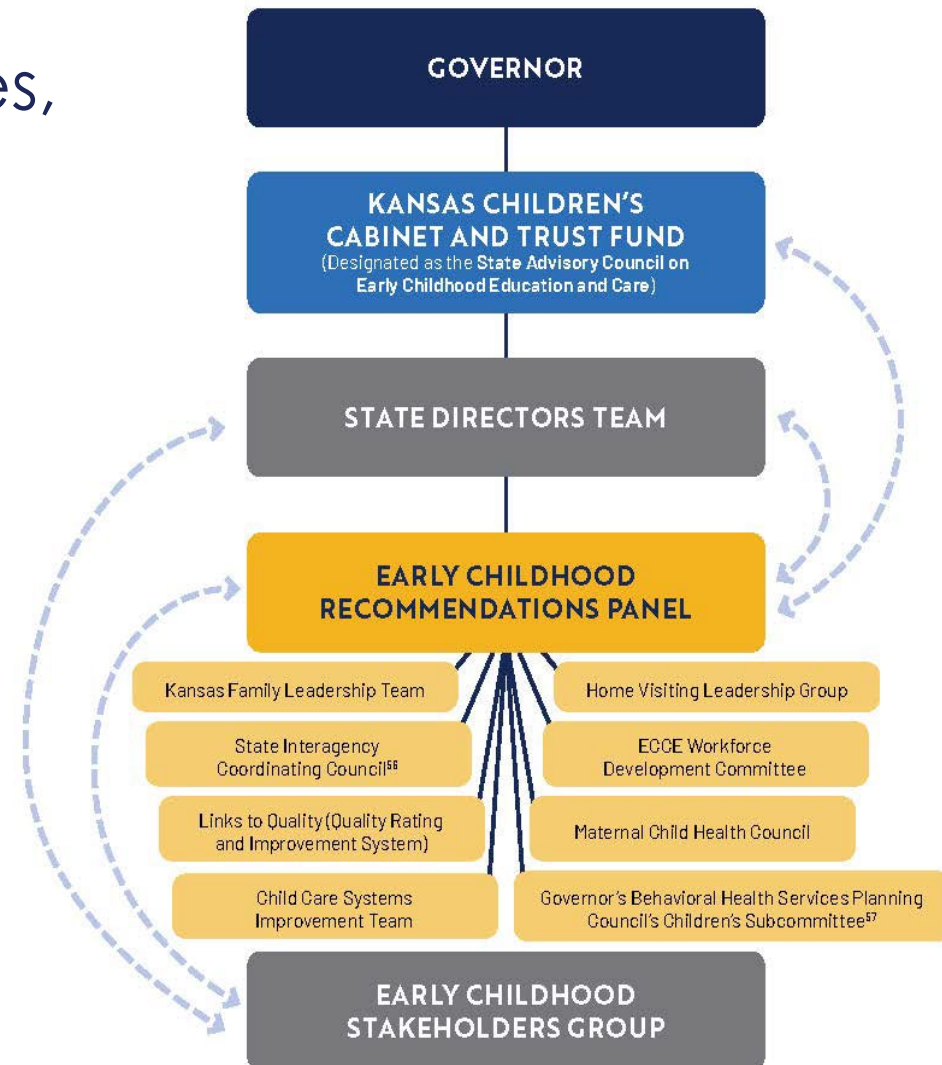
WELCOME

Thank you for serving Kansas children, families, and early childhood care and education professionals!

This event is being live streamed on the Children's Cabinet YouTube channel. The recording and all presentation materials are available on the Children's Cabinet website.



KANSAS EARLY CHILDHOOD GOVERNANCE STRUCTURE



TODAY'S AGENDA

- Welcome address by Melissa Rooker: Executive Director, Kansas Children's Cabinet and Trust Fund
- Early Childhood Legislative Update: John Wilson, Kansas Action for Children
- Governance Groups Presentations – Part 1
- Break – 10 minutes
- Governance Groups Presentations – Part 2
- Next Steps / Closing





Early Childhood Legislative Update

JOHN WILSON, KANSAS ACTION FOR CHILDREN



WHERE ARE WE IN THE 2025 LEGISLATIVE SESSION?

- At the halfway point. The session ends April 12.
- Committees meet between February 25 and March 18.
- Many bills are “dead” for this session and cannot be heard until 2026.

Legislative Update



CHILD CARE & EARLY LEARNING BILLS

- **SB 132** and **HB 2294** (identical bills) would consolidate programs currently in four different state agencies into the Office of Early Childhood. *No hearing scheduled yet.*
- **SB 207** and **HB 2383** (identical bills) would offer child care providers telehealth services, a monthly stipend for prescription medicines, a state match for the gap between the CACFP Tiers, and more. *No hearing scheduled yet.*

Legislative Update



ECONOMIC SECURITY

- **HB 2210** would establish a state child tax credit for ages 0-3. *No hearing scheduled yet.*
- **SB 179** would establish a state child tax credit for ages 0-5. *No hearing scheduled yet.*
- **HB 2119** would eliminate the Kansas affordable housing tax credit. *Passed the House 85-36.*
- **HB 2074** would include renters in the Homestead Property Tax Credit. *Hearing held in House Commerce.*

Legislative Update



HEALTH

- **HB 2386** and **SB 271** (identical bills) would update eligibility with the Children's Health Insurance Program (CHIP). *No hearing scheduled yet.*
- **SB 79** would have the impact of disallowing SNAP recipients from purchasing soda or candy with their benefits card. *Passed the Senate 29-11.*

Legislative Update



BUDGET

- **HB 2007** is the budget for the upcoming fiscal year.
Passed the House 83-36.

Legislative Update



All In For Kansas Kids



Welcome Address

MELISSA ROOKER, KCCTF EXECUTIVE DIRECTOR





Early Childhood Recommendations Panel

CORNELIA STEVENS



EARLY CHILDHOOD RECOMMENDATIONS PANEL

Kansas [Executive Order 20-02](#) designates the Kansas Children's Cabinet and Trust Fund as the State Advisory Council on Early Childhood Education and Care

- The Panel is an advisory group to the Children's Cabinet to support these responsibilities

Meets monthly on the third Friday: 9:00-11:30 a.m.

- Live streamed on the [Children's Cabinet YouTube channel](#)
- [Kansans' Open Forum Comment Form](#): submit written comments or sign up to share verbal comments with the Panel during the Kansans Open Forum portion of the meeting
- Meeting materials are posted at kschildrenscabinet.org/panel-meetings

Overview



EARLY CHILDHOOD RECOMMENDATIONS PANEL

The Children's Cabinet appoints members annually to a one-year term: July 1 through June 30

- Call for membership applications is shared in April

Currently 42 Panel members, representing:

- State Agencies
- Local School Districts
- Higher Education
- Local early childhood care and education providers
- Head Start
- Parents of young children receiving services in Kansas
- Organizations providing early childhood services

Overview



EARLY CHILDHOOD RECOMMENDATIONS PANEL

- The **Panel Work Groups** continued their efforts to implement strategies from the Early Childhood Strategic Plan.
 - **Family Friendly Workplaces** recommendation approved by Children's Cabinet August, 2024
- Throughout the year, the Panel welcomed **presenters** from a broad cross-section of the early childhood system including The Panel would like to encourage Early Childhood Groups to bring work in progress to the Panel for feedback, input, and elevation, as well as to share progress and accomplishments.
- Representatives from state agencies, organizations, and community partners from the Kansas Early Childhood Governance System met on February 16, 2024 for the 3rd annual **Kansas Early Childhood Governance Summit** to share their work and report how their progress aligns with the *All in for Kansas Kids* **Strategic Plan**.

Accomplishments



EARLY CHILDHOOD RECOMMENDATIONS PANEL

Panel Work Groups will continue work to develop recommendations to implement the [AIFKK Strategic Plan](#)

- **Family Friendly Workplaces**
- **Exit Interviews (Work Force)**
- **Mental Health Supports (Work Force)**
- **Targeted Journey Recruitment (Work Force)**
- **System Progress Communication**

Future Efforts



EARLY CHILDHOOD RECOMMENDATIONS PANEL

Cornelia Stevens, Chair

TOP Early Learning Centers,
Executive Director

cstevens@topelc.com

Lindsay Orion, Panel Support

KU CPPR, Research Project Manager

lindsayorion@ku.edu

Contact



All In For Kansas Kids



Workforce Development Advisory Group

CHELSEA SCHULTE



WORKFORCE DEVELOPMENT ADVISORY GROUP

The Workforce Development Advisory Group (WDAG) was established in 2013 and is a function of the Child Care Workforce Professional Development contract held by Kansas Child Care Training Opportunities (KCCTO). The goal and focus of the WDAG are as follows:

- **Goal:** Provide ongoing connections with early childhood practitioners who provide early education and care to Kansas children and their families
- **Focus:** Collaboration to advance and improve the early childhood professional development system in Kansas

Members of the WDAG include representatives from state agencies, professional development organizations, higher education, and direct service professionals. Individuals interested in joining the WDAG can complete the [WDAG New Member Interest Form](#).

Overview



KCCTO
Kansas Child Care Training Opportunities

WORKFORCE DEVELOPMENT ADVISORY GROUP

Workgroups are formed by the WDAG when targeted efforts are needed around a particular topic. The following groups were either formed out of the larger WDAG or were formed externally but are relevant to the WDAG work. Workgroups typically meet more frequently than the large group to assess, plan, discuss, review and draft recommendations.

- Equity, Inclusion, and Diversity
- Core Competencies
- Individualized Professional Development Plans
- Evaluation and Needs Assessment
- Collaborative TA Network
- Trainer Approval System
- Training Approval System

Accomplishments



WORKFORCE DEVELOPMENT ADVISORY GROUP

- Review data from the comprehensive workforce study and collect feedback from the field to identify gaps or needs related to the professional development system.
- Explore potential improvements to the professional development system in collaboration with relevant partners to make informed recommendations.

Future Efforts



WORKFORCE DEVELOPMENT ADVISORY GROUP

Chelsea Schulte

Associate Director of Programs

Kansas Child Care Training Opportunities

(785) 532-7197

cmitch@ksu.edu

www.kccto.org

Contact



KCCTO
Kansas Child Care Training Opportunities



Child Care Systems Improvement Team

MELISSA SCHOENBERGER



CHILD CARE SYSTEMS IMPROVEMENT TEAM

- Advisory group to KDHE that focuses on Child Care Licensing
- Started work again in 2020 after a several year break as part of PDG
- The group is comprised of representatives from across the state and early childhood care and education system

Overview



CHILD CARE SYSTEMS IMPROVEMENT TEAM

2024 – 2025 Regional Roundtables

- CCSIT is eliciting feedback and welcomes any thoughts within the early childhood ecosystem in Kansas. Two have been held to date in Abilene and Topeka with upcoming in Wichita on March 12 and Garden City in May.
- These events are open to the public.

Accomplishments



Child Care Licensing Regional Roundtable

South Central Kansas



**Are You A Child Care Professional
Or A Caregiver For A Young Child?**



Register Today!


We want to hear from you.
This event is open to the public.

Join us to share your experiences with child
care in your region.

For questions contact Meghan Kluth
at mkluth@ku.edu

 **Child Start**

1002 S. Oliver
Wichita, KS 67218

 **March 12, 2025**
6:30-8:00 pm

All In For
Kansas Kids 

 child
care
matters

CHILD CARE SYSTEMS IMPROVEMENT TEAM

- CCSIT members are reviewing what attendees share about what is working well and where there are opportunities for improvement throughout the state
- Ultimately the group will develop recommendations to address regional needs
- We're working on a process to share progress back with attendees and the early childhood system more broadly

Future Efforts



CHILD CARE SYSTEMS IMPROVEMENT TEAM

Licensing Specialist Core Competencies

- KDHE has drafted Core Competencies for Licensing Specialists
- This month the CCSIT reviewed these and provided feedback to ensure the language and expectations are appropriate and clear
- The goal is to create more consistency across the position

Additional Efforts



CHILD CARE SYSTEMS IMPROVEMENT TEAM

Melissa Schoenberger

KDHE, Director of Systems & Field Services

Child Care Licensing

Bureau of Family Health

(785) 207- 0623

melissa.schoenberger@ks.gov



Contact





Family First Prevention Services

Kansas Interagency and Community Advisory Board
and Family First Family Council

KAELA BYERS, PHD, MSW & MEGHAN CIZEK, MA, LCSW



FAMILY FIRST PREVENTION SERVICES

Family First Prevention Services shifts the focus of the child welfare system toward keeping children safe with their families and avoiding entry into foster care through holistic community-based support.

Family First funding can be used for prevention services in four domains:

- Mental health services
- Substance use treatment
- In-home parent skill-based
- Kinship navigation

Overview



FAMILY FIRST OVERSIGHT AND ACCOUNTABILITY

State

- DCF
- Approved 5-year prevention plan
- Thriving Families vision

Community

- Interagency and Community Advisory Board (ICAB)
 - State agencies
 - Community providers
 - Family Council representatives

Families

- Family Council
 - 21 members with lived expertise with child welfare and/or prevention services

Overview



FAMILY FIRST FAMILY IMPACT

- Families who complete Family First services have experienced significant improvement in outcomes of:
 - Child social-emotional functioning
 - Caregiver mental health (i.e., depression, anxiety, stress)
 - Caregiver perception of parenting skill
 - Caregiver substance use
- Permanency in one year is 51% more likely among families receiving Family First than other prevention programs
- 90% of families receiving Family First programs remain safely together one year after referral



Accomplishments



FAMILY FIRST SYSTEM IMPACT

Monitoring of Family First Implementation

- Continuous review of lessons learned and outcome monitoring by ICAB and Family Council.
- Recommendations related to service array, access, and system support.
- Rapid cycle feedback loops supporting accountability to families/community.

Shaping Prevention Vision

- DCF invited the Family Council to draft a new vision for the upcoming renewal of the Title IV-E Five-Year State Prevention Plan, which guides Family First services in Kansas.
- Key system changes are under consideration for phased adoption and implementation under the next Five-Year Plan (e.g., community access pathway, peer support, concrete supports).

Accomplishments



ICAB AND FAMILY COUNCIL

2025 ICAB restructure aimed at:

Optimizing Impact

- Restructured to align to Thriving Families vision.

Strengthening Membership for Policy Impact and Accountability

- Membership revised to regional champions across service sectors (e.g., early childhood, behavioral health, education), a larger representation of lived experts, and key statewide decision-makers.
- Recommendations are elevated and resulting decisions and system changes are reported back through rapid cycle accountability processes.

Additional Efforts



ICAB AND FAMILY COUNCIL

2025 Priorities

ICAB

- Conduct policy review of barriers to formal employment of lived experts.
- Increase awareness about family support among mandated reporter groups.
- Explore additional prevention service models for consideration

Family Council

- Advise DCF on prevention programming and policy to enhance access to resources and support
- Develop tools and resources to support family service access and navigation

Future Efforts



FAMILY FIRST AND STATEWIDE ICAB

Kaela Byers, PhD, MSW

KU CPPR, Associate Director

kaela@ku.edu

Meghan Cizek, MA, LCSW

KU CPPR, Assistant Director

mcizek@ku.edu

Contact





Kansas Maternal Child Health Council

JENNIFER MILLER



KANSAS MATERNAL CHILD HEALTH COUNCIL

The purpose of Kansas Maternal Child Health Council (KMCHC) is to advise the Secretary of Health and Environment, and others, on ways to improve the health of families in Kansas, focusing on the MCH population. The Council brings together several organizations and groups in Kansas with a broad range of expertise, including many who have been working for years to address and improve health outcomes in Kansas and other states.

Overview



KANSAS MATERNAL CHILD HEALTH COUNCIL

The Council:

- Encourages the exchange of information about women, infants, children and adolescents
- Advises on progress addressing specific MCH population needs
- Creates private and public-sector support for improving MCH health outcomes in Kansas
- Helps focus efforts among partners and recommends collaborative initiatives
- Submits an annual report summarizing the Council's work and making recommendations to the Secretary of Health and Environment each year

Overview



KANSAS MATERNAL CHILD HEALTH COUNCIL

Large Group Discussions:

- In July 2023, The Council heard presentations from key stakeholders on two Home Visiting Initiatives.
- In September 2023, the focus was on Diversity, Equity, and Inclusion, with updates on the Governor's Racial Equity and Justice report on the MCH population. KDHE also presented its Palliative Care 5-year plan.
- In January 2024, The Council examined various MCH data, including the KDHE Data Dashboard, Maternal Mortality Data, and Pregnancy Risk Assessment Monitoring System (PRAMS) data, and reviewed KMCHC Member Survey Results. Feedback from the HRSA Site Visit Review was also discussed.
- In April 2024, The Council added Member Updates to its agenda, and the Kansas Chapter of the American Academy of Pediatrics presented its Medicaid Unwinding Community Project. The Council reviewed the Title V—Kansas MCHC Program Needs Assessment plan, analyzed the 2024 legislative session, and continued its focus on addressing inequities.

Accomplishments



KANSAS MATERNAL CHILD HEALTH COUNCIL

Data Insights and Analysis

- Each meeting featured relevant data related to the main discussion topics.

Small Group Work:

- The primary focus for 2024 was engaging members in collaborative efforts to advance the State Action Plan and align with ongoing state initiatives. Through their discussions, data analyses, and interest in partnering, the KMCHC continued to play a crucial role in advancing maternal and child health in Kansas.

Accomplishments



KANSAS MATERNAL CHILD HEALTH COUNCIL

Over the course of the next year, the KMCH Council will continue to:

- Work on and complete ongoing special projects.
- As a key advisor to the Kansas Title V program, the KMCHC will be provided the opportunity to review and provide feedback on the next 5-year State Action Plan that is due to our federal partners in July 2025.
- The Executive Team will also review the By-Laws to identify any necessary revisions.
- Strive to diversify membership and engage more partners in this important work.

Future Efforts



KANSAS MATERNAL CHILD HEALTH COUNCIL

Jennifer Miller, DrPH

State MCH Director

(785) 296-1205

jennifer.m.miller@ks.gov



KANSAS
MATERNAL &
CHILD HEALTH

Contact



All In For Kansas Kids



Family Advisory Council

ALI BRAUN



FAMILY ADVISORY COUNCIL

The Bureau of Family Health's Family Advisory Council also known as the FAC, consist of families from across Kansas who provide guidance to KDHE on how to best support mothers, infants, children and child/youth with special health care needs.

Overview



FAMILY ADVISORY COUNCIL

Our council currently has five (5) core work groups that reflect MCH populations:

- Women/Maternal
- Early Childhood (birth – age 5)
- Child (ages 6 – 11)
- Adolescence (ages 12+)
- Children with Special Health Care Needs (CSHCN)

Overview



FAMILY ADVISORY COUNCIL

The FAC meets 4 times a year, 3 virtual meetings with one in person.

- During a council meeting, there is time for the whole group to come together for larger group work, often focused on cross-cutting initiatives and system-wide presentations that highlight work happening across our state.
- Members are also given time for their work groups to focus on the "project" each group has selected, based on our current Title V State Action Plan.

Overview



FAMILY ADVISORY COUNCIL

- The Child group and Adolescents group paired up to present at the Parent Leadership Conference in September 2024. Their presentation was on parent feedback, there was great discussion with participants.
- The CSHCN and Early Childhood work groups will be working with 1800 children this year.

Accomplishments



FAMILY ADVISORY COUNCIL

- After reviewing the current representation in our FAC, we noticed a lack of members with children under the age of 5. To address this, plan to attend community baby showers in the spring to recruit new members for the FAC.
- Plan to expand our FAC work groups to include a fatherhood/non-birthing partner group.
- As funding is available, would also like to send more FAC members to present at conferences.

Future Efforts



FAMILY ADVISORY COUNCIL

Ali Braun

KDHE, Family Systems Consultant

(785)559-1297

aletheia.braun@ks.gov

Contact



All In For Kansas Kids



State Home Visiting
Leadership Group

HOLLY FRYE & LISA WILLIAMS



STATE HOME VISITING LEADERSHIP GROUP

The State Home Visiting Leadership Group's purpose is to recommend home visiting practice, policy standards and system changes to the Kansas Children's Cabinet to ensure every child thrives.

Overview



STATE HOME VISITING LEADERSHIP GROUP

The Home Visiting group is co-led by:

- Holly Frye, Home Visiting Program Consultant from KDHE
- Lisa Williams, Parents as Teachers Coordinator from KSDE

Participation from the following organizations rounds out the group:

- Kansas Children's Service League (Healthy Families America)
- Kansas Department for Children and Families (Early Head Start and Family First)
- Kansas Head Start Association
- Kansas Parents as Teachers Association
- University of Kansas Center for Public Partnerships and Research (CPPR)

Overview



STATE HOME VISITING LEADERSHIP GROUP

Progress and Accomplishments

- Hosted the 2024 Kansas Virtual Home Visiting Conference
- Restructured the State Home Visiting Leadership Group membership
- Set four priorities for enhancing home visiting delivery in Kansas
- Readiness Assessment: plan for bringing on new Maternal, Infant, and Early Childhood Home Visiting communities
- Assessed home visiting representation on various Early Childhood committees to determine gaps and plan for better representation

Accomplishments



STATE HOME VISITING LEADERSHIP GROUP

Upcoming Efforts and Goals

Host the 2025 Kansas Home Visiting Conference in person across multiple regions of the state.

- Develop an action plan to achieve SHVL priorities.
- Ensure home visiting representation in Early Childhood systems conversations
- Coordinate efforts for Kansas Home Visiting Programs Day at the Capitol on March 5.
- Enhance the content of kshomevisiting.org to better reflect the full continuum of home visiting services available in Kansas.

Future Efforts



STATE HOME VISITING LEADERSHIP GROUP

Holly Frye

KDHE, Home Visiting Program Consultant

(785) 296-1308

holly.m.frye@ks.gov

Lisa Williams

KSDE, Parents as Teachers Coordinator

lisa.williams@ksde.gov

Contact



All In For Kansas Kids



BREAK



All In For Kansas Kids



Kansas Early Learning Standards

NATALIE MCCLANE

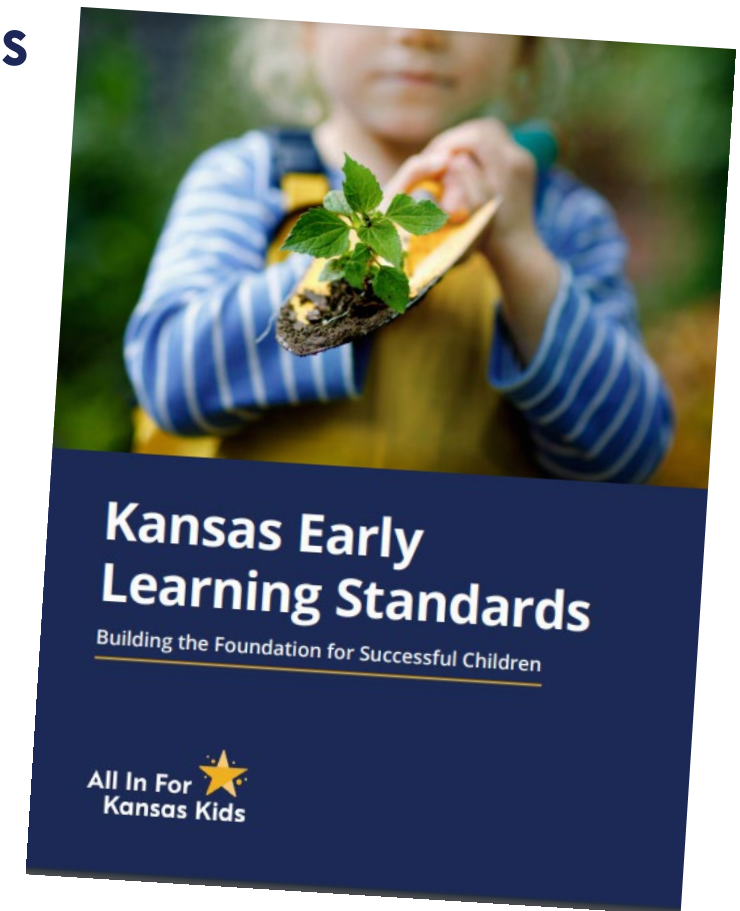


KANSAS EARLY LEARNING STANDARDS

The Kansas Early Learning Standards Team is comprised of Early Childhood Partners from across the state with representatives from all aspects of Kansas's Early Childhood Care and Education Workforce.

- Our efforts over the past couple of years has centered around updating the Kansas Early Learning Standards (KELS) as well as developing training and resources to accompany them.

Overview



KANSAS EARLY LEARNING STANDARDS

In the past year, work has centered around distribution of the updated Kansas Early Learning Standards, creation of training and resources to use with them, and development of a website to enable easy access to it all.

- KELS.KSDE.gov is the website that was created to house the updated standards. Here, anyone can access the KELS digitally in both English and Spanish as well as order printed copies.
- The site also offers training, including short videos and a full KELS course by Kansas Child Care Training Opportunities (KCCTO), along with resources to help those working with young children incorporate KELS into their practices.
- Distribution of printed copies has occurred, with an initial 12,390 sent to Licensed Family Child Care Homes, Centers, Preschools, School-Aged Programs, Infant/Toddler Part C Providers, School District Staff, Cooperatives, Interlocals, and Head Start Programs. Since then, 134 Spanish and 564 English copies have been shipped through the website.

Accomplishments



You can find the updated **KELS** online [here](#)

KANSAS EARLY LEARNING STANDARDS

1. Continued Distribution of Printed Copies

2. Development of Training and Resource Development

- This will include crosswalks with the most used early childhood curricula from across the state.

3. Development of Website

- Aim to develop and strengthen awareness of the [KELS.KSDE.gov](https://kels.ksde.gov) website.

Future Efforts



KANSAS EARLY LEARNING STANDARDS

Natalie McClane

KSDE, Early Childhood

Preschool Programs Coordinator

(785) 296-5081

natalie.mcclane@ksde.gov

Contact





Family Leadership Team

CORA UNGERER & ALI BRAUN



FAMILY LEADERSHIP TEAM

The Family Leadership Team (FLT) was established in 2021 as part of the Preschool Development Grant (PDG) and the All In For Kansas Kids (AIFKK) strategic plan. This initiative was built on the recognition that family voices are essential and that meaningful partnerships with families create stronger, more effective systems.

The FLT serves as a working group dedicated to the following goals:

- Informing, supporting, and advising on issues that impact families.
- Developing initiatives that engage families in systems-level change.
- Promoting collaboration between families, community services, and state agencies.
- Strengthening coordination within the Early Childhood Care and Education (ECCE) System at both the state and community levels.

Overview



FAMILY LEADERSHIP TEAM

Guiding Principles for the FLT were developed in partnership with families and program leaders, the FLT is driven by these core beliefs:

- Family engagement is foundational to understanding the real experiences of those served by state and community programs.
- Involving families in program planning, design, implementation, and evaluation ensures services truly meet their needs.
- Strong family engagement fosters healthy development and overall well-being for children, youth, and families in Kansas.
- Empowering families helps prevent child abuse, supports school readiness, promotes economic success, and strengthens parenting skills.
- A multi-generational, strengths-based, and family-centered approach is the most effective way to support families.
- “Family” looks different for everyone, and it is important to include diverse family representatives on the FLT to bolster the voices of all families.

Overview



FAMILY LEADERSHIP TEAM

Building a Collaborative & Inclusive Team

- The goal is to create a diverse and dynamic FLT, bringing together family members who are strong advocates for their families and communities, and state agency leaders and program staff who provide services for families, particularly in early childhood.
- By working together, agencies and program staff recognize the importance of family engagement and actively support elevating family voices to drive positive, lasting change throughout Kansas.

Overview



FAMILY LEADERSHIP TEAM

At the start of 2024, we announced a series of family and caregiver roundtable sessions—which quickly evolved into the Parent/Provider Fireside Chats held nearly every month throughout the year. These sessions provided a valuable platform for parents and caregivers to gain direct access to information about state-level programs and services while engaging in meaningful discussions with knowledgeable providers.

Topics of 2024 were:

- 1-800-CHILDREN
- ASQ Screenings
- Resources for kids age 5-8
- Home Visiting
- Prenatal to postpartum
- In-person discussion on family resources

Key highlights and takeaways from these events were shared on the All in For Kansas Kids website, ensuring families across the state could benefit from the insights and resources provided.

Accomplishments



FAMILY LEADERSHIP TEAM

Goals for 2025:

- With the addition of KDHE's new Family Systems Consultant, we are committed to enhancing collaboration and engagement with families. This year, we will host four additional Fireside Chats, focusing on topics that parents have identified as important.
- Additionally, the Family Leadership Team will prioritize a key need expressed by both families and providers across the state—bringing specialized leadership training to Kansas. This initiative aims to empower individuals to become strong family leaders within their communities.

While much of 2025 will focus on exploration and learning, we are excited about the possibilities ahead. Stay tuned for more updates as we move forward!

Future Efforts



FAMILY LEADERSHIP TEAM

Cora Ungerer

KDHE, Title V CSHCN Director

cora.ungerer@ks.gov

Ali Braun

KDHE, Family Systems Consultant

aletheia.braun@ks.gov

Contact





Kansas State Interagency Coordinating Council

KATHY KERSENBROCK-OSTMEYER



KANSAS STATE INTERAGENCY COORDINATING COUNCIL

Mission: The SICCC is to ensure that a comprehensive service delivery system of integrated services is available in Kansas to all children with, or at risk of, developmental delays or disabilities from birth through age five and their families

SICCC Establishment and Funding Sources

- The SICCC is established in federal and state regulations
- Funded by DCF, KDHE, and KSDE

Service Programs

- Part C – Infant Toddler Services/Focus on home visiting
- Part B 619 – Special Education Services/For children aged 3 to kindergarten

Program Support and Structure

- Supports 29 Infant Toddler Programs
- Collaborates with Local Interagency Coordinating Councils (LIACC)
- Infant toddler programs funded in part by grants from Kansas Early Childhood Developmental Services at KDHE

Overview



KANSAS STATE INTERAGENCY COORDINATING COUNCIL

Progress and Accomplishments

- LICC Offer grants up to \$2000 a year to support increased family involvement and to support community awareness of services available to young children.
 - In 2024, \$33,931 was granted.
 - In 2025, we're on track to grant more.

Accomplishments



KANSAS STATE INTERAGENCY COORDINATING COUNCIL

- **Goal One:** Medicaid - Review and utilize existing Medicaid research and data to maximize funding for infant toddler services.
- **Goal Two:** Categorical Aid - Research and review strategies to maximize categorical aid reimbursement to Part C and Section 619 programs.
- **Goal Three:** Inclusion - Assist and advise infant toddler programs and early childhood programs on natural environments and Least Restrictive Environments.

Future Efforts



KANSAS STATE INTERAGENCY COORDINATING COUNCIL

Goal Four: Promote the management and function of the SICCC as it aligns and compliments the All in for Kansas Kids strategic plan.

- Centralize reliable resources and information for parents.
- Increase mental health resources for providers and caregivers.
- Collaborate to improve local workforce recruitment and retention.

Goal Five: Support LICCs - to maximize their role of serving children in their communities.

- Offer relevant, professional learning opportunities through the Fall LICC Retreat
- Increase effectiveness of LICC through surveys

Future Efforts



KANSAS STATE INTERAGENCY COORDINATING COUNCIL

Kathy Kersenbrock-Ostmeyer

SICC Chair

kansasicc@ksde.gov

Contact



All In For Kansas Kids



Kansas Early Childhood Data Trust Governance Board

JARED BARTON, PHD MSW



KANSAS EARLY CHILDHOOD DATA TRUST

An important initiative of All In For Kansas Kids is the Kansas Early Childhood Data Trust (Data Trust). This work reflects the commitment of five state agencies to share data and information to improve the quality, effectiveness, and equity of programs and services for Kansas children and families.

Collaboration and Commitment

- Our state agencies are dedicated to working together, using the best possible information available to make data-informed decisions.
- These decisions support child and family well-being in communities across Kansas.
- The Data Trust makes this critical work possible.

Overview



KANSAS EARLY CHILDHOOD DATA TRUST

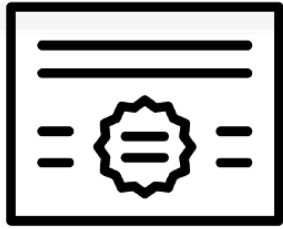
The Data Trust representatives collaborate to drive initiatives that involve combining two or more data sets from different state-level agencies

- Initiatives, referred to as "authorized projects," undergo a formal data-sharing agreement process before any matching, analysis, or other prescribed activities begin.
- Findings are presented and shared.
- Lessons learned, best practices, and insights from one authorized project can be applied to other authorized projects to enhance the overall functioning of the Data Trust.

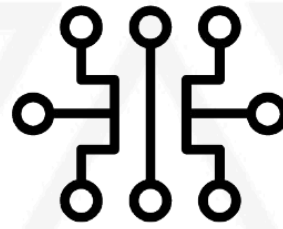
Overview



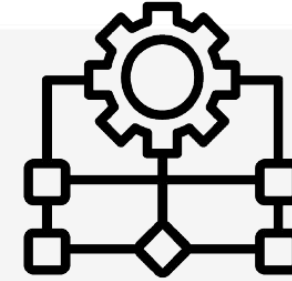
KANSAS ECIDS GOVERNANCE & ROLES



Legal and Ethical
Framework



Technical
Standards and Tools



Data Governance
Process

Data Trust Agreement
2021

- Multi-agency agreement to create and govern Data Trust

Project Specific Data Sharing Agreements

- Authorized Project DSAs for specific integration

KS Data Trust Assets and Resources

- Resource library of data and systems review across agencies
- Data dictionaries, schematics, ontology map
- Agency staff use cases, requests, gaps

KS Data Trust Governance Board

- Trustee - KCCTF
- Members – KSDE, KDHE, DCF, DoC
- Technical Trustee – KU CPPR
- Quarterly Board meetings

KANSAS EARLY CHILDHOOD DATA TRUST

The Data Trust currently oversees three authorized projects:

1. The Cumulative Prevention Effect: Reducing foster care removals through early childhood services. This project is a longitudinal analysis looking at data sets from the Kansas Department for Children and Families and the Kansas Children's Cabinet and investigates whether participation in ECBG and/or CBCAP was associated with reduction in child removals into foster care. This analysis was initiated in 2021, and updated in 2024, finding:

- Participation in early childhood services reduced the likelihood of foster care removals by 28%.
- 96% of children participating in early childhood services were not removed into foster care from 2015 to 2024.
- 384 children from birth to age 8 would have likely been removed into foster care between 2015 and 2024 had they not received ECBG or CBCAP services.

Accomplishments



KANSAS EARLY CHILDHOOD DATA TRUST

2. Distinct Count of Children in Early Care and Education Services: Launched in December 2023, enhancements to the dashboard in 2024 included:

- Longitudinal datasets to which state agencies contribute new data each year. This enhancement allows users to analyze historical trends at county and regional levels.
- Population-level data including county-level data overlays from the US Census population estimates. This enhancement shows the proportion of children receiving services across the state in relation to the population of children in the county or region, which helps identify needs and gaps in service provision across the state.

Accomplishments



KANSAS EARLY CHILDHOOD DATA TRUST

3. State Longitudinal Data Sharing Pilot: The goal of this project was to pilot a process for linking records between one early childhood data source and the data system identified for use in the State Longitudinal Data System (SLDS) grant in execution by KSDE.

- A data sharing agreement was signed May 2024 and early matching efforts appear promising to meet the needs of the grant and provide valuable insights of the impact of early childhood services on children's experience in the K-12 system.

Accomplishments



KANSAS EARLY CHILDHOOD DATA TRUST

- KSDE, as a key member of the Data Trust, plays a vital role in advancing state longitudinal data system efforts.
- Ongoing discussions are exploring exciting ideas, such as matching large datasets between early childhood and K-12 systems.
- Enhancements to existing resources, like the dashboard, are also being actively pursued.

Future Efforts



KANSAS EARLY CHILDHOOD DATA TRUST

Jared Barton, PhD, MSW

KU CPPR, Director

785-864-7440

jaredlee@ku.edu

Contact





Quality Recognition and Improvement System Advisory Board

SARAH MINSHULL



QRIS ADVISORY BOARD

Child Care Aware of Kansas

Mission: Connecting families, child care providers, businesses, and community leaders to resources that support a high-quality early childhood care and education system.

Services Provided

- Families: Child care referrals and resources
- Providers: Professional development and technical assistance
- Policymakers: Data and advocacy support
- Employers: Workforce support and family-friendly initiatives

Through a network of regional Resource and Referral Agencies, we ensure all Kansas families have equitable access to quality child care, strengthening communities and the state's future.

Overview



QRIS ADVISORY BOARD

Statewide Shared Services Expansion

- 5 network hubs now offer services such as tax education, a lending library, substitute services, and more.
- Providers have accessed essential services—including IRA payments, health benefits, HR support, and substitutes—over 1,300 times.

Child Care Management Software Growth

- Nearly 1,000 providers statewide are using this tool to streamline business tasks and improve efficiency.

Launch of Links to Quality

- This initiative is now live, supporting child care providers in quality improvement efforts

Accomplishments



QRIS ADVISORY BOARD

Increasing Access to Quality Support

- Expanding Links to Quality statewide to ensure more providers can access quality support.

Enhancing the QRIS in Kansas

- Strengthening Kansas' QRIS by fostering more connections and enhancing quality improvement efforts.

Ensuring the Longevity of Shared Services

- Sustaining and growing Shared Services through local sustainability planning for hubs and exploring partnerships for continued provider support.

Together, we're building a stronger, more connected early childhood system in Kansas!

Future Efforts



QRIS ADVISORY BOARD

Sarah Minshull

Child Care Aware, Director of Innovation,
Programs, and Strategy

info@ks.childcareaware.org

Website: ks.childcareaware.org



Program Funding Partner

Contact



All In For Kansas Kids



Governor's Behavioral Health
Services Planning Council's
Children's Subcommittee

NANETTE PERRIN



BEHAVIORAL HEALTH SERVICES PLANNING COUNCIL'S CHILDREN'S SUBCOMMITTEE

The Children's Subcommittee generates recommendations for the Governor's Behavioral Health Services Planning Council (GBHSPC) regarding the Behavioral Health System of Kansas as it relates to Kansas children and their families.

- The GBHSPC reviews not just this subcommittee's recommendations but other existing subcommittees and presents all Behavioral Health recommendations to the Secretary of KDADS and the governor.
- It is acknowledged that although the priority focus of the GBHSPC are the SPMI and SED target populations ([Federal law 102-321](#)), the work of the subcommittee is to be conducted with the whole system and all Kansas citizens with behavioral health needs in mind.

Overview



BEHAVIORAL HEALTH SERVICES PLANNING COUNCIL'S CHILDREN'S SUBCOMMITTEE

Goal 1: KSKidsMAP

Continue to serve as the advisory council and support the sustainability of the KSKidsMAP program.

Progress: KSKidsMap report showing increase numbers of participants in the program.

- 40% increase in coverage for rural areas
- 22% in medically underserved
- 93 tele-ECHO clinics held
- 135 cases reviewed as part of the Interprofessional Child-Centered Integrated Care (ICX2)

Accomplishments
and Goals



BEHAVIORAL HEALTH SERVICES PLANNING COUNCIL'S CHILDREN'S SUBCOMMITTEE

Goal 2: Support initiatives for Transitional Age Youth, with a particular emphasis on the IDD population and supporting the families.

- KSDE new transition coordinator with CDDO, bring back the coalitions, readiness skills
- New graduation requirements to assist families with understanding the experiences with FAFSA and having experiential activities as part of their graduation requirement.
- Community Support Waiver to help those on the waiting list.

**Accomplishments
and Goals**



BEHAVIORAL HEALTH SERVICES PLANNING COUNCIL'S CHILDREN'S SUBCOMMITTEE

Goal #2 Progress: Supporting transitional age youth through DCF programs:

- We Kan Drive, drivers' education program.
- Pre-Employment Transition Services (PRE-ETS), Employing youth with Disabilities.
- SOUL Family, new proposed legal permanency option.
- Foster Youth to Independence Tenant Protection Vouchers (FYI), addresses gaps in housing through Public Housing Authorities.
- Data on Transitioning Youth
- Need legislation to support for SOUL to overcome the disincentives for other permanency options and amending state Medicaid plan to be eligible for Medicaid - Passed
- Any connections with Housing Authority
- Additional funding for the programs
- Supporting Youth through YLINK, need funding to continue to build this prevention effort especially how they intersection with the youth in foster care moving out of the system.

**Accomplishments
and Goals**



BEHAVIORAL HEALTH SERVICES PLANNING COUNCIL'S CHILDREN'S SUBCOMMITTEE

Goal 3: Childhood MH services, focusing on prevention, positive childhood experiences and healthy pregnancy/postpartum impact on development and what resources would be needed through the development in the early years.

- Progress: Supporting infant and early childhood through:
 - Kansas Connecting Communities
 - 0-5 work through KDADS and DCF
 - Establish a perinatal mental health committee to further the support for moms and babies.

**Accomplishments
and Goals**



BEHAVIORAL HEALTH SERVICES PLANNING COUNCIL'S CHILDREN'S SUBCOMMITTEE

Growth Opportunities:

- Support the Community Support Waiver to assist families access services to maintain their children in the community.
- Fund and develop specialty PRTFs for the difficult to treat complex populations.
- Continue to support KsKidsMap funding.
- Ongoing investigation into the implementation of DC 0-5, development of the state plan amendment for EC/DC 0-5, and continued growth of Drug Endangered Children Coalitions across the state.

The Children's subcommittee will take on the review and oversight of the Postpartum work that is needed in the state now that the 12-month extension is in place.

Future Efforts



BEHAVIORAL HEALTH SERVICES PLANNING COUNCIL'S CHILDREN'S SUBCOMMITTEE

Nanette L. Perrin, PhD, BCBA-D, LBA

Senior Director, LifeShare and Social
Determinants of Health

nanette.l.perrin@sunflowerhealthplan.com

Contact



THANK YOU FOR PARTICIPATING!

○ Bright Spots!

- We invite Panel members and other Early Childhood Representatives to come off mute and share bright spots
- Keep an eye out for the Early Childhood Governance Summit event summary on the Children's Cabinet website:
<https://kschildrenscabinet.org/>
- Contact Lindsay Orion, lindsayorion@ku.edu, with follow up questions or requests for information

**Bright Spots &
Next Steps**





Stay Up to Date



[ALL IN FOR KANSAS KIDS NEWSLETTER](#)



[@KCCTF](#)



[KANSASCHILDRENSCABINET](#)

