

All In For Kansas Kids



Strengthening Early Childhood in Kansas

WEBINAR NOVEMBER 13, 2024



WELCOME

- Webinar Cadence
 - AIFKK webinars will be held every 2nd Wednesday of the month in 2024
- Sign up to receive our All In For Kansas Kids e-Newsletter on the Children's Cabinet website – <http://www.kschildrenscabinet.org/>
- Presentation on the new Cape Portal by Haley Hynek of KCCTO. Child Care Systems Improvement Updates by Melissa Schoenberger of KDHE
- Early Childhood Systems Updates

Agenda



2024 Webinar Schedule

~~January 10th~~
~~February 14th~~
~~March 13th~~
~~April 10th~~
~~May 8th~~
~~June 12th~~
~~July 10th~~
~~August 14th~~
~~September 11th~~
~~October 9th~~
November 13th
December 11th

Cape

*Your career and professional
empowerment portal*

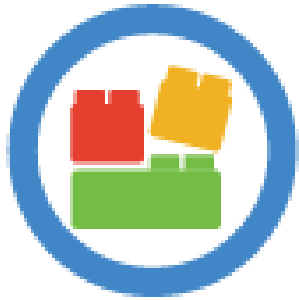
*Support for wherever you are on your journey
as an early childhood professional.*



Workforce Investments

Noted in the 2024 Needs Assessment.

**All In For
Kansas Kids** 



Core Competencies

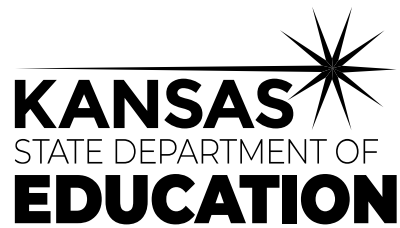


Career Pathway



YourCape.org
Workforce portal

Early Childhood Collaborations





Empowered & Connected

Why Cape?

Some of your challenges:

- *Navigating multiple systems*
- *Facing barriers to information*
- *Feeling undervalued and potentially burnt out*

Why Cape?

- Empower the workforce to manage their own professional development and career growth.
- Support professionals as they progress along a career pathway.
- Align and streamline processes across systems and organizations to reduce burden and duplication of effort. Reduce reliance on paper forms and other documents while prioritizing user privacy and portal security.
- Gather insights from aggregate data about Cape use.
- Operationalize these insights to improve offerings, inform policy, and guide investments for the early childhood workforce.



Professionals



What Can You Do in Cape?

- *Create a profile that reflects your education and tracks your goals, training, and experience.*
- *Access professional development opportunities and resources that guide you toward your goals. Cape organizes offerings from Kansas Child Care Training Opportunities, Child Care Aware of Kansas and more into a single portal for easy access.*
- *Search courses by location, subject matter, delivery language, and more.*
- *Register and pay for courses directly in the Cape portal.*
- *Request technical assistance and mentorship through Cape.*
- *Navigate the Career Pathway to access learning, credentials, and degree opportunities all along your journey.*

Cape

Early 2025



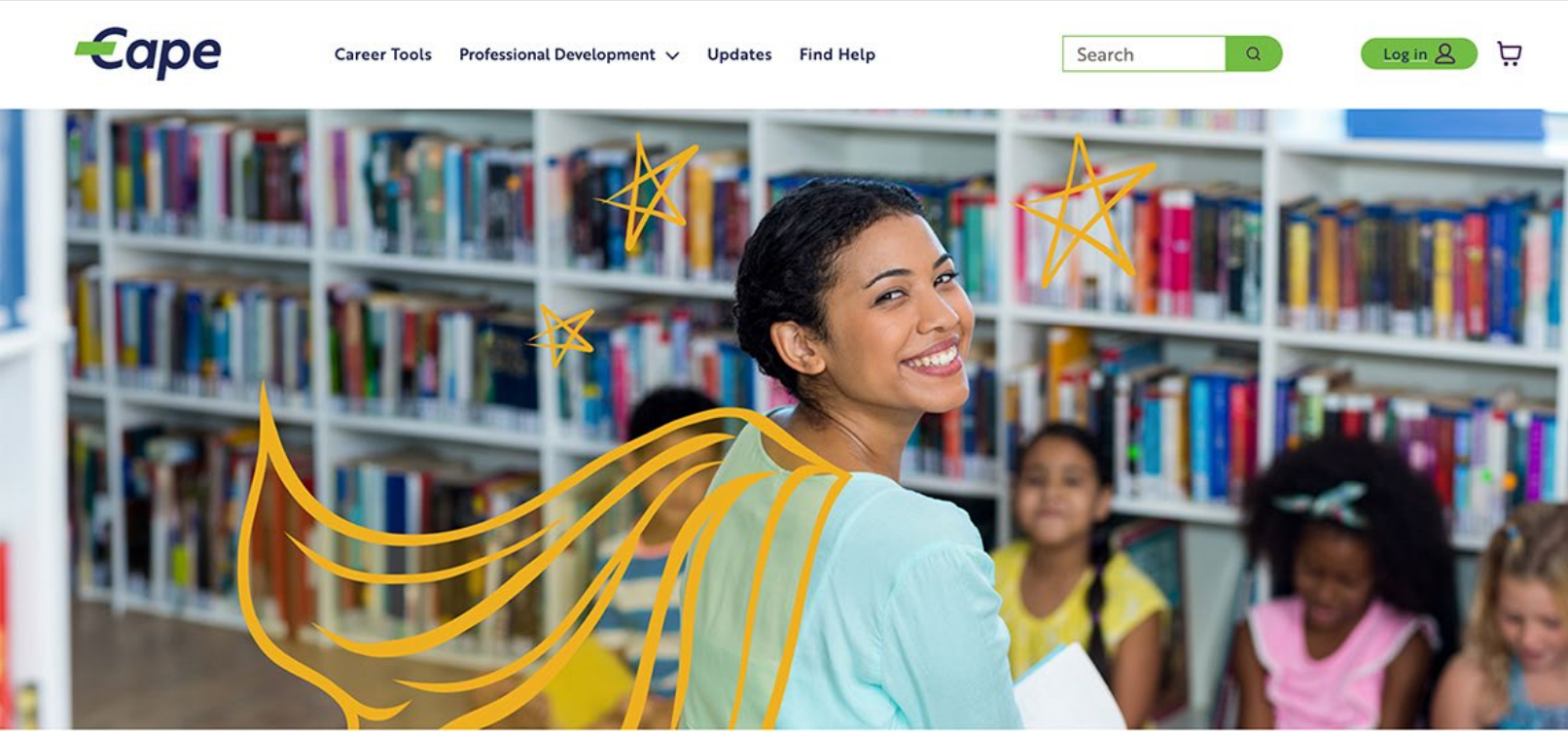
A Sneak Peek!

**All In For
Kansas Kids**



A Sneak Peek!

All In For
Kansas Kids 



Your career and professional empowerment portal
Support for wherever you are on your journey as an early childhood professional.

A Sneak Peek!

180 Items

Filter [Clear Filters](#)

- Categories ^
- Courses
- Events
- Learning Tracks

CDA Settings v

CDA Subject Area v

Core Competency v

Delivery Language v

Delivery Type v

Health and Safety Requirement Type v

Location v

Professional Settings v

Professional Roles v

An Introduction to Adverse Childhood Experiences
Developed By: Kansas Child Care Training
Opportunities
Clock Hours: 2
\$0.00
[View course offerings](#)

Budgets, Projections, and Planning Extension
Developed By: Kansas Child Care Training
Opportunities
Clock Hours: 5
\$5.00
[View course offerings](#)

Advancing the Vision of Inclusion
Developed By: Test Approving Agency
Clock Hours: 3
\$15.00
[View course offerings](#)

Amazing and Engaging Storytimes
Developed By: Test Approving Agency
Clock Hours: 2
\$45.00
[View course offerings](#)

Live Virtual: Following Children's Lead
Developed By: Kansas Child Care Training
Opportunities
Clock Hours: 2
\$0.00
[View course offerings](#)

Sort By: Best Match v

- ✓ Best Match
- Title (A-Z)
- Title (Z-A)
- Clock Hours (Lowest-Highest)
- Clock Hours (Highest-Lowest)
- Price (\$-\$)
- Price (\$-\$-\$)
- Start Date Time (Oldest-Newest)
- Start Date Time (Newest-Oldest)

A Sneak Peek!

Course

An Introduction to Adverse Childhood Experiences

Join us for a LIVE two-hour training on the groundbreaking Adverse Childhood Experiences study that showed the association between childhood trauma and impacts on adult health and well-being. ACEs are common, and having an understanding and awareness of the impact ACEs can have across the lifespan is paramount in helping individuals and communities feel supported so they can heal and thrive. This training provides an introduction to ACEs and brainstorms strategies for preventing and mitigating the impact of adversities and traumas. This virtual training requires you to use a webcam or front-facing camera to create a more interactive and engaging learning experience.

Take this course and earn 2 clock hours towards the Kansas Department of Health and Environment's annual health and safety training requirements.

This course is appropriate for all early care and education professionals.

Course Details

KS Core Competency:	1 - Child Growth and Development (CGD)
CDA Settings:	Preschool
CDA Subject Area:	3 - Supporting children's social and emotional development
Developed By:	Kansas Child Care Training Opportunities
Professional Roles:	
Professional Settings:	
Health and Safety Requirement Type:	None
Health and Safety Training:	

Course Details

Start Date & Time:	Dec 14, 2024, 06:30 PM
End Date & Time:	Dec 14, 2024, 08:30 PM
Registration Deadline:	Nov 28, 2024
Seats Remaining:	2
∨ Offering Details	
Clock Hours:	2.0
Delivery Type:	Live Virtual
Delivery Language:	Spanish
Offered By:	Test Providing Agency

\$10.00

[Add To Cart](#)

A Sneak Peek!



Person Account
Haley Hynek

Primary Phone
Mobile Phone

Email
test@test.com

Years of Experience in Early Childhood
0-2 Years

Details Employment History Technical Assistance More ▾

▽ Individual Professional Details

Account Name Haley Hynek	Email test@test.com
Pronouns She/Her	Mobile Phone (555) 555-5555
Birthdate 11/13/2024	Home Phone
Alternate Name/Nickname ⓘ	Work Phone (555) 555-5555
Previous Last Name ⓘ Doe	Primary Phone Mobile Phone
	Secondary Phone Work Phone

▽ Demographic Details

Race White	Native Language ⓘ English
Hispanic or Latinx Ethnicity <input type="checkbox"/>	Additional Languages ⓘ American Sign Language;Spanish
Gender Identity Female	Preferred Learning Language ⓘ English
	Preferred Course County Finney;Grant;Haskell;Kearny

A Sneak Peek!



* This offering is not in your list of preferred languages -An Introduction to Adverse Childhood Experiences



Haley



[Professional Development](#) > [Courses](#)

The displayed time(s) on this screen are determined by your browser settings.

Course

An Introduction to Adverse Childhood Experiences

Join us for a LIVE two-hour training on the groundbreaking Adverse Childhood Experiences study that showed the association between childhood trauma and impacts on adult health and well-being. ACEs are common, and having an understanding and awareness of the impact ACEs can have across the lifespan is paramount in helping individuals and communities feel supported so they can heal and thrive. This training provides an introduction to ACEs and brainstorms strategies for preventing and mitigating the impact of adversities and traumas. This virtual training requires you to use a webcam or front-facing camera to create a more interactive and engaging learning experience.

Take this course and earn 2 clock hours towards the Kansas Department of Health and Environment's annual health and safety training requirements.

This course is appropriate for all early care and education professionals.

Course Details

Course Details

Start Date & Time:	Dec 14, 2024, 06:30 PM
End Date & Time:	Dec 14, 2024, 08:30 PM
Registration Deadline:	Nov 28, 2024
Seats Remaining:	2

> **Offering Details**

\$10.00

Add To Cart

A Sneak Peek!

All In For
Kansas Kids 



[About](#) [Career Tools](#) [Professional Development](#) [Updates](#) [Find Help](#)

Search PD



Haley



The displayed time(s) on this screen are determined by your browser settings.

Order History

[My Profile](#)

[My Order History](#)

[My Payment Methods](#)

[Log Out](#)

Filter by date:

Start Date

11/7/2023



End Date

11/7/2024



Apply

Reset

Sort items by most recent order 

1 item

Order Number:

**737BE-3DQA7-HPNFV-
NA3BN**

Ordered Date:

11/7/2024, 03:04 PM

Status: Created

Total: \$10.00

[View Details](#)

A Sneak Peek!



Order: 737BE-3DQA7-HPNFV-NA3BN

The displayed time(s) on this screen are determined by your browser settings.

Details

Ordered Date: 11/7/2024, 03:04 PM
Placed By: Haley Hynek
Status: Created
Order Payment Method: Visa - 4242

Totals

Subtotal:	\$10.00
Total:	\$10.00

✓ **Ship To: Haley Hynek, 123 Street, Plymell, KS 67846**

Name: FREE shipping

Subtotal: \$0.00

An Introduction to Adverse Childhood Experiences

Delivery Type: Live Virtual

Course ID: 10049-Off

Subtotal: \$10.00

\$10.00

A Sneak Peek!



Person Accounts > Haley Hynek
Affiliations

New

1 item • Sorted by Start Date • Updated a few seconds ago



	Affiliation Name	Account	Verification Status	Designee	Title	Start Date	End Date	
1	AFF-081291	Kansas Test Account	Self-Reported	<input type="checkbox"/>	Lead Staff/Primary Provider	11/13/2024		

A Sneak Peek!

Details

Employment History

Technical Assistance

More ▾



Assessments Completed (0)



Engagement Sessions (Participant) (0)



Personal Plans (Contact) (0)

A Sneak Peek!



Details

Employment History

Resources

More ▾



Resources Received (0)

Cape

Transitioning to Cape



Transitioning to Cape

- How much is it to join Cape?
- Will there be training or step-by-step instructions to help professionals use the Cape portal?
- Is Cape secure?
- Who can see my data?
- If I move from one facility to another, will all my information still be available in Cape?
- What do I do if something is missing or inaccurate in my profile history?
Who can edit my education, employment, or training information?



Cape

Stay Involved

Follow along at

<https://kccto.org/cape>

All In For Kansas Kids



Child Care Systems
Improvement Team
Initiatives

MELISSA SCHOENBERGER, KDHE



CHILD CARE SYSTEMS IMPROVEMENT TEAM

Melissa Schoenberger, Director of Systems & Field Services
Child Care Licensing
Bureau of Family Health
Kansas Department of Health and Environment
785.207.0623
melissa.schoenberger@ks.gov

CC-SIT



CHILD CARE SYSTEMS IMPROVEMENT TEAM

- Made up of state agency staff, state partners, and community leaders involved in child care policy, licensing, workforce supports, and capacity building
- Reviews and recommends quality improvement efforts for KDHE Child Care Licensing, including on regulations, resources and toolkits, and communications
- 2023 – 2024 Initiatives:
 - Small Center Pilot
 - Roundtable Discussions

CC-SIT



CHILD CARE SYSTEMS IMPROVEMENT TEAM

Small Center Pilot

A Provider's Plan for Rural Kansas Daycare Services:

- Affordability for owner and parents
- Mixed Age Delivery
- Expanded Option for Home Providers
- Licensing Support – Listen and Learn

CC-SIT

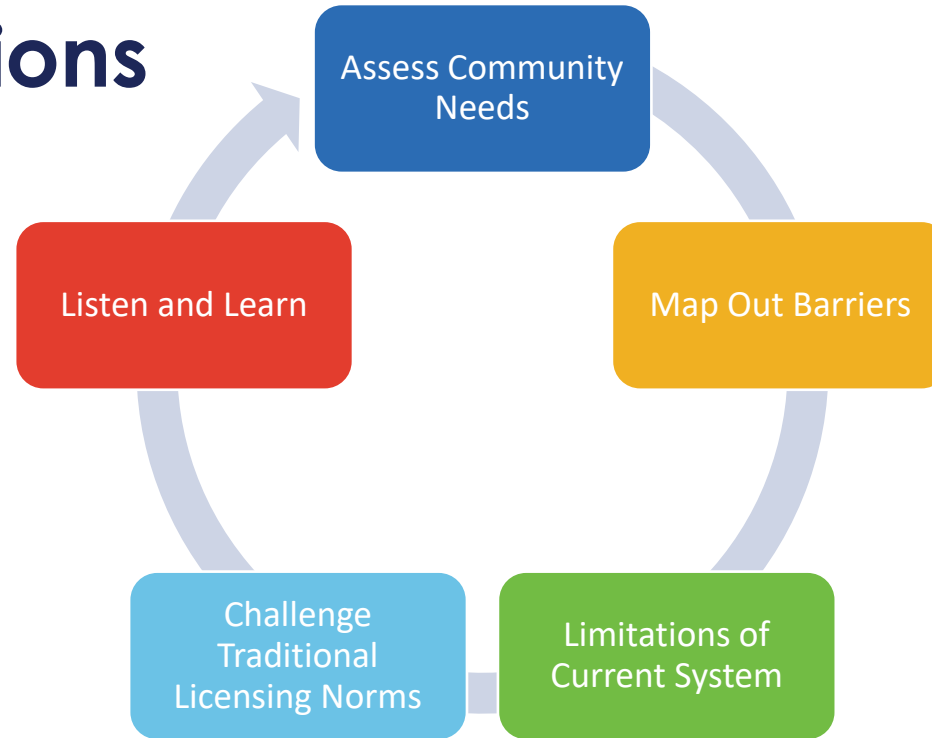




Jannica Null

CHILD CARE SYSTEMS IMPROVEMENT TEAM

Licensing Solutions



CC-SIT







CHILD CARE SYSTEMS IMPROVEMENT TEAM

Roundtable Discussions

- Target Audience:
 - Kansas Childhood Professionals
 - Caregivers with a Young Child
 - Anyone interested in Child Care
- Initial Questions:
 - What is working well related to child care in your community?
 - What are the biggest needs related to child care in your community?
 - How can the state better support child care in your community?

CC-SIT



CHILD CARE SYSTEMS IMPROVEMENT TEAM

- Roundtable Opportunities
 - Abilene 11/12
 - January roundtable – location and date TBD

CC-SIT



All In For Kansas Kids



Early Childhood
Systems Updates



KANSAS EARLY CHILDHOOD CARE & EDUCATION WORKFORCE STUDY: YOUR VOICE COUNTS WEBINAR

Join the survey results webinar to discuss data-driven supports that break down credentialing and education barriers in Early Childhood Care and Education. Turning workforce study insights into your pathway to success!

- Join KCCTO next week on Thursday, November 19th, to engage live with the workforce study results and learn how this data will impact further supports and development of the Early Childhood Care and Education workforce in Kansas.
 - [Option 1: 1-1:45pm](#)
 - [Option 2: 7-7:45pm](#)
- 5,623 Surveys Completed, 39 Focus Groups Held, 100% Representation from Kansas Counties

**Early Childhood
Resources**



FINGERPRINTING SERVICES – TRAINING FOR CHILD CARE PROVIDERS

FREE training, offered by KDHE, on How to Fingerprint for your Child Care staff!

- To better assist Child Care Providers with accessibility to obtain fingerprints, the KDHE Child Care Licensing team is holding an event where you have an opportunity to be trained to conduct fingerprinting.
- FREE 2-hour training for any child care centers or homes, [register here!](#)

Saturday, November 16th

10am-noon

Garnett Public Library

125 West 4th Avenue, Garnett, Kansas

**Professional
Development**



THRIVING CHILDREN RESEARCH SERIES

Learn about new research impacting the field of early childhood education and development during the Thriving Children Research Series, a webinar series hosted by the United Methodist Health Ministry Fund and its partners.

- November 14th, 1-2pm – Leveraging the CCBHC Model to Enhance Childhood Mental Health
- November 19th, 1-2pm – ABC Parent-Coaching Program: Promising Insights
- Plus more to come! [Learn more here!](#)

Funding Opportunity



REMINDERS AND NEXT STEPS

- **2024 Early Childhood Recommendations Panel**
Friday, November 15th – 9 am-11:30 am
- **Children’s Cabinet Meeting**
Friday, December 6th – 9 am-12 pm
- **Early Childhood Systems Building Webinar**
Wednesday, December 11th – 12-1:00 pm

You can find **all** these meetings and more on our Children’s Cabinet YouTube channel!

Stay Connected!





Stay Up to Date



[ALL IN FOR KANSAS KIDS NEWSLETTER](#)



[@KCCTF](#)



[KANSASCHILDRENSCABINET](#)





Thanks!

