

# All In For Kansas Kids



Kansas Early Childhood Meeting  
OCTOBER 7, 2022



# AGENDA

- 10.7.22 Children's Cabinet Overview
- Proposed Regulatory Changes | KDHE
- Current Data Collection Efforts | KU CPPR
- Workforce Updates

August 5, 2022





# Cabinet Meeting

FRIDAY, OCTOBER 7, 2022





# PDG B-5 Renewal Grant Update



# CHILD CARE SYSTEMS IMPROVEMENT TEAM

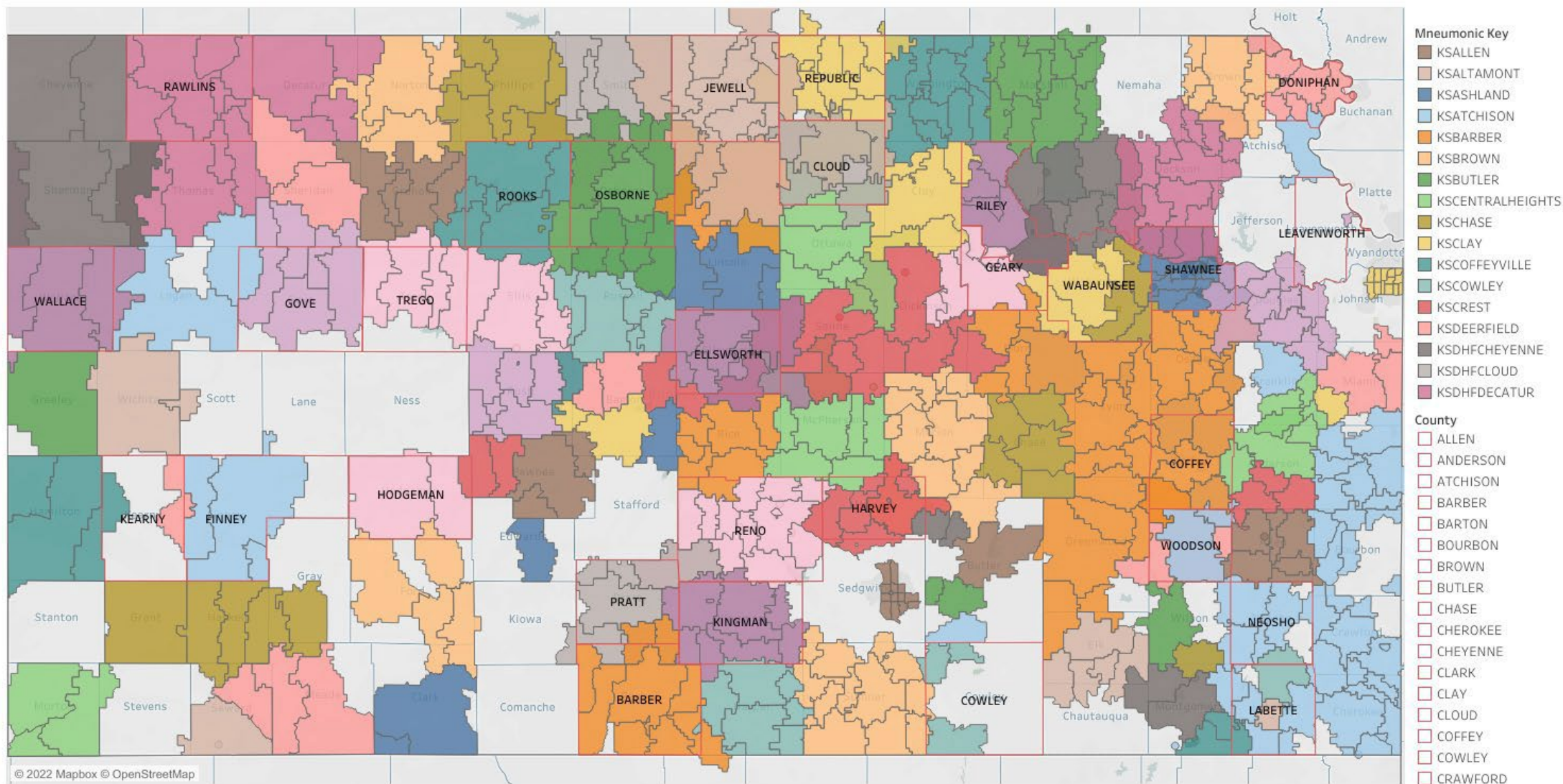
- Advisory group to KDHE that focuses on Child Care Licensing
- Started work again in 2020 after several year break as part of PDG
- Group is comprised of stakeholders from across the state and early childhood care and education system
- In 2021 the group put forth 14 recommendations to:
  - Improve clarity of regulations (e.g. staff qualifications)
  - Increase resources and supports for prospective and current child care providers
  - Increase public awareness

# SYSTEMS IMPROVEMENT TEAM CONTINUED

- Several of these recommendations will be launched later this year:
  - Toolkit to help home-based applicants navigate the licensing process
  - Public awareness campaign focused on the importance of quality licensed child care
  - Go Team
- We are excited about the work to date and look forward to sharing more as we develop and implement future recommendations.  
Thank you!

# DPIL KANSAS COUNTY COVERAGE

USA Coverage Area



# **Proposed Regulation Overview**

## **K.A.R. 28-4-114 Applicant; licensee.**



### **Child Care Licensing Program**

# Purpose of Proposed Changes

- The proposed amendments to K.A.R. 28-4-114 will enhance business activities by addressing the need for child care slots in licensed home facilities.



# Summary of Regulation Changes

- Affirms children 11 years and older related to the provider do not count in total capacity.
- The proposed change updates age on capacity tables from 18 months to 12 months.
- Revises the total license capacity based on ages of children in care and license type; Licensed Day Care Homes with one provider and Licensed Group Day Care Homes with two providers.
- Updates the age category for the maximum number of children at least 5 years but under 11 years of age; this will be changed to allow the oldest unrelated child in care to be 16 years of age
- Proposed table revisions (Note: Table III remained the same, Table IV was eliminated).

# How did we get here?

- Regulation proposals were at the behest of the regulated community to address economic relief for home providers in Kansas.
- Proposed changes provide a balance between the need for safety and marketplace realities.
  - Note: Per KSFM, fire code does not allow for more than 12 unrelated children in a day care home; related children under 11 years of age count in capacity.
- KDHE conducted an internal review with research on the impact for home providers.

# Next Steps:

- Posting in the Kansas Register & Announcement of Public Hearing
  - Public Hearing Scheduled for October 28, 2022 @ 10:00 am in the Curtis State Office Building, 1000 SW Jackson, Room 530, Topeka, KS. Written and verbal comments will be taken at this time.
  - Written comments will continue to be taken until 5:00 pm on October 28, 2022.

**Contact:**

Amber Sellers,  
Kansas Department of Health and Environment  
1000 SW Jackson St., Suite 200  
Topeka, KS 66612-1274  
Email: [Amber.Sellers@ks.gov](mailto:Amber.Sellers@ks.gov)  
Fax: 785-559-4244

- Joint Committee on Rules and Regulation Hearing
- Final Approval & Publication
- Implementation

# Regulation Feedback –

Going beyond K.A.R. 28-114

## Regulation Revision Suggestions Survey

- The Kansas Department of Health and Environment (KDHE)'s Bureau of Family Health (BFH) is home to several regulatory programs. State regulatory programs are designed to protect and preserve the public's health, safety, and well-being. Agencies are given authority through law to establish regulations that describe how laws are to be implemented. Maintaining an effective regulatory program greatly reduces the risk of harm to the people of Kansas and our resources.
- Receiving feedback on program regulations is critical to the regulatory review process and community participation. The survey allows members of regulated communities and the public to offer feedback on KDHE BFH regulations.
- Thank you for sharing your voice as we move forward together to protect the health, safety, and welfare of Kansas families. [Share your feedback today.](#)



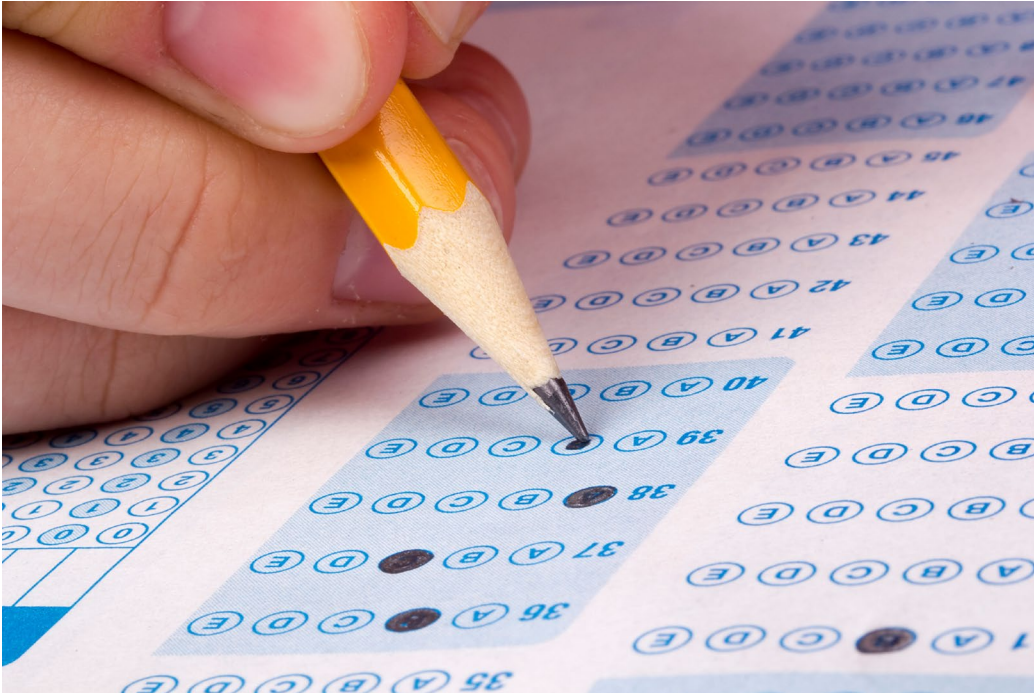
Thank you!

Presented by the Center for Public Partnerships and Research

# Home Visiting & MCH Readiness/Needs Assessments

**KU** THE UNIVERSITY OF  
KANSAS

# Purpose of Assessments



- Document and analyze impacts of the pandemic and other external disruptors on Maternal & Child Health (MCH) and home visiting programs
- Better understand the need for, interest in, and capacity for enhancement/ expansion of services for women and young families in the state

# Methods



1. Both assessments involved extensive review, synthesis and analysis of many existing data sets (programmatic, census, public health, etc.)
2. Both involve surveying of programs, clients, and community members

(We will also be conducting a network analysis of the Local Interagency Coordinating Councils in the fall)

# MIECHV Surveys

## Family\*

For expectant parents and families with children to understand changing nature of needs and gaps in access to services

## Workforce/Agency\*

For home visitors and home visiting agency administrators/supervisors

## Other Agency\*

For other local agencies who serve expectant parents and families with children under 5 survey and/or for people who work or volunteer for non-home visiting agencies, but serve a similar population

\*Surveys in progress

# MCH Survey: Workforce

To collect information on MCH staff's workload, workplace supports, professional goals, and overall well-being

- Parallels MIECHV Workforce/Agency survey (for comparability)
- Shorter (~10 minutes; does not ask home visiting readiness questions included in MIECHV)
- Not yet distributed

# Overall Goals

- Understand impacts of pandemic and other external disruptors on public health programs serving women, infants, children, and youth.
- Inform efforts to enhance, expand program offerings to meet unmet needs.
  - Inform development of recommendations of the Home Visiting Leadership Group to the Children's Cabinet and other policymakers regarding home visiting program investments



# Next Steps

1. Continue data collection (through 10/23 for MIECHV; extended for MCH)
2. Summarize and analyze findings (fall 2022).
3. Talk with other partners as gaps and issues are identified.
4. Share results with key stakeholders (local and state programs, Home Visiting Leadership Team, others)



## How you can help

*Assist with survey completion.  
Contact [ctilden@ku.edu](mailto:ctilden@ku.edu) for links to  
any of the surveys described  
today.*

*Provide feedback on the proposed  
strategies. What do you think?*

# Group Observations

## Stakeholder's Group Ideas and Observations:

- Ensure the assessments include a broad set of social determinants of health including housing, paid leave, affordability/availability of infant care, etc.
- Information at not only a state but local level will be informative to local programs (intent is for information to be available at state and county level)



# *Center for Public Partnerships and Research*

Chris Tilden  
Associate Researcher Senior  
ctilden@ku.edu

**KU** THE UNIVERSITY OF  
KANSAS



# *Thanks!*



# System Updates

HANNAH WHITE

# PUBLIC SERVICE LOAN FORGIVENESS

- Qualifying employers include some Head Start programs, preschools, and child care
- Providers may be eligible now even if they weren't before
- Some borrowers will need to consolidate their federal loans and/or submit PSLF paperwork by October 31, 2022
- Recorded webinar still available

**Workforce**



# FREE WATER LEAD TESTING FOR CHILD CARE PROVIDERS

- Through the Kansas Department of Health & Environment, child care providers can have their facility's water tested for lead for **FREE**.
- You can sign up online or call (800) 674-7961
- To find out more about potential hazards of lead in drinking water and steps to improve the safety and quality of your water, check out the **3Ts Toolkit from the Environmental Protection Agency**.

Workforce



# FAMILY JAM FEST

- Join Child Start at the 2nd Annual **Family Jam Fest**- a family-friendly, mini music festival for families with young children. The Family Jam Fest will be complete with clowns/entertainers, musical acts, food trucks, and booths for local businesses and vendors. Guaranteed fun, while raising awareness on the importance of quality early care and education for all children!
- Admission: \$15/adult (age 13+) \$5/child (age 3-12)



Workforce



# CHILD CARE WORKFORCE APPRECIATION BONUS

- A Partnership between the Kansas Department from Children and Families, Child Care Aware of Kansas and the Kansas Department from Health & Environment has brought one-time appreciation bonus payments of \$750-\$2500 to over 20,000 eligible child care staff (not just teachers and directors!) in Kansas.
- **The application period for school age and drop-in programs is open now!**
- Eligible individuals must apply for the payment and verify information. Check out the application periods table and find more guidance on the Child Care Aware of Kansas website.

**Workforce**

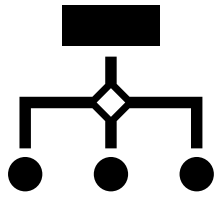




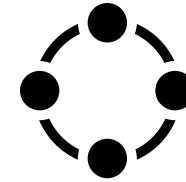
# Workforce Updates

HANNAH WHITE

# Workforce Registry & Career Pathway



- **Completed evaluation and selection process**
- **Made formal recommendation for preferred vendor**
- **Dept. of Administration process**
- **Ongoing work in alignment with career pathway efforts**



- **Finalizing career pathway visual with Orange Sparkle Ball (OSB)**
- **Developing marketing & education materials**
- **Conducting strategy sessions with partners**
- **Finalizing parameters for career pathway framework**

# UPCOMING MEETINGS

- Next Biweekly Webinar: October 19, 12:00 – 1:00pm
  - Register on the Children's Cabinet website
- Recommendations Panel: October 21– 9:00 a.m. via Zoom (third Friday of the month beginning at 9:00 a.m.)
- Kansas Children's Cabinet and Trust Fund:  
December 2, 9 a.m.-12 p.m.  
Early Childhood Group 1:30 – 3 p.m.

All meetings will be held virtually until further notice.

**Stay Connected**

