

All In For Kansas Kids



Strengthening Early Childhood in Kansas

WEBINAR NOVEMBER 16, 2022



WELCOME

- **Relief Funding**
- **Early Childhood Block Grants**
- **General Updates**

Webinar Agenda





Relief Funding Update

KANSAS DEPARTMENT FOR CHILDREN AND FAMILIES



CCDF Pandemic Relief Response

Recommendations Panel 11.18.2022



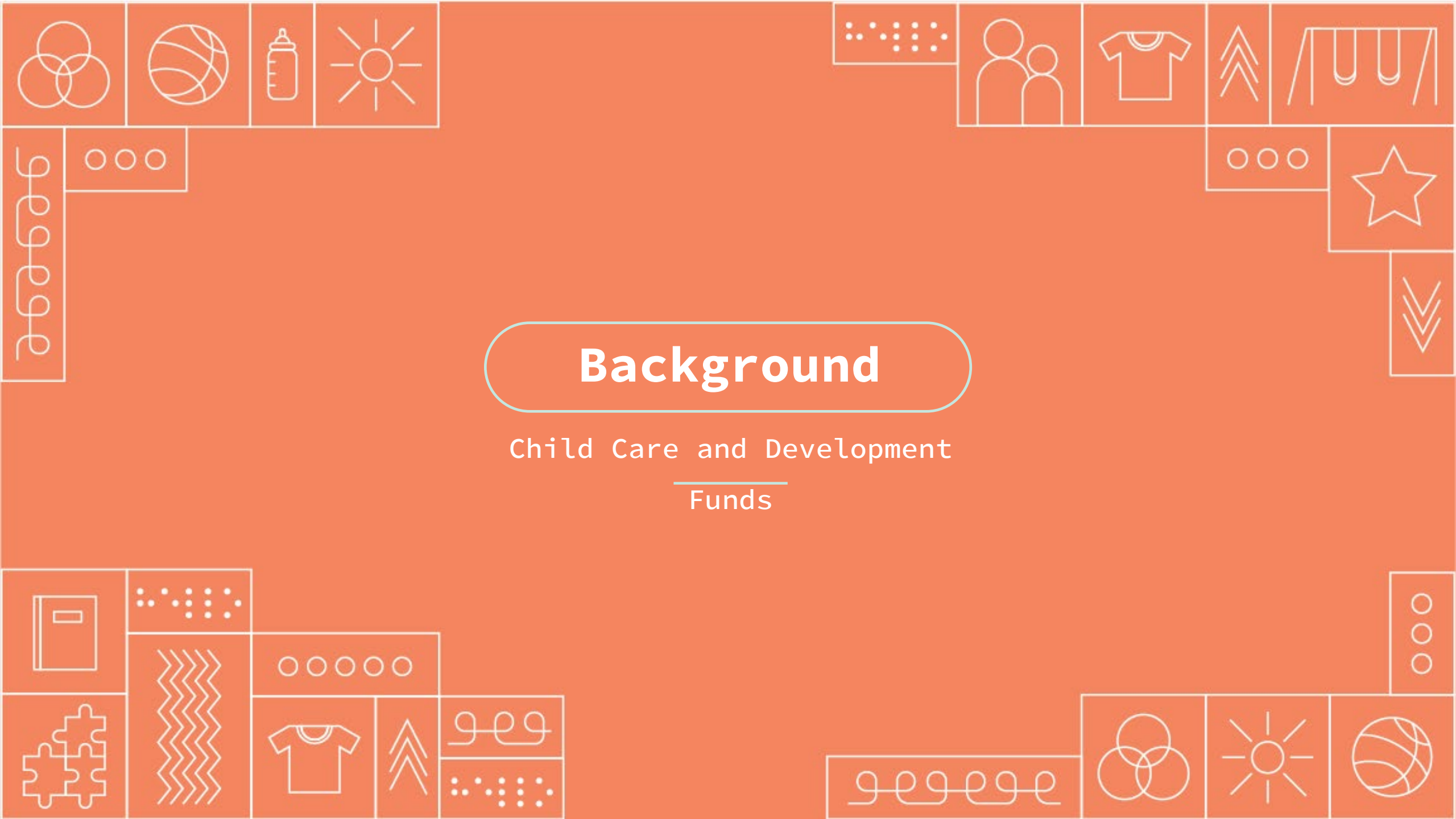
Goals for Today

- Overview of services currently available
- Program highlight: Background checks and licensing fees
- Program highlight: ECE Resources
KS



Background

Child Care and Development
Funds

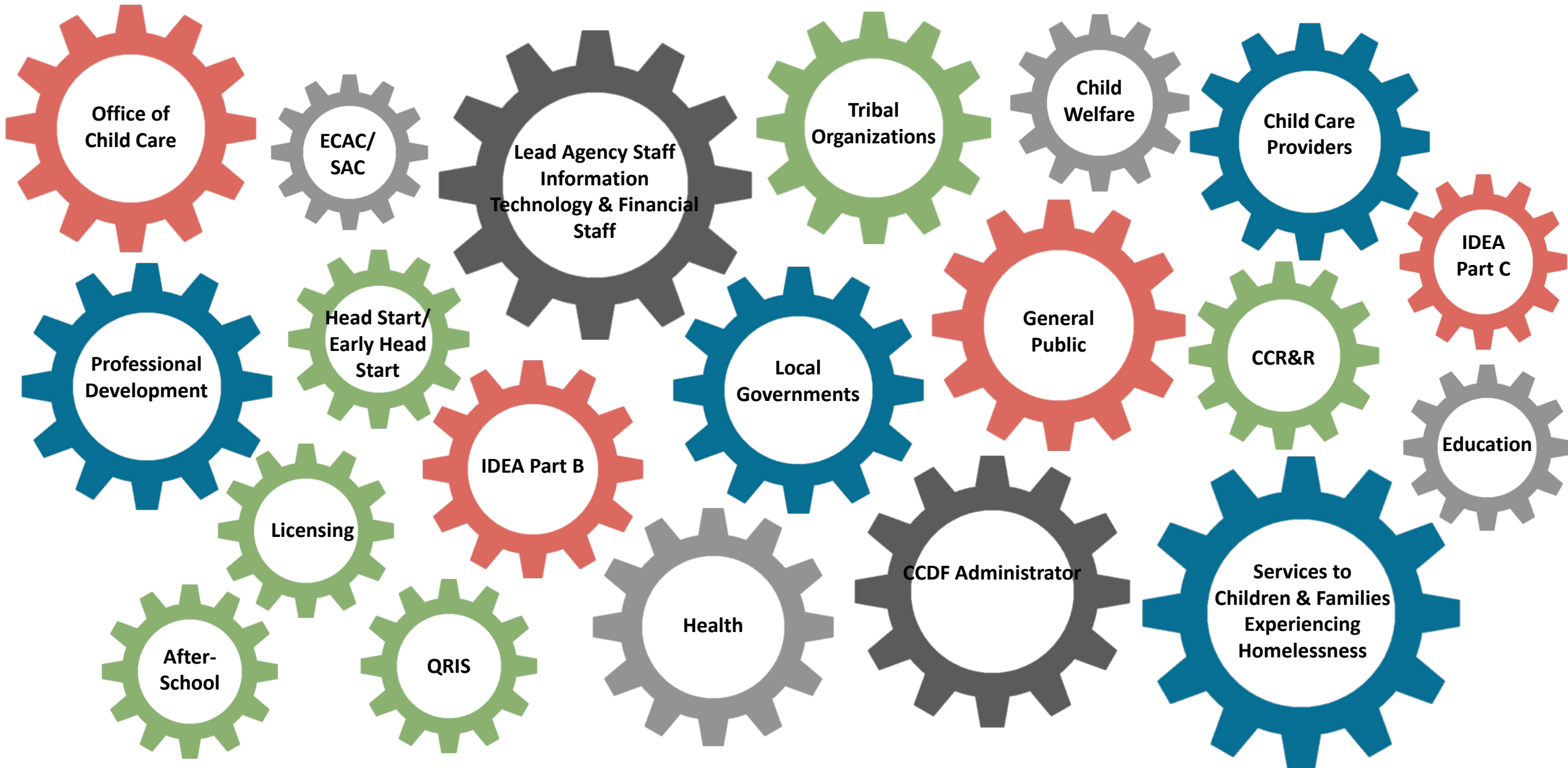


Child Care & Development Fund

Lead Administrator

01. Provide leadership & coordination
02. Promote family engagement & consumer education
03. Provide stable child care financial assistance
04. Ensure equal access to child care
05. Establish standards to ensure health and safety
06. Recruit and retain a qualified workforce
07. Support continuous quality improvement
08. Ensure grantee accountability

CCDF Administrator Relationships and Responsibilities



Governor

Kansas Department for
Children & Families

Kansas Children's
Cabinet and Trust Fund

Kansas Department of
Education

Kansas Department of
Health & Environment

Resource & Referral
Network

Child Care Assistance

Kansas Enrichment
Network

Workforce Development

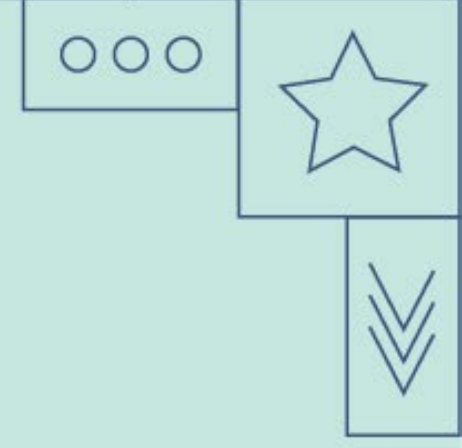
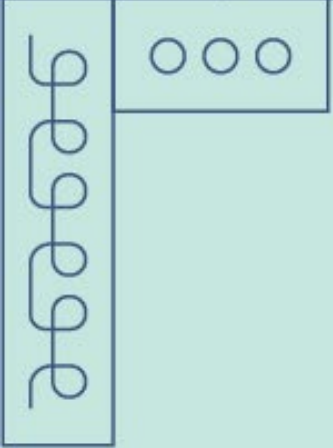
Links to Quality

Kansas Quality
Network

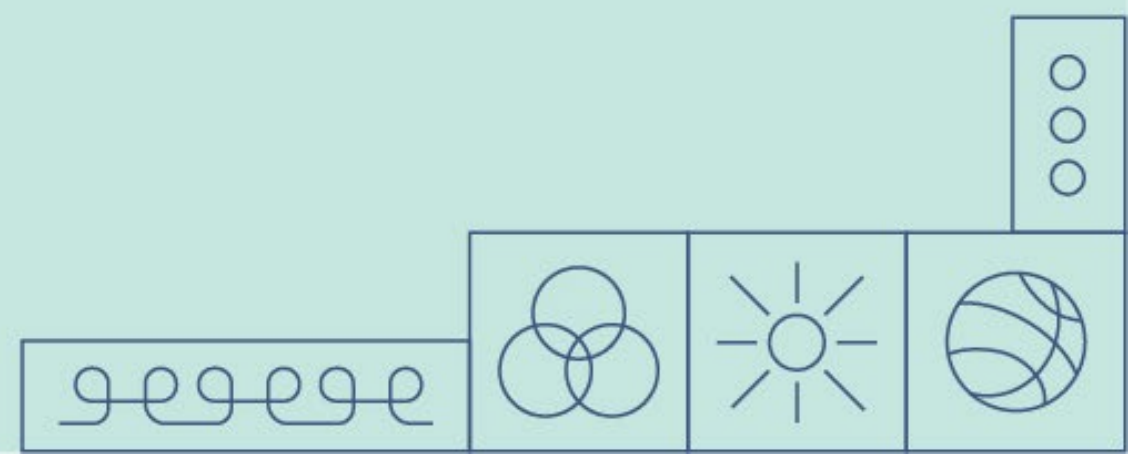
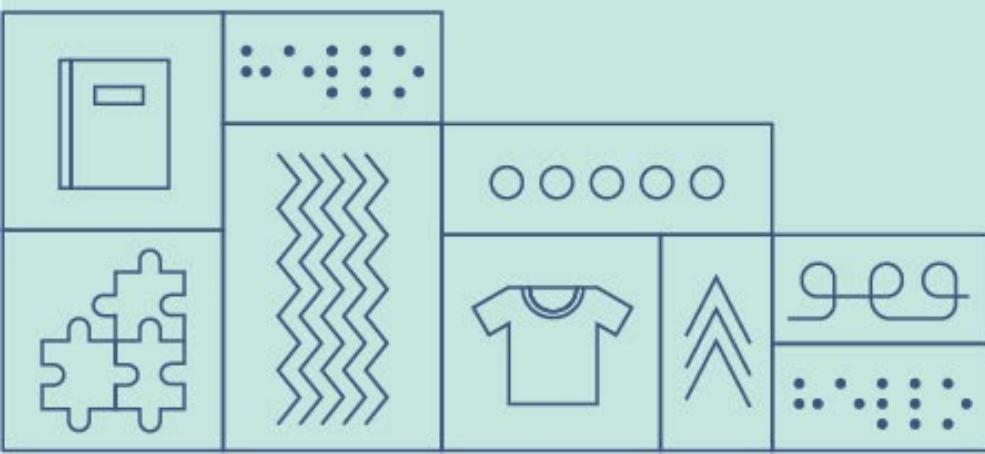
Kansas Child Care
Licensing

Kansas Early Head Start
Child Care Partnerships

Infant-Toddler Specialist
Network



Relief Funding





Direct Provider Supports

HERO Relief Provider Funding:

- 8,093 child care programs
- \$11,371,411

Sustainability Grants – Round 1:

- 3,171 child care programs
- \$43,590,000

Sustainability Grants – Round 2:

- 3,522 child care programs
- \$47,560,000





Direct Provider Supports Addtl.

Sustainability Grants – Round 3:

Application Closes 11/30

3,839 child care programs have applied since March

- \$160,000,000+ total available over 14 months

Child Care Appreciation Bonus:

Application Closes 12/10

10,497 individuals have applied since July 18th





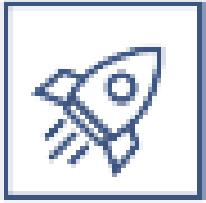
Sustainability Grants

Currently Available

**Applications will be accepted on a rolling basis until
11/30!**

Funding amounts available for the final five months:

- Family/Group child care homes: **\$750 per month**
- Other child care programs (centers, preschools, head start, school age programs, and drop-in care):
 - Licensed capacity 24 or less children: **\$1,475 per mo.**
 - Licensed capacity between 25-99 children: **\$3,800 per mo.**
 - Licensed capacity 100+ children: **\$7,400 per mo.**



Start-up Supports

Child Care Health Consultant Network:

- Tiered supports *available now* through partnership with Child Care Aware of Kansas & Kansas Department of Health & Environment (KDHE)

Background Checks & Licensing Fees:

- Available through September 2024

Community Partnerships:

- Local and regional engagement to enable communities to plan for and address child care needs
- *Community grants now available!*





Quality Improvement Support

Child Care Quality Improvement & Support:

- In partnership with Child Care Aware of KS
- Links to Quality Implementation – Voluntary Quality Improvement System
- Shared Services Networks – Opportunity to leverage services and needed services

ECE Resources KS: Online catalogue of templates and resources to support child care providers and programs

- Connection to telehealth & teletherapy services





SIMPLE WAYS TO WORK ON YOUR WELLNESS

Struggling with finding time to focus on mental wellness? These resources provide effective ways for you and your team to navigate busier times with less stress and more peace and happiness.

[VIEW RESOURCES](#)


Featured Tools & Resources



ENGAGING FAMILIES

Building Strong Relationships

Communication is a great start to establishing and maintaining a strong relationship between ECE providers and the families they serve.

The resources and tools in this section provide guidance and knowledge to educate staff and families about child development, general health concerns, nutrition and fitness, and much more.

IN THIS SECTION

[Engaging Families](#)
[Admin Tools >](#)
[Child Development >](#)
[Child Tax Credit](#)
[Education >](#)
[Environment >](#)
[General Health >](#)
[Nutrition & Fitness >](#)
[Safety >](#)
[Social & Emotional >](#)

CHILD TAX CREDIT

SPREAD THE WORD

Important changes to the Child Tax Credit will help many families get advance payments of the Child Tax Credit starting in the summer of 2021.

Starting July 15 and continuing through December 2021, the new Child Tax Credit in the American Rescue Plan (ARP) Act provides monthly benefits of \$250 per child between ages 6-17 and \$300 per child under age 6. The IRS will pay half the total credit amount in advance monthly payments. Families will claim the other half when they file their 2021 income tax return. The IRS will make the first advance payment on July 15, 2021 and continue monthly payments for the entire 2021 year.

WHAT YOU NEED TO KNOW:

- Most families (nearly 90% of children in the United States) will automatically receive monthly payments without having to take any action.
- Families who did not file taxes last year still can access the benefit (see below).

WHAT YOU CAN DO:

- Direct families to Child Tax Credit website to learn more:
 - [ChildTaxCredit.gov](#)
- Share the flyer and handout resources ASAP with every family enrolled in your program.

RESOURCES TO HELP SPREAD THE WORD:

- Share the facts and resources on social media using the [Child Tax Credit Toolkit](#)
- Share the resources below with families and staff to be sure they know about the opportunity.
 - [WhiteHouse.gov Child Care Tax Credits Flyer](#)



Workforce Supports

Increased Professional Development & Scholarships:

- Includes In-Service Training, Higher Education, Child Development Associate Credential
- *Available* through Kansas Child Care Training Opportunities

Mental Health Technical Assistance:

- Available through Infant-Toddler Specialist Network (ITSN)
- Fostering a strong understanding of social-emotional development of young children





Workforce Supports Cont.

Supporting Children with Disabilities Technical Assistance:

- Available through Infant-Toddler Specialist Network (ITSN)
- Focused on building collaboration for supporting and understanding inclusive environments

Workforce Registry: *Coming Soon!*





Family Supports

HERO Relief Program:

- Raised income limit to 250% of the Federal Poverty Level
- Removed family share deduction for essential workers

Family Needs & Preference Study:

- In partnership with Wichita State University
- Help us understand the drivers behind the low participation in DCF child care assistance
- Survey of families and child care providers





General Subsidy Changes

Currently Available

- Raised income limit from 185% to 250% of the Federal Poverty Level
- Child care benefits determined using blocks of time based on the calculated hours of care needed per month

- Removed the family share deduction for all families with income at or below 100% and reduced it for all other families
- Increased the maximum rates to the 85th percentile for all age groupings



General Systems Improvement & Support

Marketing & Outreach:

- Mammoth Creative Co.
- Sharing information related to child care generally in Kansas and relief funded initiatives

Backbone Support:

- Provide administrative and strategic support to the DCF Pandemic Relief Program Team

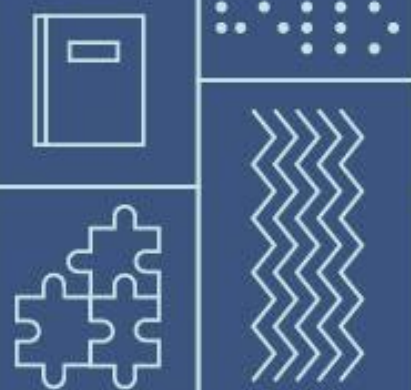




Thank you!

Stay connected

www.childcareinkansas.com





Early Childhood Block Grants

KANSAS CHILDREN'S CABINET AND TRUST FUND

ECBG PURPOSE

- To provide early childhood services for Kansas children and families ages birth to kindergarten entry, as well as services for prenatal and family supports.



ECBG PROGRAM REQUIREMENTS

- Intended to provide supplemental funding to fill gaps, programs must evidence they are investing in other funding sources and community support
- Programs that provide direct services to at-risk children aged birth to five
- Eligible applicants include 501c(3), county and city governments, and Unified School Districts.



TIPS FOR SUCCESS

- Successful applicants will explain how their service approach
 - Supports the areas of impact
 - Contributes to the indicators of success
 - Builds community partnerships to support enhanced quality, accessibility, and affordability of programs for at-risk children and families
 - Utilizes common measurement tools to document progress towards KCCTF's long term goals



STRONG PROPOSALS

1. Plans based on community needs and data aligned with the goals of the strategic plan
2. A focus on outcomes
3. Public-private partnerships
4. A commitment to evidence-based, data-driven practices
5. Increase the availability of high-quality child care for infants and toddlers experiencing factors that may make them at-risk



ECBG SFY 2023-2024

Timeline	Date(s)
Release of RFP and Kansas CommonApp Portal Opens	November 4, 2022
Kansas CommonApp portal webinar	November 4, 2022
Written questions from applicants due	December 9, 2022
Applications Due	December 16, 2022 (by 5:00 p.m.)
Children's Cabinet considers funding recommendations	April 14, 2023
Grantee Notification	Following the April Cabinet Meeting (pending legislative budget approval)
Grant Year	July 1, 2023 – June 30, 2024





General Updates

NOVEMBER IS NATIONAL FAMILY LITERACY MONTH

- The Kansas Children's Cabinet is not only invested in early literacy, but also supporting family connections. The magic of Dolly Parton's Imagination Library is open to any child from birth to their 5th birthday where there is a local community program. Children receive free, age-appropriate books mailed directly to their home every month.
- On the Children's Cabinet webpage for Dolly Parton's Imagination Library now features age-specific reading tips for making story time fun while also nurturing their early stages of development! Additionally, you can check out the **Dolly Parton's Imagination Library** website, which includes resources like coloring and activity sheets to accompany different Imagination Library books

Workforce



MOBILE FINGERPRINTING UNIT

- Did you know? In November 2021, KDHE and the Department for Children and Families (DCF) launched a small pilot project in partnership with the KBI, utilizing LiveScan/digital fingerprinting machines for child care affiliates/employees. The pilot significantly reduced wait times for fingerprint results.
- NOW AVAILABLE, DCF Mobile Fingerprinting Unit!
 - **We'll come to you!** DCF staff will fingerprint at your location, using our Livescan equipment. Processing times are cut in half versus Ink Printing! WHERE TO? Contact us for an appointment if you are within 1 hour of: Wichita, Topeka, Manhattan, Hutchinson
- By appointment only, min of 10 people per day, max of 60 people per day

Workforce



CHILD CARE WORKFORCE APPRECIATION BONUS

- A Partnership between the Kansas Department from Children and Families, Child Care Aware of Kansas and the Kansas Department from Health & Environment has brought one-time appreciation bonus payments of \$750-\$2500 to over 20,000 eligible child care staff (not just teachers and directors!) in Kansas.
- **The application period for relative care provider is open!**
- Eligible individuals must apply for the payment and verify information. Check out the application periods table and find more guidance on the Child Care Aware of Kansas website.

Workforce



SAFETY WEBINAR SERIES

- Join the Institute for Childhood Preparedness and Kansas Head Start Association for a series of four live webinar trainings on emergency preparedness and safety! All sessions are approved for KDHE clock hours.
- November 29: De-Escalation
- December 14: Home Visit Safety
- January 25: Emergency Preparedness/Crisis Communications
 - \$65 each webinar (\$55 KHSA Members/Programs)
\$245 for all 4 (\$220 KHSA Members/Programs)

Workforce



EARLY CHILDHOOD EVENTS

- **KCSL – Standards of Quality for Family Strengthening & Support**
 - Join the Kansas Children's Service League and the Kansas Family Support Network, November 29-30, 2022
- **KPATA**
 - Announcing a new, monthly training series for teachers and educators. Free and available to any current KPATA member.
 - November 17 – ACEs Training with KCSL
 - December 15 – Positive Supports Impact on Family Well-Being

Workforce



WORKFORCE SURVEY

- Survey is open from October 17- November 20, 2022
- WFDAG conducts an annual statewide needs assessment, informs professional development for child care providers
- If you work in an early childhood setting providing care to children aged 0-12 you are eligible
- Responses are anonymous (information for drawing)
- English and Spanish available

Workforce





Goal 6 | Strategic Plan Updates

STRATEGY 6.1

- 6.1.1 Develop recommendations to increase compensation and benefits for early childhood care and education professionals.
- 6.1.2 Develop and implement a comprehensive career pathway to facilitate career entrance and advancement.
- 6.1.3 Expand opportunities for early childhood care and education career exploration at the high school level, including effective promotion and understanding of all positions and leadership opportunities.

Expand the number of professionals entering and remaining in the workforce.



STRATEGY 6.1 CONTINUED

- Launch a workforce registry for early childhood care and education professionals to access, track, and guide career advancement.
- Document and address recruitment and retention challenges.
- Engage pre-service faculty and in-service professionals in identifying challenges for training program development and expansion. Make adjustments to address demands in workforce recruitment, preparation, and retention.

Expand the number of professionals entering and remaining in the workforce.



- Establish a comprehensive professional development system that includes diverse representation from across the early childhood care and education workforce.
- Revise, as appropriate, and align core competencies and the development of credentials across all early childhood care and education positions, drawing from national evidence-based practices and standards. Ensure they include knowledge and performance competencies that prepare professionals to support all children at all levels of ability.

Implement a high-quality, competency-based professional development system



- Engage two- and four-year institutions of higher education in the development of articulation agreements supporting transfer of early childhood major courses to create additional degree advancement opportunities for early childhood care and education professionals.
- Coordinate the activities of professional development contracts across state agencies to realize efficiencies, ensure effectiveness, and identify key investment areas.

Implement a high-quality, competency-based professional development system



- Select, promote, and provide training, mentorship, coaching, and support to integrate best and/or evidence-based practices into service delivery. Ensure key topics like trauma-informed care, early childhood mental health, early literacy, and cultural responsiveness are addressed.
- Identify gaps in awareness of, access to, and availability of professional development opportunities, including evidence-based practices, early childhood credentials and credentialing opportunities, and quality initiatives and programs. Develop plans to effectively and efficiently address those gaps for all early childhood care and education roles.

Implement a high-quality, competency-based professional development system



- Identify strategies to create and promote joint participation in professional development activities across settings and roles, including opportunities for school-based and non-school-based early childhood care and education professionals.

Implement a high-quality, competency-based professional development system



STRATEGY 6.3

- Establish financial incentives to support the recruitment, retention, and advancement of a diverse workforce.
- Support culturally, linguistically, and diverse-ability-appropriate materials in **professional development** opportunities, facilities, playgrounds, and other learning spaces.
- Implement professional development programs that increase workplace diversity, equity, and inclusion practices to ensure early childhood environments are responsive to and supportive of a diverse workforce.

Support diversity, equity, and inclusion in the early childhood care and education workforce



REMINDERS AND NEXT STEPS

- Early Childhood Recommendations Panel meeting November 18, 9-11:00 am
- Next Bi-weekly webinars, November 30, 12 – 1:00pm
 - Let us know what topics you're interested in, or if you have information to share in the webinars or weekly emails.
- Children's Cabinet and Early Childhood Group Meeting, (December 2)
 - Register for Stakeholder Group meeting at the Kansas Children's Cabinet website: [Register Here!](#)

Early Childhood System





Thanks!

