

All In For Kansas Kids



Kansas Early Childhood
Stakeholder Group Meeting

WEBINAR DECEMBER 3, 2021



WELCOME

- **General Updates**
- **Cover Kansas & Thrive Allen County – Marketplace Insurance for Early Childhood Providers**
- **Wrap Up & Closing**

Agenda



EARLY CHILDHOOD RECOMMENDATIONS PANEL

- November meeting held on 11/19 – Special presentation from guest Dr. Dan Wuori, The Hunt Institute, about the potential impact of the Build Back Better Act on the Kansas early childhood system, children, and families.
- A recording of the meeting, including the presentation and Panel discussion can be found here:
<https://www.youtube.com/watch?v=Nc6fgdTba3s>.
- Email ideas to Debbie Deere: ddeere@ksde.org

Systems Alignment



BUILD BACK BETTER ACT – TOWN HALL MEETING

- The Child Care Providers Coalition of Kansas, Kansas Association for the Education of Young Children, and Kansas Action for Children hosted a town hall meeting on 11/18.
- A link to view the recording of this meeting is available:
https://www.youtube.com/watch?app=desktop&fbclid=IwAR2Enati4XrPhLhEX1sc2Asj23dzAxM3_VdWEdh7G1DrpS3d87c82XLyD_g&v=muR2ZtCXn4c&feature=youtu.be#dialog
- KAEYC will spotlight the town hall in their December quarterly newsletter.

Systems Collaboration



EARLY CHILDHOOD BLOCK GRANTS + KANSAS PRESCHOOL PILOT GRANTS

- Applications accepted through December 20
- Submit through the Kansas CommonApp platform:
<https://commonapp.grantplatform.com/>
- Kansas State Department of Education and Kansas Children's Cabinet and Trust Fund are partners in offering this grant opportunity

Funding Opportunity



ASQ TRAINING OPPORTUNITIES

ASQ-3™ focuses on these areas of development: communication, gross motor, fine motor, problem solving, and personal-social.

ASQ- 3

Tuesday,
12/14,
9am-
12pm

**ASQ:SE-
2™**

Thursday,
12/16,
9am-
12pm

ASQ:SE-2™ focuses on these social-emotional development domains: self-regulation, compliance, communication, adaptive behavior, autonomy, affect, and interaction with people.

Visit the TASN website for registration information.

**Professional
Development**



FREE ASQ ONLINE SUBSCRIPTION

- Available for any organization that is providing or would like to start providing developmental screenings
- To sign up or for more information, contact your local community Part C Account Administrator:
<https://bit.ly/ASQContacts>
- Questions: Erica Figueroa, erica.l.figueroa34@ku.edu

ASQ



KINDERGARTEN IN KANSAS BOOKLET

- Available for distribution – online resource link in chat
- Information about Kindergarten readiness, kindergarten transition, checklists, and more for families and caregivers.
- Copies available in multiple languages
- Copies to share can be found at this link:

https://docs.google.com/forms/d/e/1FAIpQLSf9BH7morL8ZY7kFcmFg_n80OUMypfY1yM8q6VfBAAXGJwjbQ/viewform

**KINDERGARTEN
READINESS**



FAMILY CONNECT MODULES

- Greenbush's [Family Connect Modules](#) is a FREE series of five one-hour interactive modules connecting families to resources & services to promote the healthy development of children ages 0-5.
- [Module 1: Families as Foundation](#)
- [Module 2: Families as Communicators](#)
- [Module 3: Families as Advocates](#)
- [Module 4: Families as Partners](#)
- [Module 5: Families as Community Members](#)
- Questions can be directed to barbara.gannaway@greenbush.org
- Register at: <https://drive.google.com/file/d/1djWA2iW8R0IHNNmdze9MUROA-ml76duP/view>

Parent Training
Resource



REAL WORLD PARENTING SERIES

- Family Service & Guidance Center offers presentations designed to make raising children and teens less stressful
- For more information, FSGC website:
<https://www.fsgctopeka.com/events/parenting>
- A Parent's Survival Guide: The Middle School Years
- Thursday, December 16, 6:30-7:30 pm

**Parent Training
Resource**





Marketplace Insurance for Early Childhood Providers

KATE GRAMLICH, RHONDA CULP, LEESE REGEHR

Marketplace Insurance for Early Childhood Providers



Learning Agenda



- What is the Marketplace?
- Who/what are Navigators?
- How to meet with a Navigator and how to prep for an appointment
- Financial assistance
- How the American Rescue Plan has impacted the Marketplace
- Contact information for Kansas navigators
- Questions/Discussion

What is the Health Insurance Marketplace?

Also known as the Federally Facilitated Exchange, the Affordable Care Act, Obamacare, etc...

- 1 A service that helps people shop for and enroll in health insurance, operated by the federal government
- 2 All plans must cover: essential health benefits, pre-existing conditions, and preventative services
- 3 Goal is to make health insurance available to more people at lower costs



When is Open Enrollment?

NOVEMBER 1, 2021 ... JANUARY 15, 2022

Must enroll before Dec 15th to receive coverage starting Jan 1st, 2022.

Enrolling between Dec 16th-Jan 15th will have a Feb 1st start date

Special Enrollment Periods for certain qualifying life events



What are Navigators?

- 1 Trained and certified professionals available to assist consumers with their Marketplace application, answer questions, and define terms
- 2 Navigator assistance is free to consumers
- 3 Unbiased and not connected to any insurance provider; can not give advice - only options
- 4 Located across the state of Kansas and also available over the phone or video call
- 5 Available during Open Enrollment, as well as year-round for Special Enrollment Periods



How to meet with a Navigator

(and how to prep for an appointment)



- 1 In person at a Cover Kansas or Thrive Allen County Navigator location
(map found at [GetCoveredKansas.org](https://www.getcoveredkansas.org))
- 2 Over a protected Zoom call with a Virtual Navigator
(appointments made at [GetCoveredKansas.org](https://www.getcoveredkansas.org))
- 3 Via phone call to [800 826 8375](tel:8008268375)

How to meet with a Navigator (and how to prep for an appointment)



- 1 Names, birthdays, and Social Security numbers for household members
- 2 Your projected household income for 2022, with ideas about your budget for insurance and medical costs
- 3 Tax information, such as filing status and number of dependents
- 4 Immigration documentation and supporting ID numbers for anyone seeking coverage
- 5 Access to an email address (Navigators can help you create one if you do not already have one)
- 6 A list of any doctors, hospitals, and prescriptions your household already uses, in order to check network coverage (if applicable)

Financial Assistance

To qualify for financial assistance, you must meet these qualifications:

- You can't get health insurance that covers your basic needs through any of the following:
 - Your job (or a family member's)
 - Medicaid/Kancare
 - Medicare
 - CHIP
 - The VA.

and

- The amount of money your family expects to make in the year you apply for assistance falls within the amounts shown in the following table.

Financial Assistance

Table 1: Federal Poverty Guidelines for 2022 Coverage Year

Number in Household	100% FPL	138% FPL	150% FPL	200% FPL	250% FPL	300% FPL	400% FPL
1	\$12,880	\$17,774	\$19,320	\$25,760	\$32,200	\$38,640	\$51,520
2	\$17,420	\$24,039	\$26,130	\$34,840	\$43,550	\$52,260	\$69,680
3	\$21,960	\$30,304	\$32,940	\$43,920	\$54,900	\$65,880	\$87,840
4	\$26,500	\$36,570	\$39,750	\$53,000	\$66,250	\$79,500	\$106,000
5	\$31,040	\$42,835	\$46,560	\$62,080	\$77,600	\$93,120	\$124,160

NOTE: Tax credit eligibility for the 2022 coverage year is based on 2021 federal poverty guidelines. For households with more than 5 people, add \$4,540 for each additional person. Somewhat higher guidelines are established for Alaska and Hawaii.

SOURCE: For more information see ASPE's "Poverty Guidelines" [webpage](#).

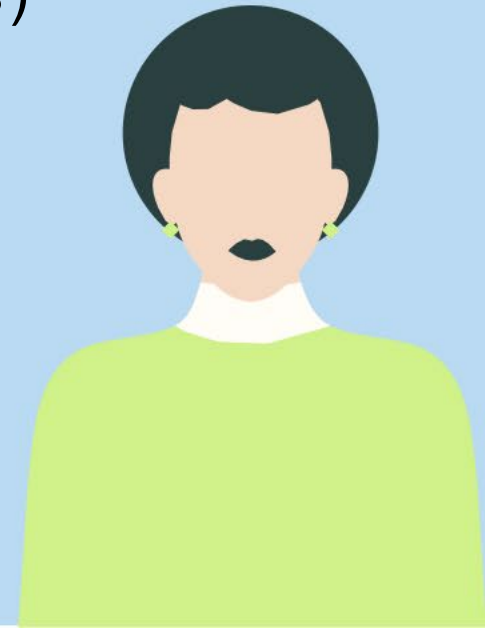
Estimator tool: healthcare.gov/lower-costs

How the American Rescue Plan impacts the Marketplace

Enhanced premium tax credits for all income brackets for coverage through Dec. 31, 2022.

Many consumers with household incomes from 100% to 150% FPL will have \$0 premium plans (after tax credits) available to choose from.

Extended eligibility for tax credits for people with income over 400% FPL (\$51,520 for a single person in 2022, \$87,840 for family of 3).





Questions?

Comments?

Contact Info

If you have questions about anything in this presentation,
please feel welcomed to contact the following at any time:



Kate Gramlich
Cover Kansas Project Specialist
kgramlich@communitycareks.org



Lisse Regehr
CEO, Thrive Allen County
lisse@thriveallencounty.org

Rhonda Culp
Project Lead/Navigator
rhonda@thriveallencounty.org

To connect with a certified Navigator:

GetCoveredKansas.org

800-826-8375

Insurance should be for everyone.

Certified Navigators are here to help you enroll in the Health Insurance Marketplace. Get free, unbiased assistance:
[GetCoveredKansas.org](https://www.getcoveredkansas.org) -or- [ThriveAllenCounty.org](https://www.thriveallencounty.org)

Open Enrollment lasts until Jan. 15, 2022.



REMINDERS AND NEXT STEPS

- Early Childhood Recommendations Panel Meeting (12/17)
 - Registration and YouTube Viewing Information on the Cabinet website.
- Next Biweekly Webinar – Wednesday, December 15
 - Let us know what topics you're interested in, or if you have information to share in the webinars or weekly emails.
- Cabinet and Stakeholder Group Meeting – February 4, 2022
- Share feedback! - <https://kschildrenscabinet.org/share/>

Early Childhood System



<https://kschildrenscabinet.org>



Thank you!

