

# All In For Kansas Kids



## Early Childhood Recommendations Panel

**MEETING** SEPTEMBER 17, 2021





# WELCOME

**Thank you** for serving Kansas children, their families, and our state's early childhood care and education professionals!

This is a remote meeting.

- Today's meeting materials are posted on the [Panel Meetings webpage](#) on the Children's Cabinet site.
- Panel members will clearly identify themselves when they begin speaking.
- Panel members can use the "raise hand" feature to show they are ready to share.



# TODAY'S AGENDA – PART 1

- Welcome, approval of September 2021 agenda and August 2021 meeting minutes
- Kansans' Open Forum
- 1-800-CHILDREN feedback session
- Links 2 Quality overview / feedback session





# TODAY'S AGENDA – PART 2

- *10-minute break at 9:55 a.m.*
- Work Group breakout sessions
- Work Group reports
- Future Agenda Items / Bright Spots / Upcoming Meetings
- Adjourn



# ACTION ITEMS

*Panel members - please clearly identify yourself when you begin speaking to make and second a motion.*

- Approval of Agenda
- Approval of August 17, 2021 meeting minutes



# KANSANS' OPEN FORUM

*Kansans may email Debbie Deere (ddeere@ksde.org) by 5:00 p.m. on Thursday, September 16 to share written comments or to sign up to share verbal comments with the Panel during this portion of the meeting.*



# All In For Kansas Kids



1-800-CHILDREN feedback session  
**AMANDA PETERSEN**



# All In For Kansas Kids



Links To Quality overview /  
feedback session

**MEGAN SMITH, DEPARTMENT FOR CHILDREN &  
FAMILIES**



Links to Quality



Recommendations Panel



# Objectives

---

- Links to Quality Background
- Link Overview
- Current Link Development Needs
  - Health & Safety Workgroup

# What is Links to Quality?

---

Links to Quality is a child care quality rating and improvement system (QRIS) created with the support of early childhood organizations and providers across the state and led by the Kansas Department for Children and Families (DCF).

A QRIS defines quality and provides a framework for helping programs and providers meet that standard.

# Links to Quality

## Quality Recognition and Improvement System

Comparison of Traditional QRIS Model and L2Q		
	TRADITIONAL QRIS	LINKS TO QUALITY
Uses Quality Indicators	✓	✓
Uses Classroom Observations	✓	✗
Gives Qualitative Feedback	✗	✓
Strengths-based Approach	✗	✓
Programs Receive Rating	✓	✗
Provider Recognition Focus	✗	✓

We've  
chosen to  
focus on  
***recognition***,  
rather than  
rating quality.



# Vision & Mission

---

## *Vision*

Links to Quality strives to ensure **all Kansas children have access to high-quality early care and education.**

## *Mission*

*The Links to Quality mission is to:*

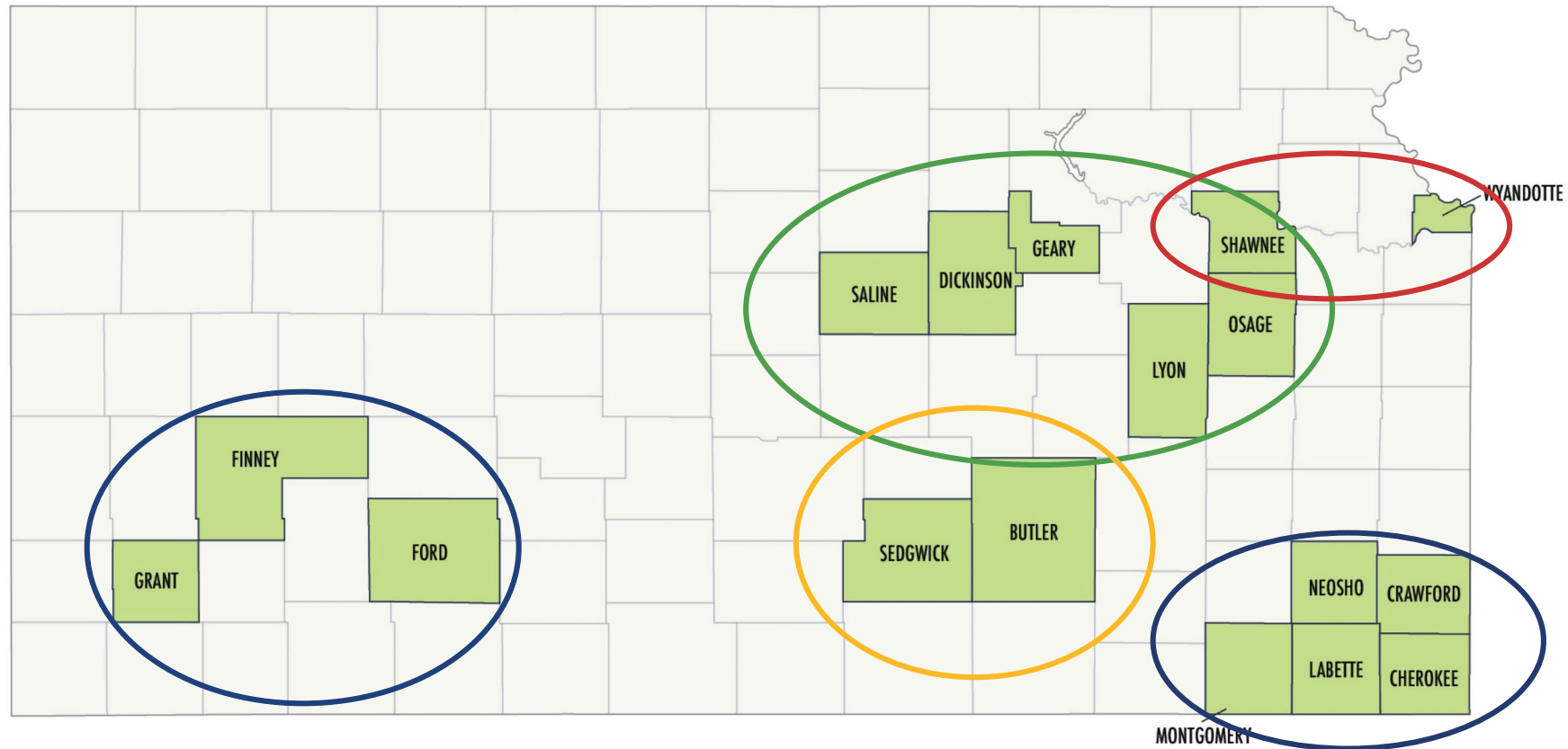
- **Increase quality** in Kansas early care and education care programs by helping providers build upon their strengths, skills, resources, and connections;
- **Empower families** in choosing the early care and education program that best suits their needs; and
- **Strengthen communities** through increased access to quality early care and education and enhanced public-private partnerships.

- Programs
  - Home Based Child Care
  - Center Based Child Care
- Learning Communities
- Community Consultants
- Links – Quality standards in key areas
- Evidence Submission – Portfolio System



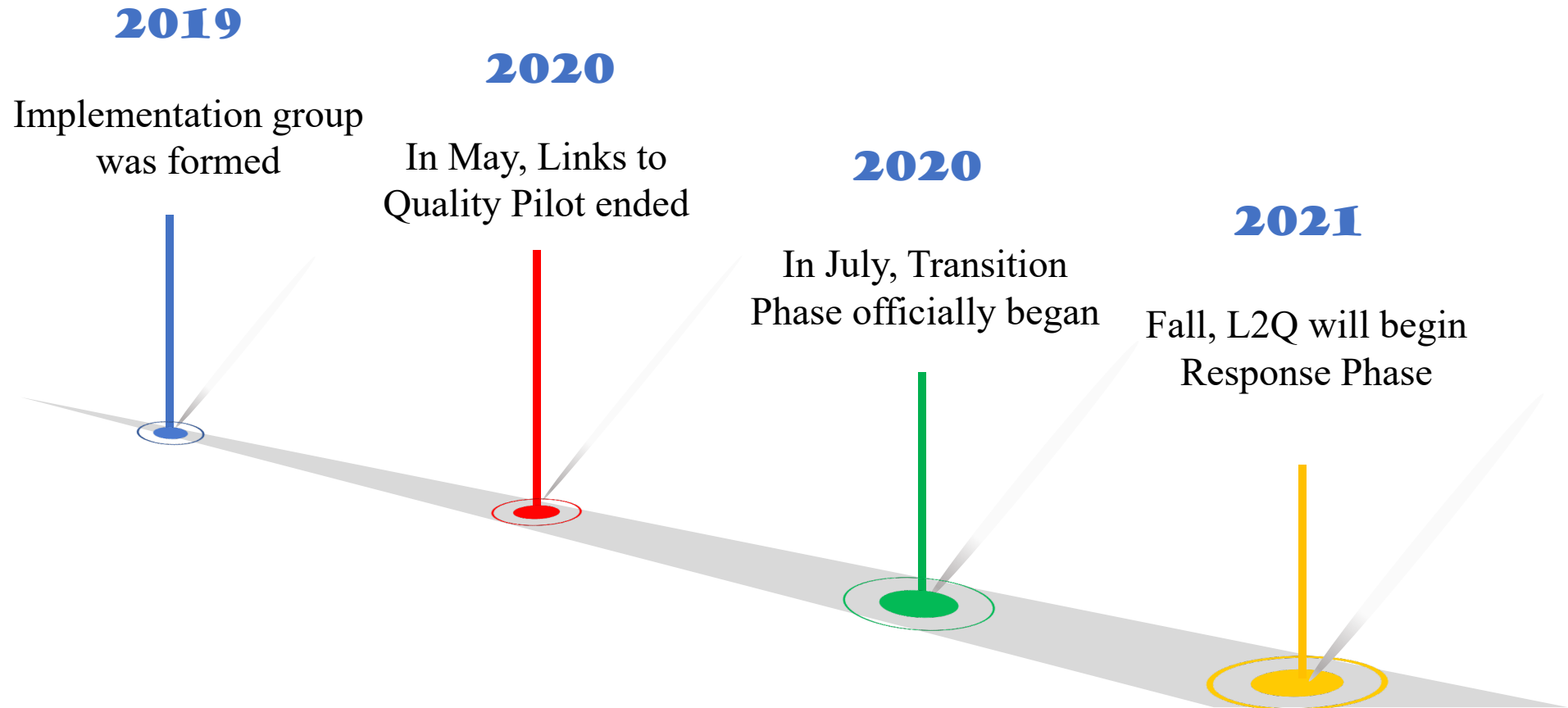
# Links to Quality Pilot

April 2018 to May 2020



# Links to Quality

## Transition Timeline





# What are Links?

Links are “Program quality standards” designed to:

- Acknowledge the quality and achievements of Kansas child care providers.
- Support continuous quality improvement.
- Be a next step after licensing to advance quality.
- Align with state and national standards.
- Compliment, not replace, accreditation and early learning standards.





# Link Structure

---

- **Link topic area**

Generally acknowledged topic area for the link

- **Indicator**

Efforts that have been identified as contributing to high-quality child care in each topic area

- **Benchmark**

Activities an L2Q participant must engage in or complete in order to satisfy the requirements of each indicator

- **Evidence/Guidance**

Documentation an L2Q participant must submit to provide proof that benchmarks have been met

- **Criteria**

The elements pieces of evidence must include in order to be considered complete and satisfactory for L2Q requirements

# Links to Quality

## The Foundation Links



# Links to Quality

## The Foundation Links



### **Program Leadership Program Administration**

#### **Focus of Indicators:**

- Policies and procedures
- Finance management
- Workforce support



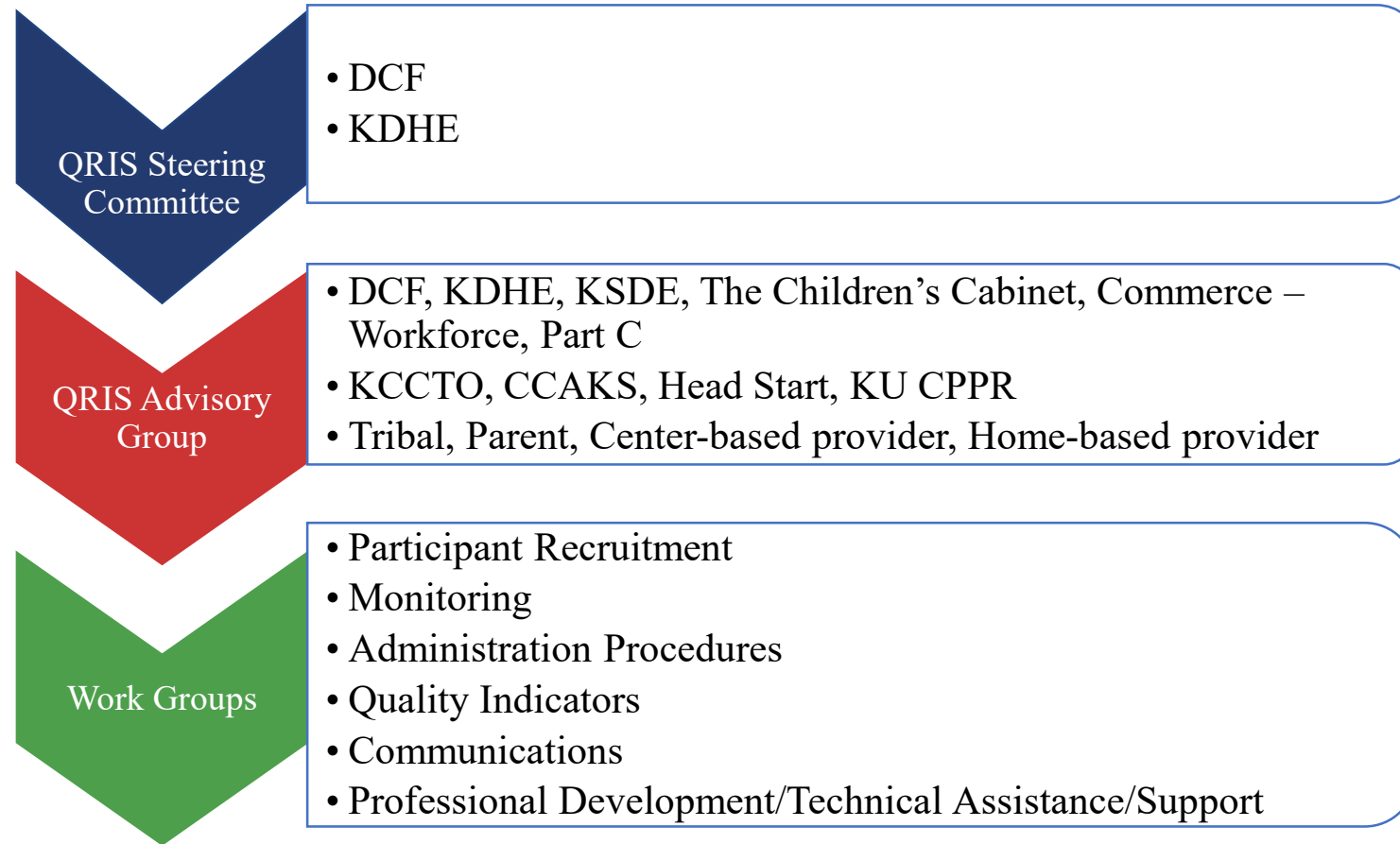
### **Family Partnerships**

#### **Focus of Indicators:**

- Ongoing communication
- Child-centered goals
- Resource sharing

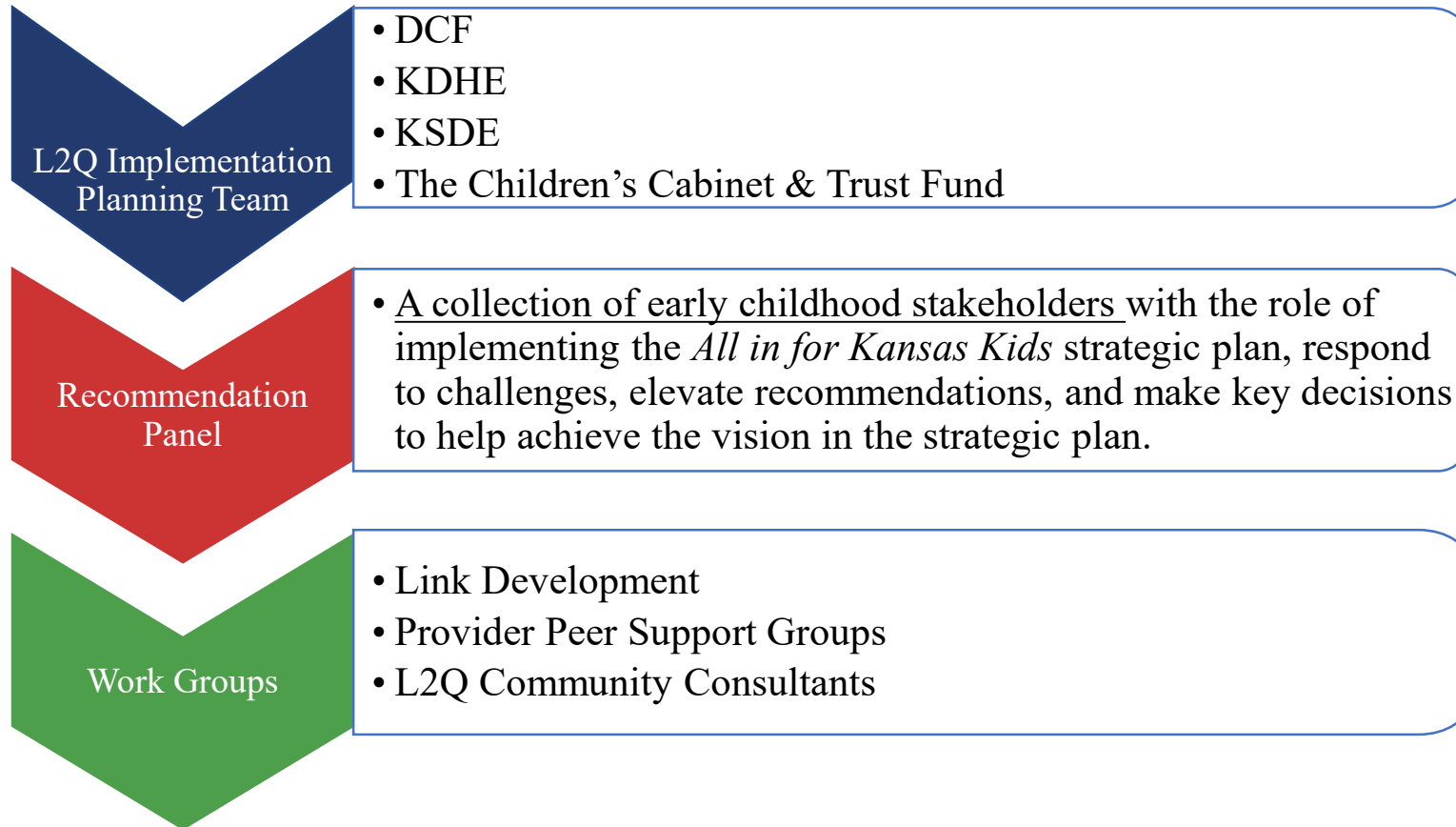
# Link Development

## Original Organizational Chart



# Link Development

## Current Organizational Chart



# Link Development Work Group

## Expectations

- Flexibility and fluidity
- Four – five commitment minimum
- Outside of meeting time work
- Research and data driven



### Learning & Development

#### **Focus of Indicators:**

- Positive relationships and interactions
- Social and emotional development
- Culturally responsive learning environments
- Developmentally-appropriate curriculum and instruction

#### **Standard Alignments:**

- Head Start Program Performance Standards (HSPPS)
- National Association for Educators of Young Children (NAEYC)
- National Association for Family Child Care (NAFCC)
- Caring for our Children
- Kansas Pre-Kindergarten Guide
- Division for Early Childhood

#### **Assessment Alignments:**

- Classroom Assessment Scoring System (CLASS)
- Early Childhood Environmental Rating Scale (ECERS)





### Health & Safety

#### **Focus of Indicator:**

- Nutrition and food service
- Physical activity
- Risk management
- Emergency Preparedness

#### **Standard Alignments:**

- Head Start Program Performance Standards (HSPPS)
- National Association for Educators of Young Children (NAEYC)
- National Association for Family Child Care (NAFCC)
- Caring for our Children (CFOC)
- Child and Adult Care Food Program (CACFP)

#### **Assessment Alignments:**

- Business Administration Scale (BAS)
- Program Administration Scale (PAS)
- Go-NAPSACC

# What is Next?





### Health & Safety

#### **Focus of Indicator:**

- Nutrition and food service
- Physical activity
- Risk management
- Emergency Preparedness

#### **Standard Alignments:**

- Head Start Program Performance Standards (HSPPS)
- National Association for Educators of Young Children (NAEYC)
- National Association for Family Child Care (NAFCC)
- Caring for our Children (CFOC)
- Child and Adult Care Food Program (CACFP)
- Go-NAPSACC

#### **Assessment Alignments:**

- Business Administration Scale (BAS)
- Program Administration Scale (PAS)



# Thank you

---

## **Megan Smith**

Links to Quality Development Specialist

[megan.m.smith@ks.gov](mailto:megan.m.smith@ks.gov)

## **Rachel Anno**

QRIS Program Manager

[rachel.anno@ks.gov](mailto:rachel.anno@ks.gov)

# WORK GROUP INFORMATION

- After our break, please join your assigned Work Group – Zoom links were sent in advance
- Quality & Environments Work Group remains in main meeting room
- Separate Zoom links provided for:
  - Child Care Recruitment & Retention
  - Family Partnerships
- You will return to this main room after our breakout session







**BREAK**



*The Kansas Early Childhood Recommendations  
Panel Work Groups will begin breakout sessions  
following a ten minute break.*

*Livestreaming for each group is available via the  
Children's Cabinet YouTube.*



# WORK GROUP REPORTS

Each Work Group will share a brief (5 minute) report.

- Child Care Recruitment & Retention
- Family Partnerships
- Quality & Environments





# UPCOMING MEETINGS AND BRIGHT SPOTS

Requests for future agenda items

**\*\*Bright Spots – Panel members are invited to share\*\***

Upcoming Meetings (all via Zoom):

- Early Childhood Recommendations Panel: Friday, October 15 - 9:00-11:30 a.m. (Third Fridays of the month, 9:00-11:30 a.m.)
- Children's Cabinet and Trust Fund meeting – Friday, October 1 – 9:00 a.m. – 12:00 p.m.
- Early Childhood Stakeholders Group meeting – Friday, October 1 – 1:30-3:00 p.m.





# Adjourn

