

All In For Kansas Kids



Early Childhood
Recommendations Panel

MEETING AUGUST 20, 2021



WELCOME

Thank you for serving Kansas children, their families, and our state's early childhood care and education professionals!

This is a remote meeting.

- Today's meeting materials are posted on the [Panel Meetings webpage](#) on the Children's Cabinet site.
- Panel members will clearly identify themselves when they begin speaking.
- Panel members can use the "raise hand" feature to show they are ready to share.



TODAY'S AGENDA – PART 1

- Welcome, approval of August 2021 agenda and July 2021 meeting minutes
- Kansans' Open Forum
- Kansas Early Learning Standards (KELS) discussion
- Supporting You Peer Support Network



TODAY'S AGENDA – PART 2

10-minute break at 9:55 a.m.

- Work Group breakout sessions
- Work Group reports
- Future Agenda Items / Bright Spots / Upcoming Meetings
- Adjourn



ACTION ITEMS

Panel members - please clearly identify yourself when you begin speaking to make and second a motion.

- Approval of Agenda
- Approval of July 16, 2021 meeting minutes



KANSANS' OPEN FORUM

Kansans may email Amanda Petersen (apetersen@ksde.org) by 5:00 p.m. on Thursday, August 19 to share written comments or to sign up to share verbal comments with the Panel during this portion of the meeting.



All In For Kansas Kids



Kansas Early Learning Standards
discussion

NATALIE MCCLANE / KIM KENNEDY



Kansas Early Learning Standards



Are there any gaps that should be considered in the future?



What is particularly helpful?



What could be improved?

Questions?





Natalie McClane
Early Childhood Consultant
Kansas Department of Education
(785) 296-5081
nmcclane@ksde.org

Kimberly Kennedy
Head Start Collaboration Director
Kansas Department for Children and
Families
(785) 368-6354
kimberly.kennedy@dcf.gov

The Kansas State Department of Education does not discriminate on the basis of race, color, national origin, sex, disability or age in its programs and activities and provides equal access to the Boy Scouts and other designated youth groups. The following person has been designated to handle inquiries regarding the nondiscrimination policies: KSDE General Counsel, Office of General Counsel, KSDE, Landon State Office Building, 900 S.W. Jackson, Suite 102, Topeka, KS 66612, (785) 296-3201.



All In For Kansas Kids



Supporting You Peer Support
Network

HEATHER SMITH



SUPPORTING YOU

A Peer Support Network

A program of the Kansas Department of Health and Environment

What is Supporting You?

What is Supporting You all about?

Vision: *Strengths-based supports and services are available to promote healthy families and relationships.*



Purpose

Individuals and families have peer connections through a system of support.

Mission

Connect with a trained peer who share experiences to support the health of their family.

Why is Supporting You needed?

Support

Peer support is a strong measure of individual/family support.

Health

Peer support improves one's mental and emotional health.

Connection

Peer support can connect people to services they didn't know they would need.



Supporting You: Importance of Peer Connection



stronger communities
healthier families
connectedness
resources

Network Program

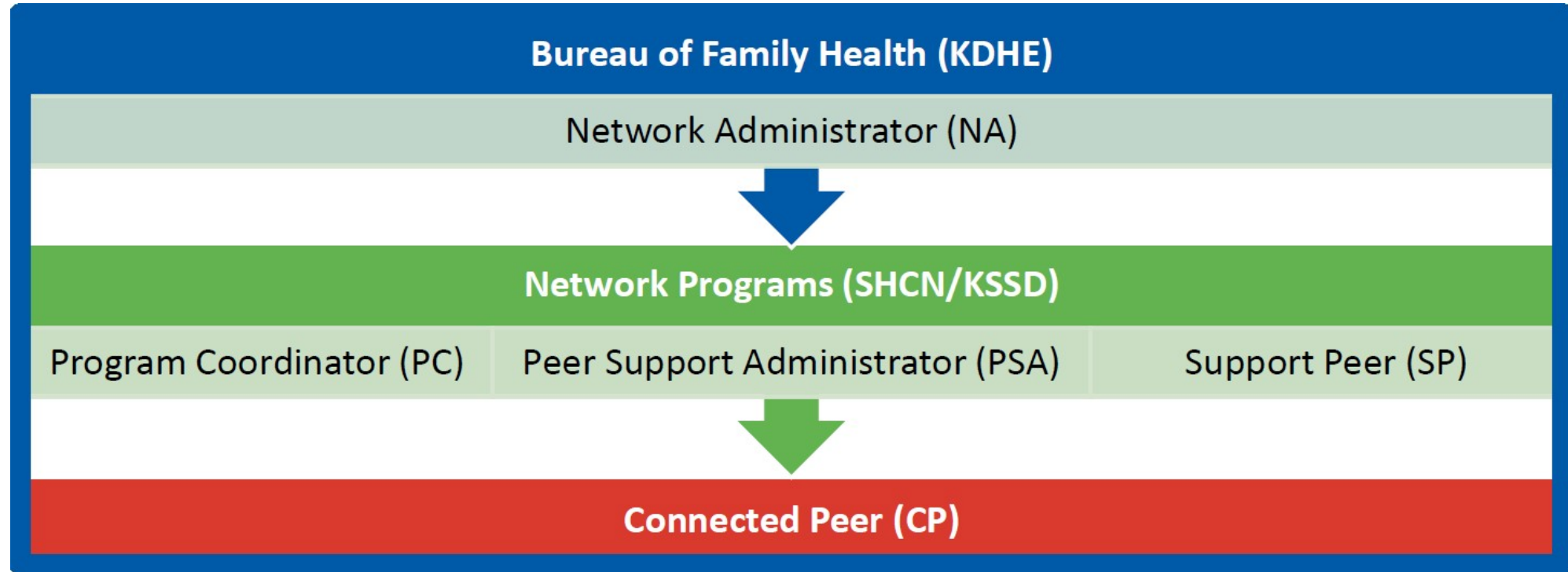
- Unique population not covered by existing Network Programs
- Desire to support individuals and families through peer to peer connection

Promotional Partner

- Desire to spread peer to peer supports for existing populations



Supporting You



Network Administrator (NA): network oversight, database management, and program recruitment

Program Coordinator (PC): program management, network evaluation, and delegation of duties

Peer Support Administrator (PSA): SP recruitment, CP matches, and ongoing support for all Peers

Support Peer (SP): support for a peer looking for someone to talk to

Connected Peer (CP): looking for support from someone who has “been there before”

Supporting You

Someone has a
specific experience.

Someone is looking
to talk to someone
who knows what they
are going through.



Supporting You Peer Experience

Support Peer (SP)

- Trained volunteer, associated with a Network Program
- Provides support for a peer looking for someone to talk to

Connected Peer (CP)

- Person seeking support



Supporting You Peer Training



100 Series

- About Supporting You
- Confidentiality
- Communication

200 Series

- Network Program Specific
- You design your own!

300 Series

- Other expanded trainings

Supporting You Peer Experience

THE CONNECTION PROCESS

PEER COMPLETES QUESTIONNAIRE

Applications can be completed online at www.SupportingYouKansas.org



PSA MAKES CONNECTIONS

Connects with CP to learn what they needs; Identifies SP for a match; Connects SP with CP



PEER SUPPORT BEGINS

Support Peer reaches out to the Connected Peer; PSA available for either peer as needed

Target Population – Discussion, Needs, Next Steps



To protect and improve the health and environment of all Kansans

Questions? Want more info?

Cora Ungerer

Supporting You Network
Administrator

Cora.Ungerer@ks.gov



Heather Smith

System of Supports
Section Director

Heather.Smith@ks.gov

WORK GROUP INFORMATION

- After our break, please join your assigned Work Group – Zoom links were sent in advance
- Quality & Environments Work Group remains in main meeting room
- Separate Zoom links provided for:
 - Child Care Recruitment & Retention
 - Family Partnerships
- You will return to this main room after our breakout session





BREAK



*The Kansas Early Childhood Recommendations
Panel Work Groups will begin breakout sessions
following a ten minute break.*

*Livestreaming for each group is available via the
Children's Cabinet YouTube.*



WORK GROUP REPORTS

Each Work Group will share a brief (5 minute) report.

- Child Care Recruitment & Retention
- Family Partnerships
- Quality & Environments



UPCOMING MEETINGS AND BRIGHT SPOTS

Requests for future agenda items

****Bright Spots – Panel members are invited to share****

Upcoming Meetings (all via Zoom):

- Early Childhood Recommendations Panel: Friday, September 17 - 9:00-11:30 a.m. (Third Fridays of the month, 9:00-11:30 a.m.)
- Children's Cabinet and Trust Fund meeting – Friday, October 1 – 9:00 a.m. – 12:00 p.m.
- Early Childhood Stakeholders Group meeting – Friday, October 1 – 1:30-3:00 p.m.





Adjournment

