

All In For Kansas Kids



Early Childhood Recommendations Panel

MEETING JUNE 18, 2021



WELCOME

Thank you for serving Kansas children, their families, and our state's early childhood care and education professionals!

This is a remote meeting.

- Today's meeting materials are posted on the [Panel Meetings webpage](#) on the Children's Cabinet site.
- Panel members will clearly identify themselves when they begin speaking.
- Panel members can use the "raise hand" feature to show they are ready to share.



TODAY'S AGENDA

- Welcome, approval of agenda and May 21, 2021 meeting minutes
- Kansans' Open Forum
- Follow-up from previous meetings:
 - #KSBeatsTheVirus 2021
 - Strategies for Engaging Providers
 - Federal Child Care Relief Funding



TODAY'S AGENDA

- 1-800-CHILDREN
- Wichita State University Community Engagement Institute
- *10-minute break at 10:20 a.m.*
- Maximizing federal relief dollars to support early childhood in Kansas
- Reflections on the Kansas Early Childhood Recommendations Panel's first year of work
- Future agenda items / Bright Spots / Upcoming Meetings
- Adjourn



ACTION ITEMS

Panel members - please clearly identify yourself when you begin speaking to make and second a motion.

- Approval of Agenda
- Approval of May 21, 2021 meeting minutes



KANSANS' OPEN FORUM

Kansans may email Debbie Deere (ddeere@ksde.org) by 5:00 p.m. on Thursday, June 17, to share written comments or to sign up to share verbal comments with the Panel during this portion of the meeting.





FOLLOW-UP FROM PREVIOUS MEETINGS



FOLLOW-UP FROM PREVIOUS MEETINGS

- [#KSBeatsTheVirus](#) 2021
- Strategies for Engaging Providers workgroup
- Federal Child Care Relief Funding



All In For Kansas Kids



1-800-CHILDREN Input /
Planning Session

PAM NOBLE / KAITLYN MOORE

Judgment-free Parenting Support

1-800-CHILDREN
Call Line & Resource Directory



1-800-CHILDREN
Supporting Parents

Powered by Kansas Children's Service League



Quick Reference Guide for Providers



Quick Reference Guide: How to include and update program information in the 1-800-CHILDREN Resource Directory

An easily accessible, reliable, and organized system of community resources ensures that Kansas families and communities are connected to the information, services, and supports they need, when they need them. The 1-800-CHILDREN Resource Directory and Call Line provides 24-hour, confidential, free information, support, and connection to local resources across the state. Every program added to the 1-800-CHILDREN Resource Directory is reviewed, updated, and verified, at minimum, every 6 months.

To ensure a robust and reliable resource directory we need your help. Step-by-step directions are outlined in the following pages to assist you in updating, adding, and/or claiming your program in the statewide 1-800-CHILDREN Resource Directory.



Visit 1800CHILDRENKS.org to find resources near you.



Download the mobile app by searching 1800CHILDRENKS in your app store.



Call 1-800-CHILDREN (or 1-800-332-6378) to connect with a real person.



Text or email 1800CHILDREN@kcsli.org.



1-800-CHILDREN
Supporting Parents

1-800-CHILDREN is available 24/7 to connect you with resources and supports.

Include a Search Bar directly on Your Website!

Find helpful resources near you or call 1-800-CHILDREN.

SEARCH

 1-800-CHILDREN | Supporting Parents

Include a Hyperlinked Graphic in Your Email or Website



1-800-CHILDREN
Supporting Parents

HELPLINE AND RESOURCE DIRECTORY

Marketing Campaign Updates

- 12 Month Campaign
- On-line display Advertisements, Streaming TV, Spotify, and Facebook.
- Will target varying users within the State of Kansas using a variety of demographics

**WE ARE IN
YOUR
CORNER**

1-800-Children provides
24/7 judgment-free
parenting support



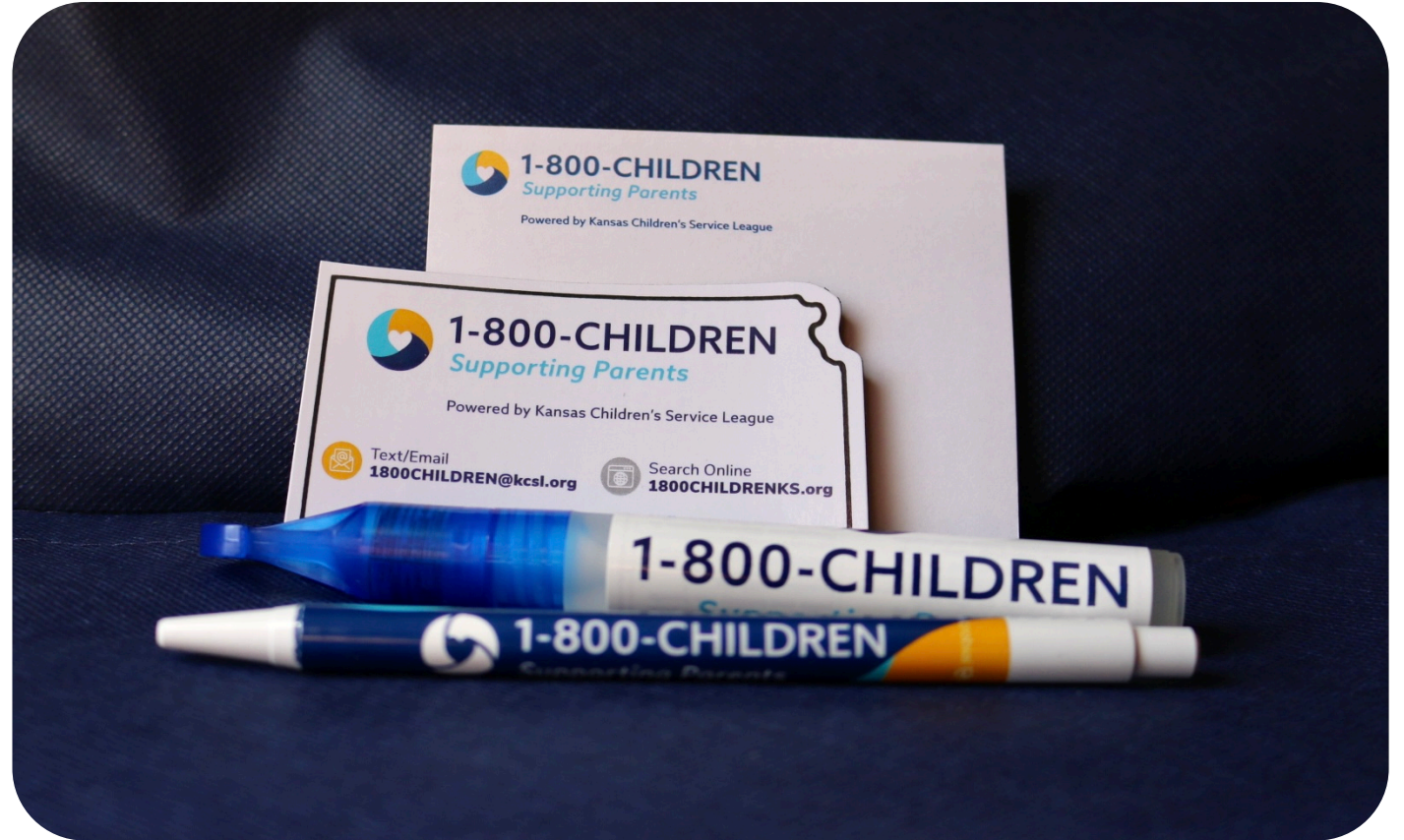
1-800-CHILDREN
Supporting Parents

Powered by Kansas Children's Service League



Physical Marketing Materials

- Pens
- Magnets
- Hand Sanitizer Spray
- Sticky notepads
- Stickers
- Window Clings



Onesie Campaign – Saline County

Partners

- Saline County Health Dept.
- Heartland Early Education
- Child Care Award
- Ashby House
- Salina Emergency Aid/Food Bank
- Salina Regional Health Center
- CAPS
- Area 25 Kansas (AA groups)
- Salina Regional Health Center: Infant-Child Development
- Oxford House
- Catholic Charities Pregnancy Support Program
- DVACK
- Salina Family YMCA
- Salina Public Library
- Salina Salvation Army
- Salina Women's Clinic
- Salina Childcare Association



Family Outreach

Why is there spit-up everywhere?

What's this thing called balance I hear other dads talking about?

How do I help my kid deal with the world's meanest third grader?

How much tummy time is too much tummy time?

Where can I find more parent friends?

Is screen time bad for my kid? How about for me?

Should he be potty trained by now?

HOW THE HECK DO YOU GET YOUR BABY TO SLEEP THROUGH THE NIGHT?!

What is cradle cap and what makes it go away?

Will my teenager ever think I'm cool again?

Is green poop normal? OK, what about yellow poop?



1-800-CHILDREN
Supporting Parents

**When it comes to raising your child,
no question is off limits.**

Get judgment-free parenting support
24/7 in English and Spanish
as well as multiple other languages.



Call 1-800-CHILDREN.
(or 1-800-332-6378)



Download the mobile app by searching
1800CHILDRENKS in your app store.



Text or email 1800CHILDREN@kcsf.org.



Visit 1800CHILDRENKS.org
to find resources near you.



1-800-CHILDREN
Supporting Parents

Powered by Kansas Children's Service League



New Materials

- Outreach cards and materials
- Parent Focus Groups at Parent Leadership Conference



Outreach Efforts

Connecting with School Districts and Early Learning Programs

Additional Recommendations

BRIGHT SPOT

A county health professional stated "It [1-800-CHILDREN] really is neat- I received some educational materials to place in my exam rooms and before doing so I thought I'd test it out. They are responsive both via text and email- and it's a real person – not an automated reply. It provided great educational information on my concerns and feedback as you would reply, along with positive reassurance. Hopefully, this will aid in reaching some parents who may be shy about reaching out for help or assistance, giving them the opportunity to speak with someone 24/7 via multiple ways".



1-800-CHILDREN

BRIGHT SPOT

A mom of a newborn called 1-800-CHILDREN crying because she was feeling overwhelmed, healing from a c-section and supporting her 4-year-old doing remote school due to COVID. She stated she needed help with the 4-year-old. Call line staff were able to connect her with the Crisis Nursery program. The case manager was able to secure child care for the following Monday. When call line staff followed up with mom, she expressed feeling relieved.



1-800-CHILDREN

Contact Us!

Kaitlyn Moore
Community Engagement & Marketing Coordinator
kamoore@kcsli.org



1-800-CHILDREN

Supporting Parents

Powered by Kansas Children's Service League




Funds for this project are provided through the Department of Health and Human Services (HHS), Administration for Children and Families (ACF) Every Student Succeeds Act (ESSA). The Preschool Development Grant Birth through Five 90TP0078-01-01 (\$8,943,000.00) was awarded to the Kansas Children's Cabinet and Trust Fund (KCCTF). The Kansas State Department of Education (KSDE), the Kansas Department for Children and Families (DCF), and the Kansas Department of Health and Environment (KDHE) are leading this work with KCCTF. This information or content and conclusions should not be construed as the official position or policy of, nor should any endorsements be inferred by HHS, ACF, or the U.S. Government.

All In For Kansas Kids



Wichita State University Community
Engagement Institute

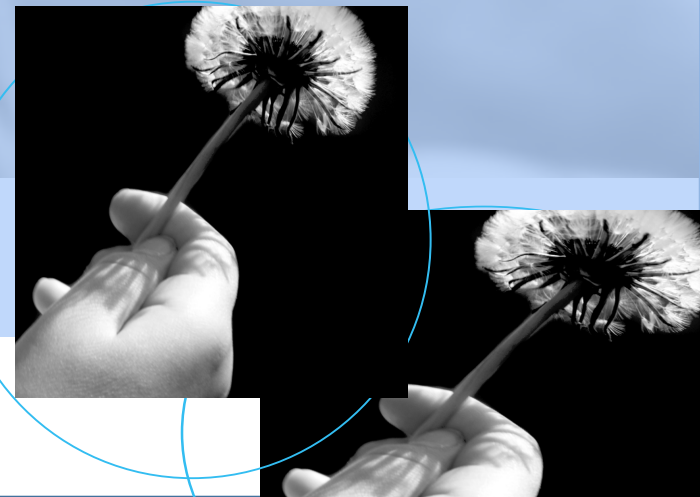
**ANNE MAACK / PATRICIA HOUSTON / TANYA
BULLUCK**



KANSAS
POWER
of the Positive

Family Friendly Workplaces

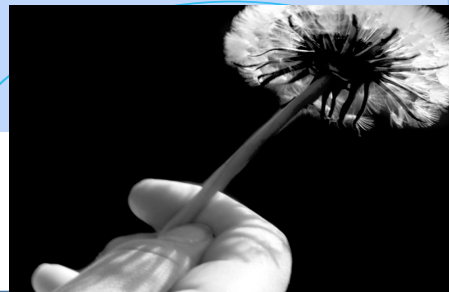
June 18, 2021 Early Childhood
Recommendations Panel





Early Childhood Strategic Plan Private Sector Collaboration

Goal 4

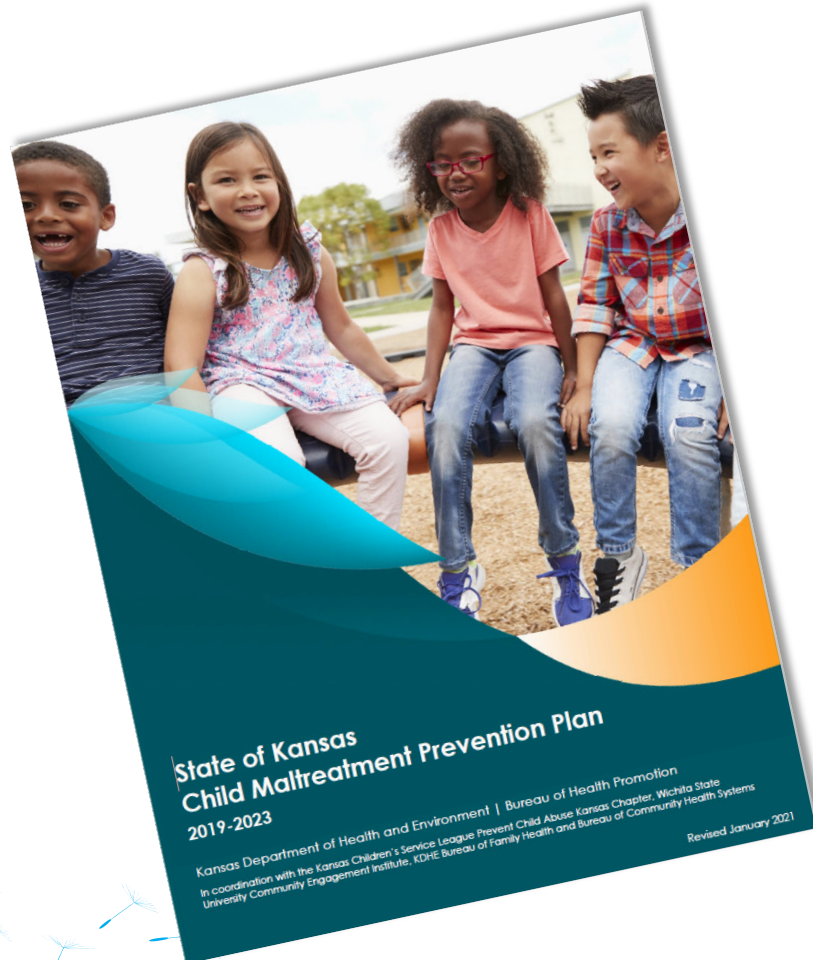


Strategy 4.2

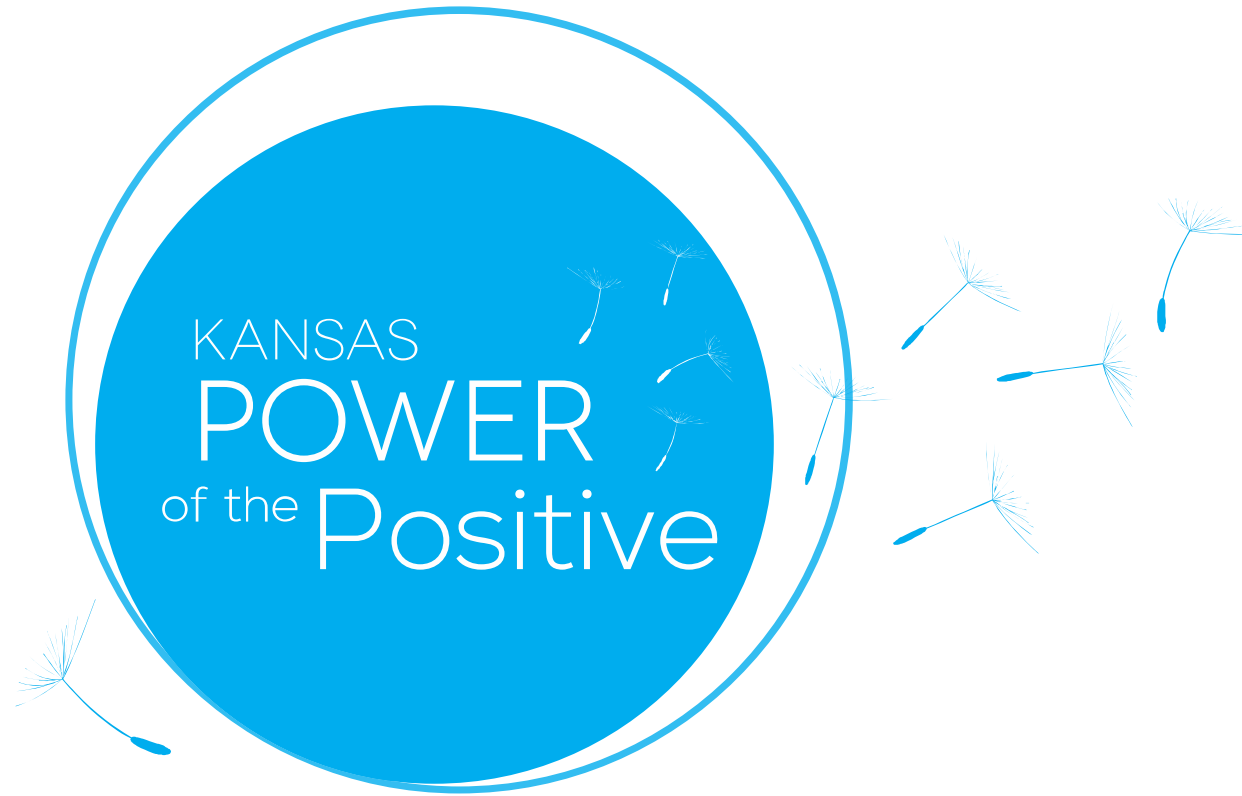
Promote family-friendly workplaces throughout the public and private sectors

Private Sector
Collaboration


KS Child Maltreatment Prevention Plan



Kansas Power of the Positive



Family Friendly Workplace



How important is this to my
ability to provide a
SAFE
STABLE
NURTURING
Environment for my children?

Subsidized Child Care Costs

Employees Said:



Extremely
important

Employers Said:



Not making
changes

Workplace supports for child care affordability

- The Dependent Care Flexible Spending Account
- Child Day Care Assistance Tax Credit

Upcoming Discussion Questions

- Who do you envision delivering these materials to employers?
- Given this list of potential messengers, how could materials be adapted to be more useful?



BREAK



*The Kansas Early Childhood Recommendations
Panel will return following a ten minute break.*



All In For Kansas Kids



Maximizing federal relief
dollars to support early
childhood in Kansas

MELISSA ROOKER, CHILDREN'S CABINET



RELIEF FUNDING OVERVIEW (AFTER 12/30/2020)

- Coronavirus Response and Relief Supplemental Act known as CRRSA
- American Rescue Plan Act State Discretionary Funds known as State ARPA
- American Rescue Plan Act known as ARPA

Federal Relief Picture



2ND SPARK TASK FORCE – STATE ARPA FUNDS

- Strengthening People and Revitalizing Kansans Executive Committee announced on June 4, 2021.
- COVID-19 recovery + build a better, more inclusive and resilient economy for future generations
- Oversee **statewide distribution** of American Rescue Plan Act State Funds (ARPA).
- Executive committee makes recommendations to the State Finance Council, which makes the final determination.

Executive Committee



A POST-COVID KANSAS PLAN GUIDED BY *ALL IN FOR KANSAS KIDS*

- Investing in early childhood makes good sense for Kansas
- Relief and recovery supports, coupled with strategic infrastructure investments, can lead to economic vitality and community well-being
- Build on Needs Assessment, *All in for Kansas Kids* Strategic Plan, and continuous feedback from stakeholders through PDG-R and Strategic Plan implementation.
- Ensure a framework for accelerated investments and lasting Impact

**Positioning Early
Childhood in Kansas**



COMMUNITY AND PROVIDER INSIGHTS

- What local systems or processes are in place to help families navigate early childhood services in your community?
 - What works well?
 - What could be improved?
- What barriers exist for increasing quality child care in your community?
 - What have you done to overcome these barriers?
 - What supports (training, connections, etc.) would you need to meet the need?
 - What resources (staffing, funding, etc.) would you need to meet the need?

Additional Feedback





THANK YOU!

WANT TO SHARE MORE?

EMAIL: SGARDNER10@KU.EDU



All In For Kansas Kids



Reflections on the
Recommendations Panel's first
year

REFLECTIONS – THANK YOU!

- Thank you to each of the Panel members for their dedication to achieving the vision laid out in the All In For Kansas Kids strategic plan in our first year of work!
- Welcome to the 2021-22 members appointed by the Children's Cabinet on June 4.



REFLECTIONS – COLLABORATION SURVEYS

Panel members completed pre- and post-surveys to evaluate collaboration. We learned:

- Overall shift from Networking to Coordination.
- Members perceived a strong collaborative environment - history of collaboration, recognized leadership, and a favorable climate for the work.
- Communication was the greatest area of growth.



UPCOMING MEETINGS AND BRIGHT SPOTS

Requests for future agenda items

Bright Spots – *Panel members are invited to share*

Upcoming Meetings (all via Zoom):

- Early Childhood Recommendations Panel: Friday, July 16 - 9:00-11:30 a.m. (Third Fridays of the month, 9:00-11:30 a.m.)
- Children's Cabinet and Trust Fund meeting – Friday, August 6 – 9:00 a.m. – 12:00 p.m.
- Early Childhood Stakeholders Group meeting – Friday, August 6 – 1:30-3:00 p.m.





Adjournment

