



Cabinet Meeting

FRIDAY, FEBRUARY 5, 2021



Agency Updates



Welcome & Approval of Minutes

KIM MOORE, CHAIR



KANSAS COVID-19 VACCINE INFO

<https://www.kansasvaccine.gov/>

- Kansas is in **Phase 2** for vaccinations, which includes persons aged 65+, congregate settings, high-contact critical workers and unvaccinated Kansans from Phase 1.
- **Eligibility** Includes: K-12 and child care workers, including teachers, custodians, drivers and other staff



OUR WORK

Connector

Convenes diverse stakeholders in children's issues from government, nonprofit, and the private sector.

Champion

Elevates the importance of investing in early childhood and contributes to innovative program approaches.

Strategist

Identifies opportunities for effective collaboration and overcomes barriers to optimal system performance.

Evaluator

Evaluates use of the CIF, contributes to data-informed decision making, and offers practice and policy recommendations.

Manager

Manages grant-making, fund administration, and strategic planning processes.

Roles



SYSTEM IMPACT AND SUSTAINABILITY

	KCCTF	DCF	KDHE	KSDE	KDOC	KBOR	KS Courts
1-800-CHILDREN	✓	✓	✓	✓			
Ages Stages Questionnaire (ASQ)	✓	✓	✓	✓			
Early Childhood Integrated Data System (ECIDS)	✓	✓	✓	✓			
Integrated Referral and Intake System (IRIS)	✓		✓				
KS CommonApp	✓			✓			
Workforce Registry	✓	✓	✓	✓			

**Early Childhood Care
and Education System**





PDG B-5 Renewal Grant Update

MELISSA ROOKER



Preschool Development Grant Year One Reflection



Strengthening the early childhood care and education system in Kansas.

NEEDS ASSESSMENT UPDATE APPROACH

What did we learn in 2020 about the landscape of the early childhood care and education system in Kansas, including:

- The experiences of Kansas children and their families, particularly as reinforced or revealed by the COVID-19 pandemic?
- The strengths and challenges facing the Kansas ECCE workforce, especially considering the ongoing COVID-19 pandemic?
- The Kansas early childhood system, and its many cross-sector relationships, connections, and influences, during the first year of strategic plan implementation?
- Bright spots and innovations across Kansas communities

PDG-Renewal Grant



KANSAS COMMON APP

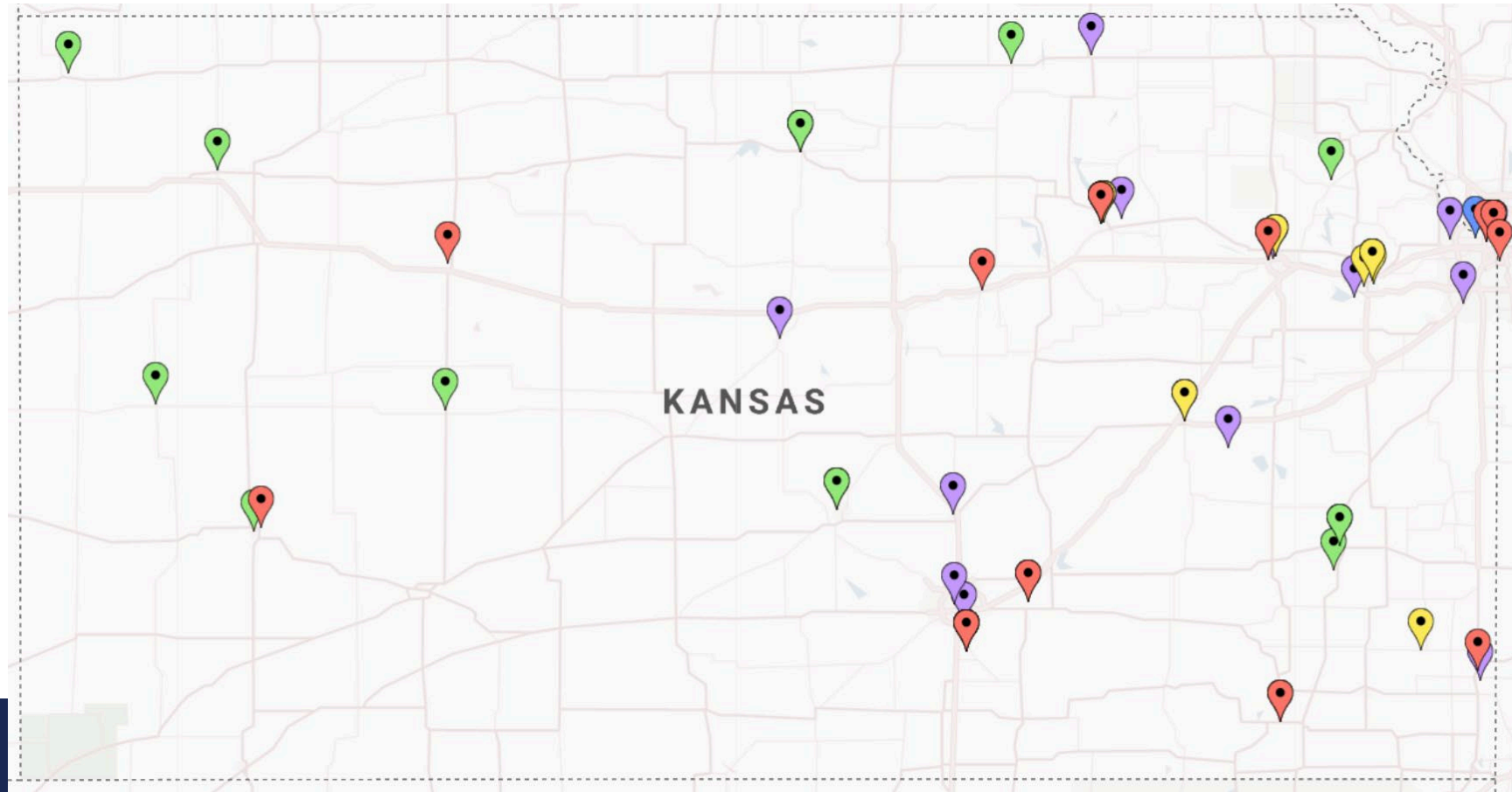
- **Pilot developed with user feedback from 33 stakeholders**
- **Funding Programs To-Date Using the Kansas CommonApp:**
 - CARES Act Remote Learning Grants
 - PDG Quality Subgrants
 - Kansas Preschool Pilot
 - Kansas Parents as Teachers Renewal
 - Early Childhood Block Grants
- **Simplified, Online Review Process**
- **Online Portal with links, FAQs, copy/paste function, and a single user profile**



PDG-Renewal Grant



QUALITY SUBGRANTS



-  Child Care Access (12)
-  Improve Quality Care (24)
-  Connect Families to Services (12)
-  Rural Child Care (13)
-  Kindergarten Readiness (1)

kschildrenscabinet.org/all-in-for-kansas-kids-subgrants/map

SUPPORTING PARENTS



Call 1-800-CHILDREN
(1-800-332-6378)



Download the mobile app by searching
1800CHILDRENKS in your app store



Email or Text 1800CHILDREN@kcsli.org



Visit 1800CHILDRENKS.org to find
resources near you

1-800-CHILDREN



1-800-CHILDREN
Supporting Parents

Powered by Kansas Children's Service League

IMPACT – SEARCH DATA

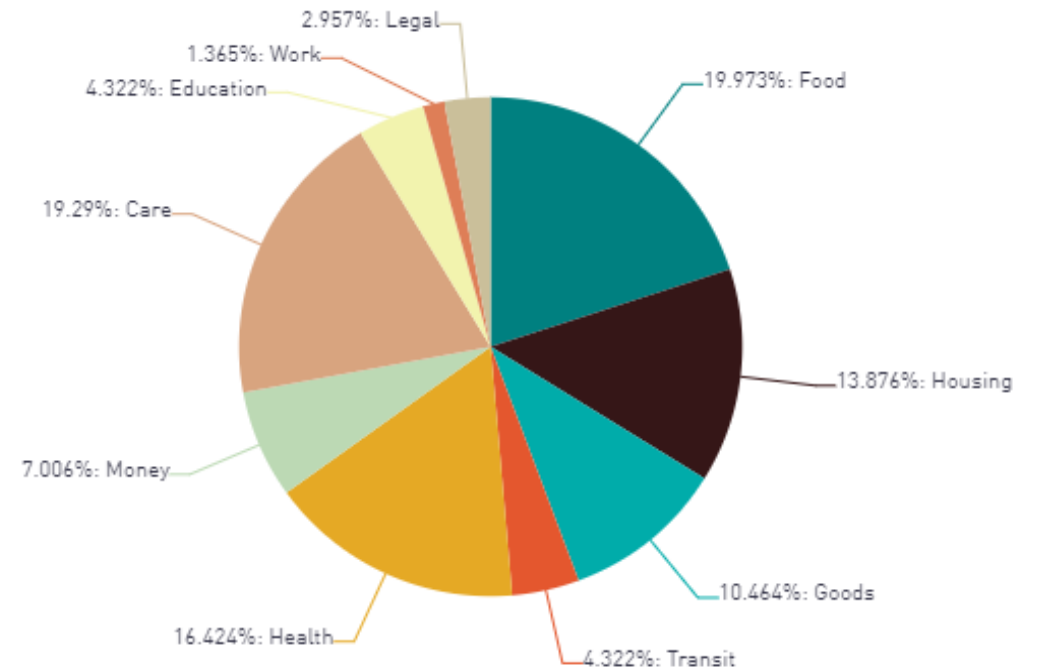
① Searches by Category | 90 Days

Top 5 Search Categories (last 90 days)

- Food, Care, Health, Housing, and Goods

Top 5 Search Terms (last 90 days)

- Food Delivery, Food Pantry, Preschool, Emergency Food



1-800-CHILDREN



1-800-CHILDREN
Supporting Parents

Powered by Kansas Children's Service League

IMPACT – USER DATA

943 Users in last 90 days

Top Counties by User (last 90 days)

- 1. Sedgwick (742)
- 6. Finney (149)
- 10. Cowley (107)

① Top 10 Counties | 90 Days

COUNTY	SEARCHES
Sedgwick, KS	742
Shawnee, KS	638
Johnson, KS	404
Douglas, KS	291
Wyandotte, KS	274
Finney, KS	149
Butler, KS	134
Riley, KS	128
Jefferson, KS	123
Cowley, KS	107

1-800-CHILDREN



1-800-CHILDREN
Supporting Parents

Powered by Kansas Children's Service League

ACTION STEPS

- **Confirm your program(s)** is listed and up-to-date in the resource directory. *(Connect with 1-800-CHILDREN if you have multiple programs to streamline this process)*
- Include the **embeddable search bar** on your website
- Utilize the new 1-800-CHILDREN Resource Directory at **1800childrenks.org**
- Download the **free 1-800-CHILDREN app** *(search “1800childrenks” in iOS or Android app store)*
- Share the electronic **Family Outreach Card** with families and caregivers in your community
- Request a 1-800-CHILDREN resource directory and call line **presentation/demo** – Contact Stephanie Boone at sboone@kcsl.org
- **Promote** 1-800-CHILDREN with your partners and organizations.

1-800-CHILDREN



1-800-CHILDREN
Supporting Parents

Powered by Kansas Children's Service League

PDG B-5 Evaluation

CHRIS TILDEN, KU CENTER FOR PUBLIC
PARTNERSHIPS AND RESEARCH



EVALUATION “PERSPECTIVES”

➤ Reporting:

- *Federal (compliance)*
- *State (All in for Kansas Kids Strategic Plan)*

• Domains:

- *Programs (Early Childhood Care and Education Mixed Delivery System)*
- *Governance*

PDG Evaluation



PROGRAM DATA COLLECTION

- Approximately 40 programs in the mixed delivery system (MDS)
 - Currently collecting data for end-of-year PDG B-5 Annual Project Performance Report
 - Data is primarily inputs & outputs (children served, families served, demographics, staffing, finance/fiscal)
 - Goal is to ensure maximum alignment with other data collection/evaluation efforts

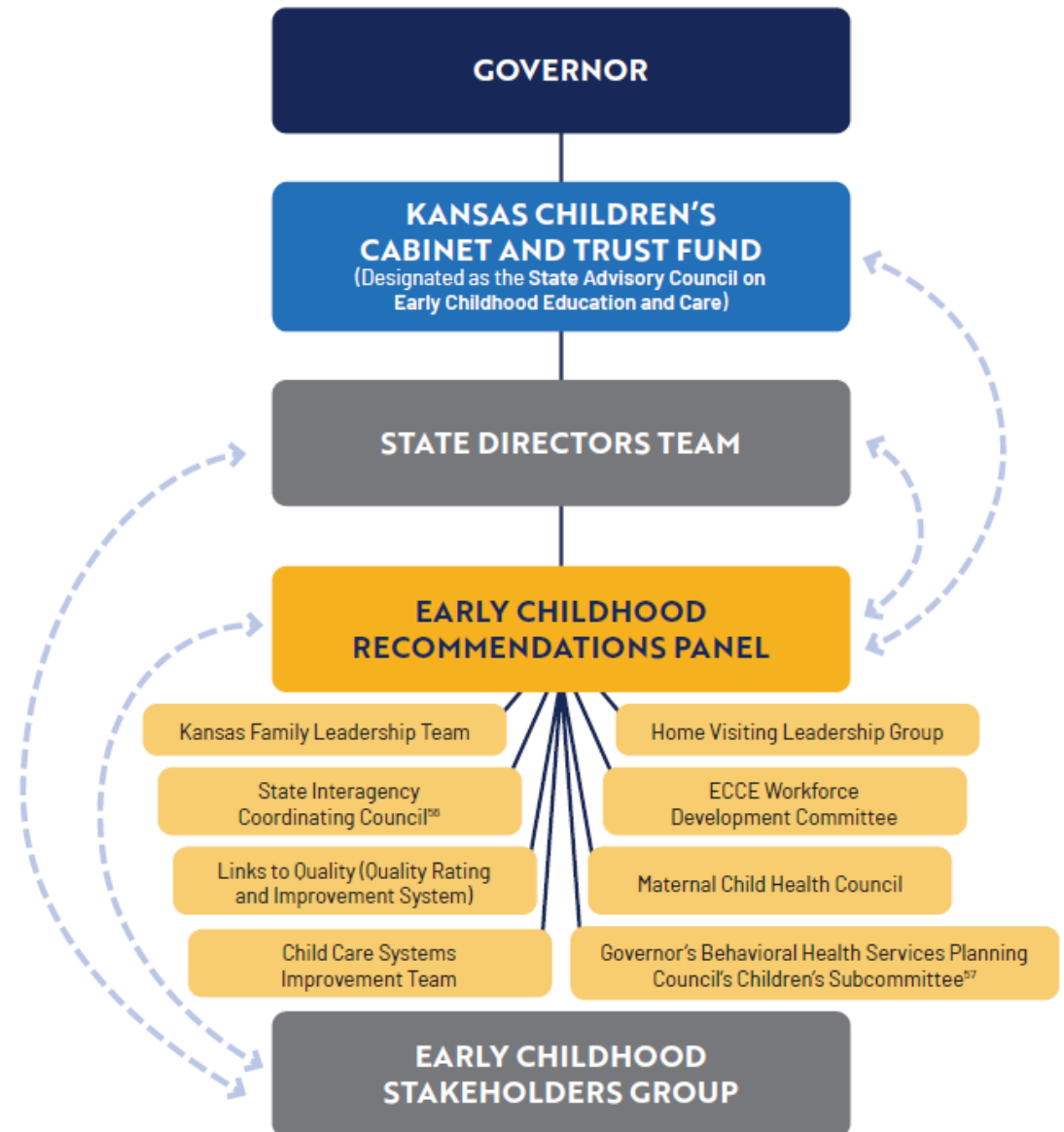
PDG Evaluation



GOVERNANCE

- Collecting qualitative data on discussions/ decisions/ progress/ challenges of the early childhood system governance groups
- Capturing information on alignment of work among groups and alignment with the **strategies** and **indicators of success** in the *All In For Kansas Kids* Strategic Plan

KANSAS EARLY CHILDHOOD GOVERNANCE STRUCTURE



NEXT STEPS

- Federal Annual Performance Report Due May 2021
 - Project Period: 4/30/2020-4/29/2021

PDG Evaluation





Early Childhood Recommendations Panel



AMANDA PETERSEN, CHAIR

ROLE OF THE KANSAS EARLY CHILDHOOD RECOMMENDATIONS PANEL

- The Kansas Early Childhood Recommendations Panel is an **advisory group** to the Kansas Children's Cabinet and Trust Fund.
- The Panel is available to respond to requests made by the Children's Cabinet.



**State-Level
Coordination**



PANEL UPDATE

- December meeting included discussion regarding Kansas' COVID-19 Vaccine Plan, gaps between community needs and state programs to address the pandemic in 2020, and additional lessons learned.
- Visit <https://kschildrenscabinet.org/panel-meetings/> for meeting materials, including detailed minutes of the conversation.



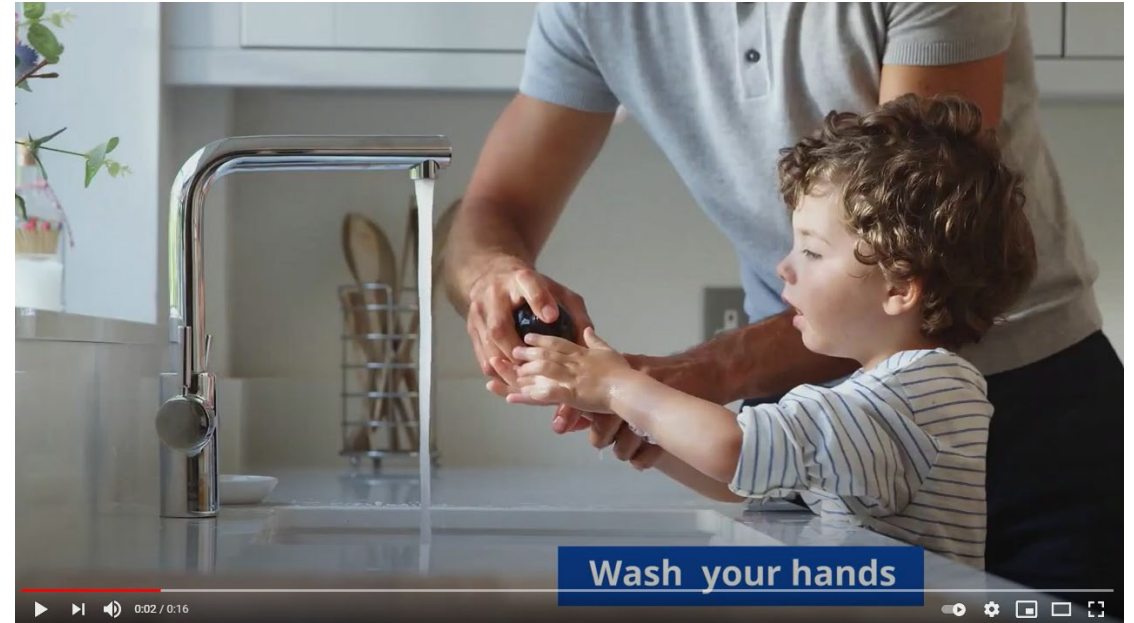
WORK UNDERWAY

- The Kindergarten Transitions Workgroup is disseminating the Kindergarten Transitions Recommendation, MOU, and toolkit.
- The Engaging Providers Workgroup is considering how state agencies can better engage providers while developing policies or seeking feedback.
- Panel members are engaged and eager to have meetings focused on discussion and action.



#KSBEATSTHEVIRUS INITIATIVE

- Developed Facebook profile picture frame, fun videos that encourage safe practices for kids and adults to follow during the pandemic, and social media posts
- Shared on the Children's Cabinet Twitter page and encouraged Panel members to share individually



#KSBEATSTHEVIRUS VIDEO



Protect yourself



Director's Update

MELISSA ROOKER



UPDATE

- **Thriving Families, Safer Children Round Two Learning Cohort**
- **CBCAP Demonstration Project**
- **ECBG**
- **Corona Virus Relief Funds**
- **Panel Appointments**

Director's Update



STAKEHOLDER ENGAGEMENT OPPORTUNITIES

- The **Child Care and Development Fund (CCDF)** provides funding:
 - To assist low-income parents with child care costs
 - Promote learning and development
 - Enhance the quality of child care for all children
- **Stakeholder Survey** – Coming soon on Cabinet website
- **Stakeholder Engagement Sessions** – Kansas CCDF Plan, and other early childhood care and education policy, services, and funding decisions.
 - Wednesday, February 10th Webinar
 - Friday, February 19th Panel Mtg.
 - Friday, February 19th SICC Mtg.
 - Wednesday, February 24th OPEN
 - Friday, February 26th WFDAG Mtg.
 - Saturday, February 27th OPEN

**Child Care
Development Fund**



UPCOMING MEETINGS

Cabinet meetings are held the first Friday of every other month from 9:00 am – 12:00 pm. Will continue to meet virtually until further notice.

2021 Meeting Schedule

- April 9 (2nd Friday)
- June 4
- August 6
- October 1
- December 3

Children's Cabinet

