

All In For Kansas Kids



Strengthening
Early Childhood
in Kansas

WEBINAR FEBRUARY 12, 2020



NEEDS ASSESSMENT

- **87** Site Visits and **1,451** Survey Responses from **400** child care facilities
- **805** early childhood care and education professionals surveyed
- **2,600** individual Stories representing all **105** counties
- **40** Visioning Sessions and Parent Cafes,
- **30** stakeholder meetings
- **45** Needs Assessment Reports gathered
- **460** online feedback entries
- **53** Community Engagement Sessions
- **200** people at Symposium

6,100+ Kansas Voices



NEEDS ASSESSMENT

Central Messages:

- The experiences of families with young children in Kansas are shaped by where they live, both across the regions of the state and within their communities.
- Young children are growing up in families where basic needs are not being met.

Key Findings:

Accessibility



Availability



Navigation



Collaboration



Workforce



Facilities



Systems
Alignment



Bright Spots



NEEDS ASSESSMENT

- Released 2/6/2020
- Available Online – Kansas Children’s Cabinet Website kschildrenscabinet.org/needs-assessment
- Helpful in fostering community discussions, making decisions, state and regional perspectives, etc.

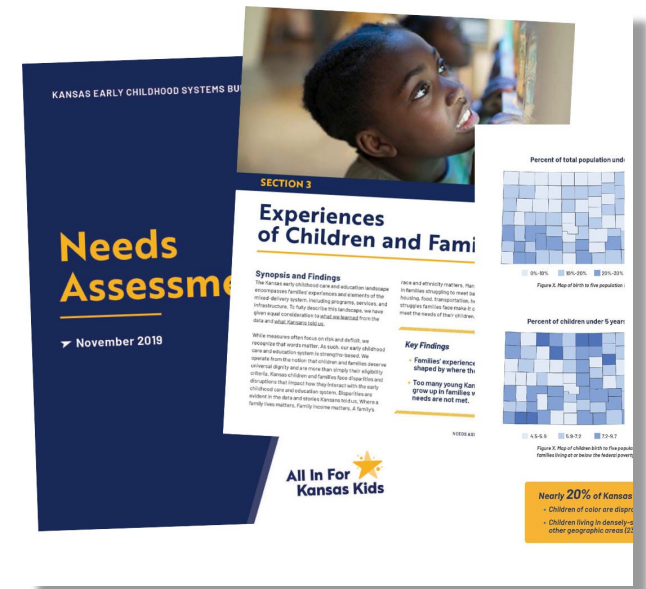


Table X. Geographic Distribution of Children in Kansas

	Frontier	Rural	Suburban	Urban
Children birth to 5*	6,952	13,988	29,250	35,466
Developmental disability†	2.3%	6.9%	9.6%	16.5%
Number of children ages birth to 5 in poverty‡	1,961	2,838	6,885	8,336
Poverty rate (children 0-5) age birth to 5§	28.2%	20.6%	23.5%	23.2%
% children ages 0-5 living in poverty and in rural counties¶	50.6%	44.3%	32.7%	42.1%

Children birth to five are living in poverty
 23% of children ages birth to five are living in poverty, which is higher than the national average of 18.4%. In urban counties, for example,



The stars are aligned
over the great state of Kansas.

APPROACH

- Transform the experiences of children and families who need equitable access to high quality early care and education no matter where they live.
- Reduce the burden of improving local systems by giving communities flexibility to deliver high quality services.
- Assess how funds are spent, build and scale what works, and refine our data systems.

Strategic Plan



OUTLINE

- Executive Summary
- Introduction
 - Importance of Early Childhood
 - History of Early Childhood Care and Education (ECCE) in Kansas
 - Who are youngest Kansans and what will empower them to thrive?
- Vision
- Guiding Principles
- Our Process

Strategic Plan



OUTLINE

- **Overview of Building Blocks** (Strong Families, Healthy Development, Early Learning)
- **Strategic Plan Commitments** (Workforce, Communities, Systems Alignment, Innovation)
 - Need/Challenges
 - Goals and Strategies

Strategic Plan



STRATEGIC PLAN CONTENT

- **Strong Families:** Kansas kids and families are stronger when their basic needs are met.
- **Healthy Development:** Kansas kids and families thrive when they have equitable access to comprehensive health and development services.
- **Early Learning:** Kansas kids are prepared for success in kindergarten and beyond when their families have equitable access to quality care and early learning environments.

Building Blocks



STRATEGIC PLAN CONTENT

- **Workforce:** Kansas will lead the way in developing, supporting, and valuing early childhood professionals.
 - Kansas recruits, retains, and advances a diverse early childhood care and education workforce that is prepared and qualified to meet the changing needs of young children and families.
 - Policies, procedures, and infrastructure support safe, stable, and nurturing environments for young children and families.

Workforce



STRATEGIC PLAN CONTENT

- **Connected Families, Connected Communities:** Kansas will empower and equip communities to create the best environments to raise a child.
 - Families are equal partners in the planning, development, delivery, and evaluation of programs and services that affect their families.
 - Communities and providers have the tools and information needed to streamline access to and navigation of high-quality services for families.
 - Communities are empowered to strengthen the quality and reach of early childhood care and education services in ways that address the unique needs of their population and geographical location.

**Families and
Communities**



STRATEGIC PLAN CONTENT

- **Systems Alignment:** Kansas will align the early childhood care and education system for maximum impact.
 - The Kansas early childhood system is coordinated to optimize the well-being of young children and families.
 - Policies, practices, and programming are child/family-centered to reflect the diverse needs and choices of all families.
 - Early childhood data are integrated to measure what matters for children and families in the early years and beyond.

Systems Alignment



STRATEGIC PLAN CONTENT

- **Innovation and Scaling:** Kansas will champion innovation and create opportunities to invest in the future of Kansas kids.
 - Kansas has policy and funding structures that support high-quality and innovative programming for children and families.
 - Kansas is on the cutting edge of innovative and future-oriented practices that transform the lives of young children and families.

**Innovation and
Scaling**





Feedback and Thoughts?

- What are your high level reactions to the goals and strategies?
- Is there anything missing from the goals and strategies?
- Are there any specific words or language that is unclear?



NEXT STEPS

- **Feedback Phase – Now through February 24**

kschildrenscabinet.org/strategic-plan

- Final Design Phase – February/March
- Completion Date – April 2020

Strategic Plan



EARLY CHILDHOOD GOVERNANCE

- ECAC: Executive Order 20-02 – Signed 2/5/2020
 - Cabinet as the “State Advisory Council on Early Childhood Education and Care”
 - Early Childhood Recommendations Panel – Cabinet Approved Volunteers with Technical Expertise (monthly)
 - Nominations Process Available Soon on Cabinet Website.
- Early Childhood Stakeholder Group (bi-monthly)
- Sub-Committees and Workgroups (as appropriate or scheduled)
- State Directors Team (bi-weekly)

Governance



EARLY CHILDHOOD SYSTEMS-BUILDING

- PDG B-5 Planning Grant – No Cost Extension Period through June 30, 2020
 - Strategic Plan
 - Parent Engagement Efforts
 - Centralized Access and Resource and Referral Supports
 - Coordination Support and Evaluation

Grant Updates



KINDERGARTEN READINESS SUMMIT

- June 4th in Topeka (Washburn)
- Helping Communities Develop Transition Plans
- Reach out to Peggy Kelly and Kim Kennedy

Save the Date!



EARLY CHILDHOOD SYSTEMS-BUILDING

- Completed Needs Assessment available online
- DRAFT Strategic Plan Available for Feedback – February 7-24
- Strategic Plan – April 2020
- Webinars and Email Updates – (kschildrenscabinet.org/early-childhood)

What's Next?



CALENDAR OF EVENTS

- Child Care Aware will host a webinar tomorrow, February 13th to discuss the 2019 Child Care Supply and Demand Report.
- March 25th – Kansas Head Start Association Early Learning Advocacy Day
- June 4th - Kindergarten Readiness Summit in Topeka. Planning is underway for this event to support communities in developing transition plans. More details coming soon!
- October 29-30 - Kansas Breastfeeding Coalition's 2020 Breastfeeding Conference will be held on in Wichita. Registration for October 30th is FREE!
- Friday, April 3, 2020 - Children's Cabinet and Trust Fund Meeting & Early Childhood Stakeholder Team Meeting

Stay Connected





Thank you!

Share Your Thoughts

[KSCCHILDRENSCABINET.ORG/SHARE](https://kschildrenscabinet.org/share)

