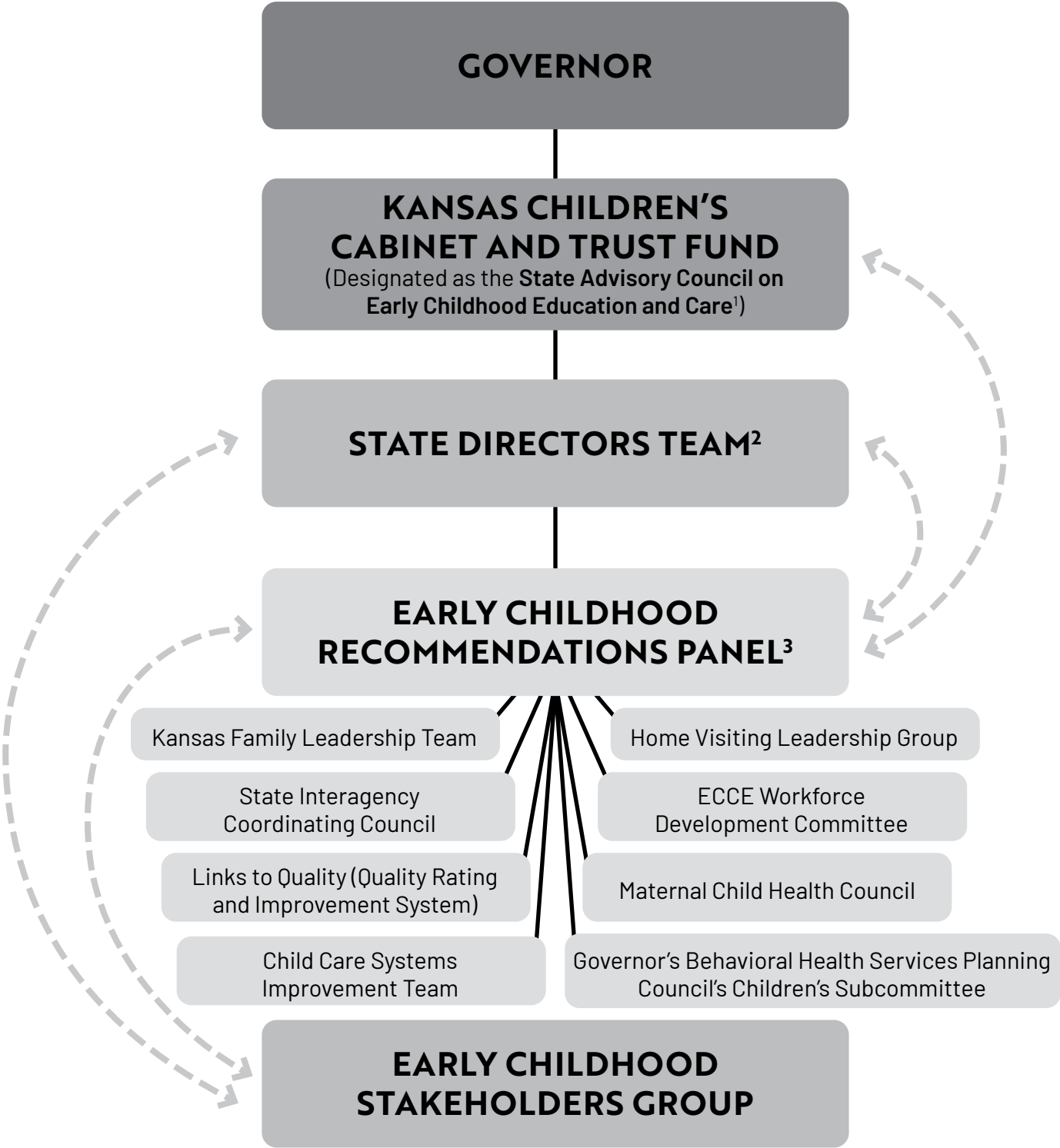


Kansas Early Childhood Governance Structure



1 Children's Cabinet and Trust Fund (Cabinet): Statutory role to assist the Governor in developing and implementing a coordinated, comprehensive service delivery system to the children and families of Kansas. Pursuant to Executive Order No. 20-02, the Cabinet is the designated State Advisory Council on Early Childhood Education and Care. Meets every other month.

2 State Directors Team: Composed of State Directors Team members (Cabinet designees). Meets every two weeks.

3 Early Childhood Recommendations Panel: Pursuant to Executive Order No. 20-02, volunteers are convened by the Cabinet in an advisory role. Meets monthly.