



Cabinet Meeting

FRIDAY, FEBRUARY 7, 2020





WELCOME & APPROVAL OF MINUTES

KIM MOORE





DIRECTOR'S UPDATES

MELISSA ROOKER





BRIGHT SPOTS

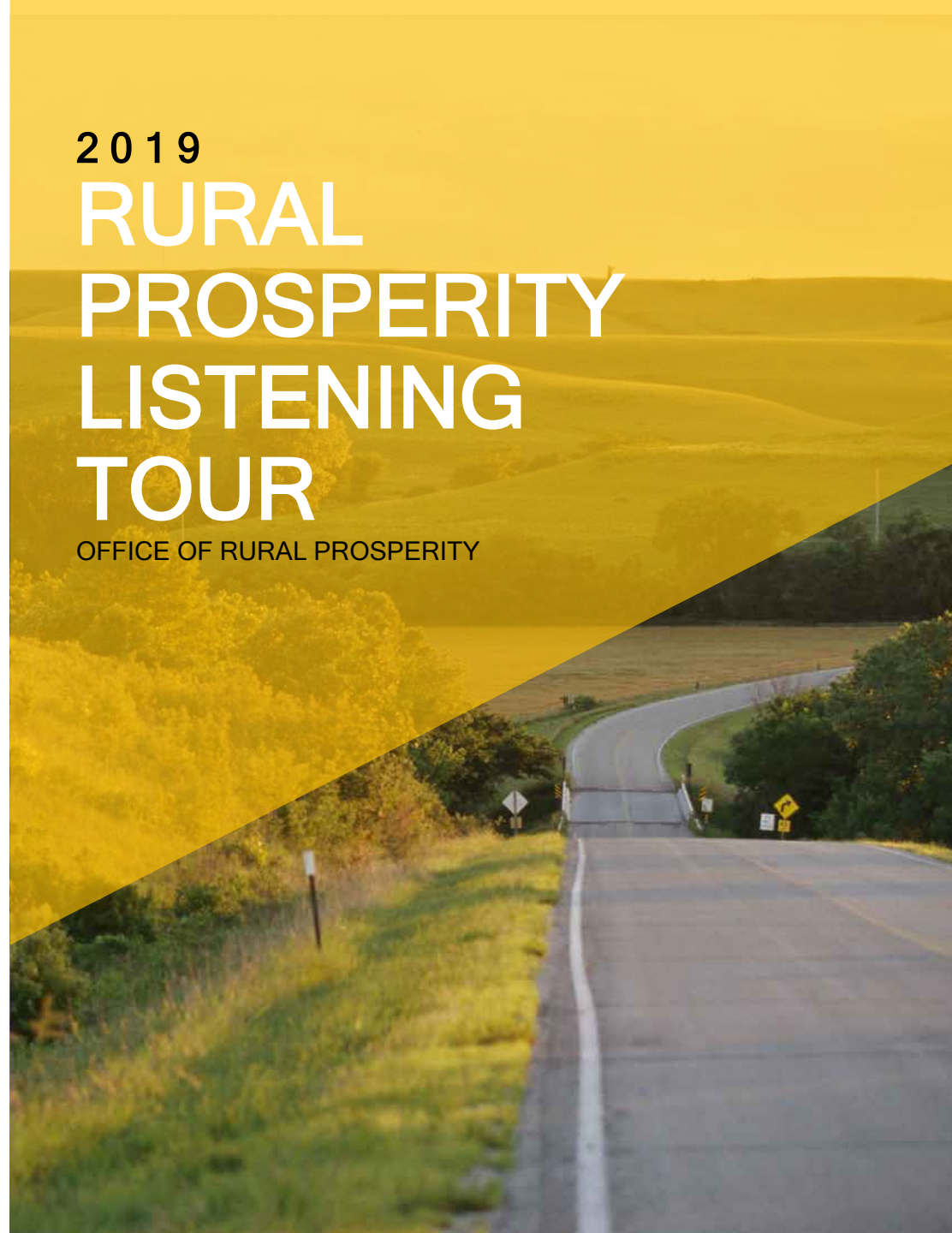
OFFICE OF RURAL PROSPERITY



2019

RURAL PROSPERITY LISTENING TOUR

OFFICE OF RURAL PROSPERITY



TOUR OVERVIEW

- Importance of having conversations and looking for solutions outside of Topeka.
- Listening sessions preceded by community outreach.
- Conversations with Kansans provided blueprint for the Office of Rural Prosperity.
- ORP will continue to focus on connecting communities with one another and with state agencies.



#LynnListens

Join us as Lt. Gov. Lynn Rogers visits your town to discuss plans for rural prosperity in Kansas. He wants to hear what you have to say!



Listening Tour Schedule

Nickerson - June 17th	Winfield - July 8th	Concordia - August 1st
Atchison - June 20th	Lindsborg - July 10th	Sabetha - August 5th
Colby - June 24th	Garnett - July 22nd	Dodge City - August 7th
Phillipsburg - June 25th	Independence - July 23rd	
	Ulysses - July 30th	

ruralkanprosper.ks.gov



Facilitated Conversations

1. What does prosperity look like to you?
2. What has your community done well?
3. What roadblocks/barriers stand in your way?

Visit [ORP.ks.gov](https://www.orp.ks.gov) for the full report.

Expanding Capacity

- ORP Staff
 - Jillian Fisher, Outreach Director
 - Joshua McGinn, Policy Analyst
- Community Development Division
 - The Community Development Block Grant Program (CBDG)
 - The Community Service Tax Credit Program (CSP)
 - The Kansas Main Street Program
 - The Office of Broadband Development



Broadband



Interagency Work Groups

RESEARCH

- Summarize Kansas' progress/action to date.
- Identify the scope of issues, potential causes, & barriers to change.
- Engage other states and state leaders.
- Seek input from stakeholder groups & subject matter experts.

RESOURCES

- Summarize state resources that are currently available & find ways to maximize the State's ROI.
- Catalog alternative funding sources.
- Identify what Technical assistance would be required to harness additional funds.

RECOMMENDATIONS

- Propose internal/administrative changes, and make recommendations to the necessary external parties.
- Develop a long-term strategic vision for progress within their respective subject group.



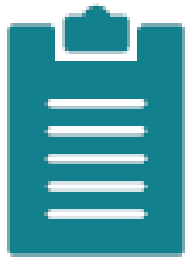
ORP HOUSING WORKING GROUP

- Replicating successful public/private partnerships models across the state
- Expanding moderate income housing
- Removing barriers and encouraging re-development of older/historic property
- Coordinating state funds/investments to maximize impact



ORP CHILDCARE WORKING GROUP

- Encouraging partnerships for a cooperative model for childcare services
- Identifying state and federal resources and tools local communities can use to create their own solution to childcare needs
- Simplifying processes and procedures for child care licensing that maximize efficiencies, while ensuring the safety and welfare of Kansas children



ORP WORKFORCE WORKING GROUP

- Work with the Governor's Education Council to identify new training opportunities within the state's K-12 education system.
- Engage local leaders and economic developers to identify obstacles to recruitment and retention in rural areas.
- Develop partnerships with community colleges to encourage more associate degrees and certificate programs that meet the needs of rural communities.

Childcare Working Group

- Encouraging partnerships for a cooperative model for childcare services.
- Identifying state and Federal resources and tools local communities can use to create their own solutions.
- Simplifying processes and procedures for child care licensing while ensuring safety of Kansas children.





Jillian Fisher | *Outreach Director*

Jillian.Fisher@ks.gov
(785)296-1041

www.ORMP.ks.gov



BLUEPRINT FOR EARLY CHILDHOOD

HEALTHY DEVELOPMENT, STRONG FAMILIES, AND
EARLY LEARNING





EARLY CHILDHOOD SYSTEMS-BUILDING NEEDS ASSESSMENT

AMANDA PETERSEN



Needs Assessment Efforts

87 Site Visits and **1,451** Survey Responses from **400** child care facilities

805 early childhood care and education professionals surveyed

2,600 individual Stories representing all **105** counties

40 Visioning Sessions and Parent Cafes, **30** stakeholder meetings

45 Needs Assessment Reports gathered, **460** online feedback entries

53 Community Engagement Sessions, **200** people at Symposium

6100+ Voices



Central Messages & Key Findings

Central Messages:

- The experiences of families with young children in Kansas are shaped by where they live, both across the regions of the state and within their communities.
- Young children are growing up in families where basic needs are not being met.

Key Findings:

Accessibility



Availability



Navigation



Collaboration



Workforce



Facilities



Systems
Alignment



Bright Spots



Needs Assessment

All In For
Kansas Kids

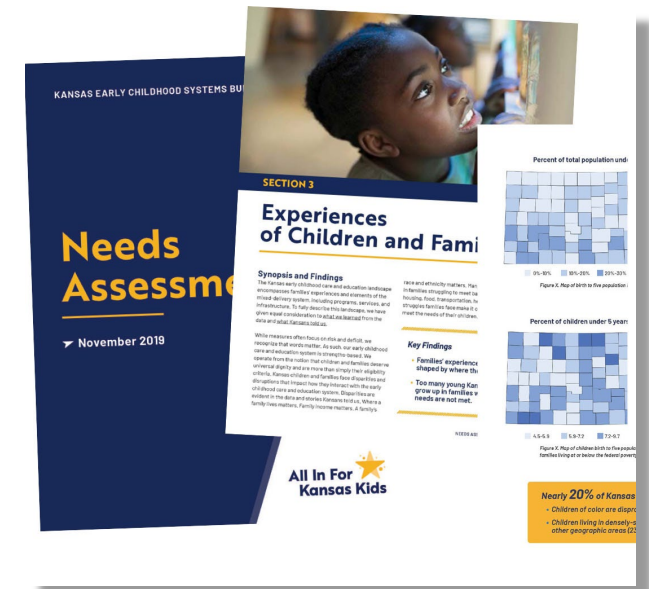


Needs Assessment

- Released 2/6/2020
- Available online – Kansas Children's Cabinet website kschildrenscabinet.org/needs-assessment/
- Helpful in fostering community discussions, making decisions, state and regional perspectives, etc.

Needs Assessment

All In For
Kansas Kids





EARLY CHILDHOOD SYSTEMS-BUILDING STRATEGIC PLAN UPDATE

STATE DIRECTORS TEAM



Strategic Plan

Our Strategic Plan will:

- Transform the experiences of children and families who need equitable access to high quality early care and education no matter where they live.
- Reduce the burden of improving local systems by giving communities flexibility to deliver high quality services.
- Assess how funds are spent, build and scale what works, and refine our data systems.

Strategic Plan

All In For  **Kansas Kids**

Strategic Plan Outline

Executive Summary

Introduction

- Importance of Early Childhood
- History of Early Childhood Care and Education (ECCE) in Kansas
- Who are youngest Kansans and what will empower them to thrive?
- Vision

Guiding Principles

Our Process

Strategic Plan

**All In For
Kansas Kids**



Strategic Plan Outline

Overview of Building Blocks (*Strong Families, Healthy Development, Early Learning*)

Strategic Plan Commitments (*Workforce, Communities, Systems Alignment, Innovation*)

- Need/Challenges
- Goals and Strategies

Strategic Plan

All In For  **Kansas Kids**

Building Blocks

Strong Families: Kansas kids and families are stronger when their basic needs are met.

Healthy Development: Kansas kids and families thrive when they have equitable access to comprehensive health and development services.

Early Learning: Kansas kids are prepared for success in kindergarten and beyond when their families have equitable access to quality care and early learning environments.

Strategic Plan

All In For
Kansas Kids



Commitments - Workforce

Workforce: Kansas will lead the way in developing, supporting, and valuing early childhood professionals.

- Kansas recruits, retains, and advances a diverse early childhood care and education workforce that is prepared and qualified to meet the changing needs of young children and families.
- Policies, procedures, and infrastructure support safe, stable, and nurturing environments for young children and families.

Strategic Plan

**All In For
Kansas Kids** 

Commitments – Families and Communities

Connected Families, Connected Communities: Kansas will empower and equip communities to create the best environments to raise a child.

- Families are equal partners in the planning, development, delivery, and evaluation of programs and services that affect their children and families.
- Communities and early childhood providers have the tools and information needed to streamline access to and navigation of high-quality services for families.
- Communities are empowered to strengthen the quality and reach of early childhood care and education services in ways that address the unique needs of their population and geographical location.

Strategic Plan

**All In For
Kansas Kids**



Commitments – Systems Alignment

Systems Alignment: Kansas will align the early childhood care and education system for maximum impact.

- The Kansas early childhood system is coordinated to optimize the well-being of young children and families.
- Policies, practices, and programming are child/family-centered to reflect the diverse needs and choices of all families.
- Early childhood data are integrated to measure what matters for children and families in the early years and beyond.

Strategic Plan

**All In For
Kansas Kids**



Commitments - Innovation and Scaling

Innovation and Scaling: Kansas will champion innovation and create opportunities to invest in the future of Kansas kids

- Kansas has policy and funding structures that support high-quality and innovative programming for children and families.
- Kansas is on the cutting edge of innovative and future-oriented practices that transform the lives of young children and families.

Strategic Plan

**All In For
Kansas Kids**



Strategic Plan Feedback

- What is missing?
- What could be strengthened?
- What are recommendations or action steps at the individual, community, and state level?
- <https://kschildrenscabinet.org/strategic-plan/>

Strategic Plan

**All In For
Kansas Kids**



Strategic Plan Next Steps

- **Feedback Phase** – Now through February 24
- <https://kschildrenscabinet.org/strategic-plan/>
- **Final Design Phase** – February/March
- **Completion Date** – April 2020

Strategic Plan

**All In For
Kansas Kids**





EX-OFFICIO REPORTS





EARLY CHILDHOOD ADVISORY COUNCIL

MELISSA ROOKER



Early Childhood Advisory Council

- Executive Order 20-02 – Signed 2/5/2020
- Cabinet as the State Advisory Council on Early Childhood Education and Care
- Early Childhood Recommendations Panel – Cabinet-approved volunteers with technical expertise (*monthly*)
- Nominations process available soon on Children's Cabinet website

Governance

**All In For
Kansas Kids**



What's Next?

- Completed Needs Assessment available online
- DRAFT Strategic Plan available for feedback – February 7-24
- Strategic Plan – April 2020
- Webinars and Email Updates
<https://kschildrenscabinet.org/early-childhood>

Stay Connected

**All In For
Kansas Kids**



UPCOMING MEETINGS

All Cabinet meetings will be held on the first Friday of every other month:

- **April 3** (Kansas Association of School Boards)
- **June 5** (KASB)
- **August 7** (Location TBA)
- **October 2** (Location TBA)
- **December 4** (Location TBA)