

Transforming Goals Into Reality

The Cabinet's ABC's

The Cabinet is invested in maximizing positive outcomes for children and families. Through its financial portfolio, the Cabinet focuses on programming that supports at-risk children ages birth to five delivered by community- or agency-based initiatives that are grounded in research. This position statement articulates the Cabinet's philosophy on how to achieve the goals outlined in the Blueprint for Early Childhood.



Acts

On evidence of success, using innovative thinking and cutting-edge approaches

Builds

On what works and expands on successful services



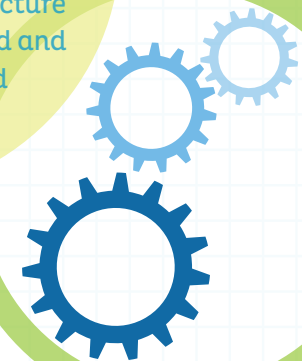
The ability for all Cabinet grantees to participate in an outcome-based system

Creates

Mechanisms that allow action to occur automatically and efficiently

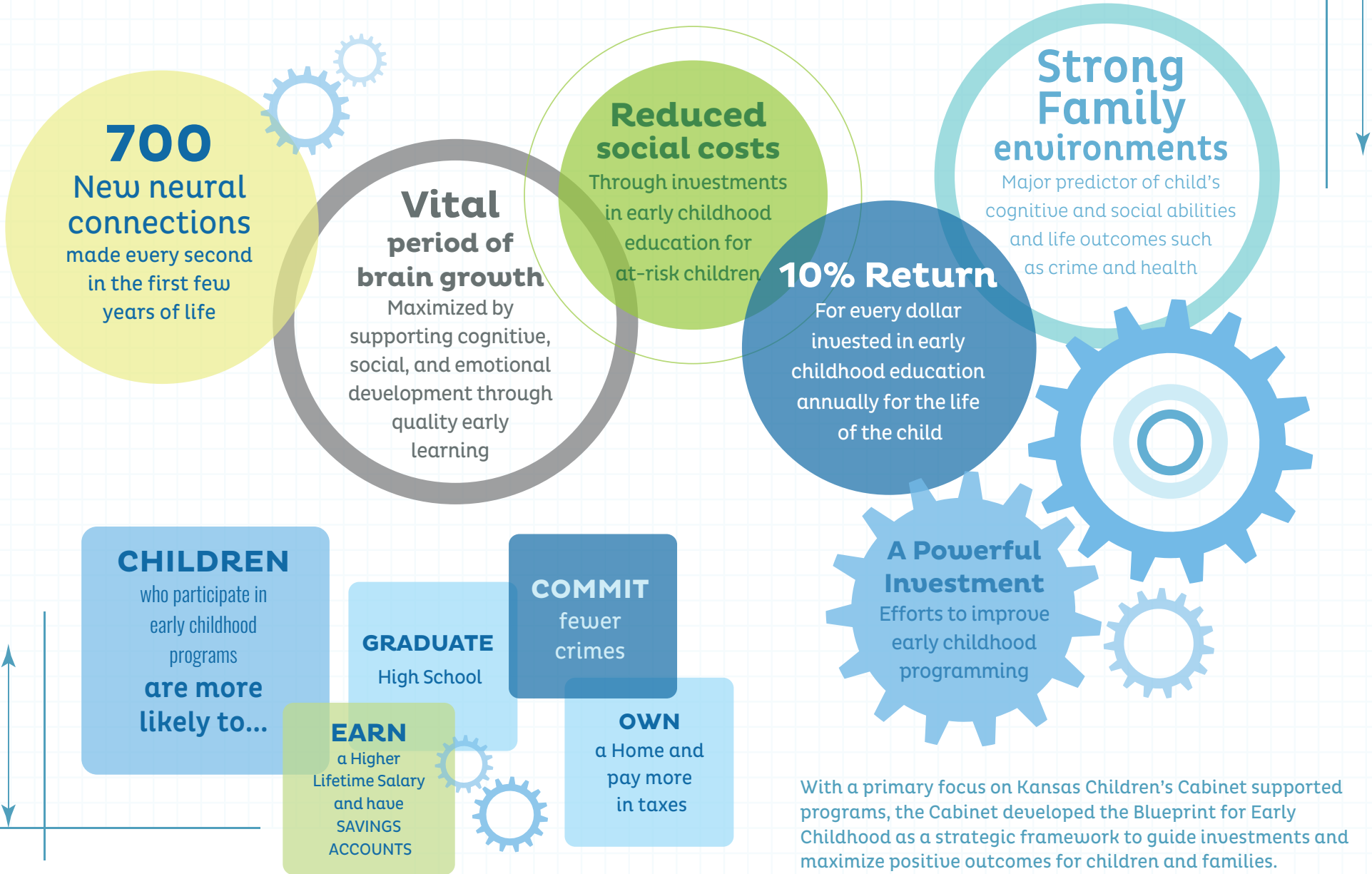


An innovative policy structure where funding is targeted and outcomes are shared



Investing in the Future of Kansas

Healthy Development, Strong Families, Early Learning



Sources: Center on the Developing Child (Harvard University), Partnership for America's Economic Success, Pew Center on the States, The Heckman Equation, ReadyNation

What is the Blueprint for Early Childhood?

Building a Strong Foundation for Children and Families

An expression of the Kansas Children's Cabinet and Trust Fund's vision for early childhood in Kansas, the Blueprint for Early Childhood ("Blueprint") is a strategic framework to optimize child and family well-being. The Blueprint will be used to align the Cabinet's investment portfolio and monitor progress toward goals.



"Often the most powerful change comes from the community level and develops from the alignment of stakeholders working together in a coordinated way."



- Amanda Adkins, Kansas Children's Cabinet and Trust Fund Chair

Implementation

Built on past systems' work, the Blueprint is a forward-looking guide for expanding an effective early childhood system of services and supports for young children and their families.

Areas of Impact

The Cabinet identified Areas of Impact within each of the Building Blocks - Healthy Development, Strong Families, and Early Learning that aim to unite past and current collaborative work products.

What Do Healthy Development, Strong Families, and Early Learning Look Like?

While the path to achieve success may vary, the Cabinet's vision of success is intended to serve as a guide for innovative program design, partnership development, implementation and tracking toward long-term outcomes for children and families.

Current Measures

The Cabinet is committed to a system of shared measurement and strong accountability to tell the story of early childhood investments in Kansas. Common measures are the tools currently being used to measure short-term and intermediate outcomes in Early Childhood Block Grant (ECBG) and Community-based Child Abuse and Neglect Prevention (CBCAP) programs.

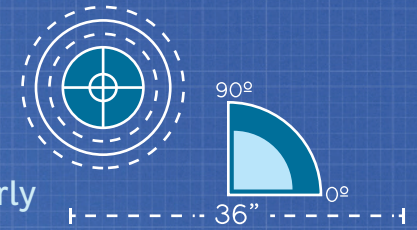
Community Collaboration

Moving the needle on Healthy Development, Strong Families, and Early Learning will require creative community collaboration across sectors, involving multiple partners working toward a shared vision of high quality, accessible, affordable programs for young children and families.

Blueprint for Early Childhood

Building a Strong Foundation for Children and Families

The **Kansas Children's Cabinet and Trust Fund** recognizes early childhood as a critical period of intervention that establishes a child's foundation for school and life success. We are therefore committed to nurturing a culture of public-private partnerships in early childhood programming where diversity of thought is an asset and past work is valued.



Goals

public-private Partnerships **Community Collaboration** shared vision

Healthy Development

- PRIMARY CARE
- SOCIAL-EMOTIONAL DEVELOPMENT
- EARLY IDENTIFICATION



AREAS OF IMPACT

- Ensure outreach, education, and ongoing support for pregnant women (particularly underserved populations)
- Promote early and comprehensive prenatal care
- Increase identification, access/availability and quality of services
- Increase insurance coverage for pregnant women and children
- Support all children in having a medical home
- Promote access to oral health and vision care
- Integrate and screen universally for healthy development
- Improve access to mental health services through partnerships
- Promote inclusion of children with disabilities into natural environments
- Promote public-private partnerships

Strong Families

- PARENT SUPPORT
- SAFE, STABLE AND NURTURING RELATIONSHIPS (SSNRs)
- COMMUNITY ENGAGEMENT



AREAS OF IMPACT

- Support parent involvement and leadership
- Promote safe, stable, and nurturing relationships to ensure children have strong, healthy starts
- Promote cross-sector partnerships to support comprehensive needs of families
- Engage non-traditional stakeholders
- Promote, evaluate, and enhance evidence-based family support programs
- Promote the facilitation of peer-to-peer support opportunities
- Promote opportunities for families to earn a living wage
- Promote public-private partnerships

Early Learning

- CHILD CARE
- PRE-K
- EARLY LITERACY



AREAS OF IMPACT

- Promote community-based, school-based, and faith-based early learning experiences
- Support economic development of child care businesses
- Ensure high-quality care for all children by promoting adequate funding for core services
- Ensure high-quality care for all children by supporting the implementation of a statewide quality rating and improvement system
- Promote effective transitions into school for at-risk populations, including voluntary, full-day kindergarten
- Support inclusive and culturally sensitive training for early childhood professionals based on established core competencies
- Support the use of early learning standards to increase consistency and quality of services
- Promote public-private partnerships

As a baseline for this Blueprint, collaborative work products in which the Cabinet has participated, such as the Kansas Early Childhood Comprehensive System Plan, the Kansas School Readiness Framework, and the Kansas Strengthening Families Plan, have been used. Existing plans such as the Governor's Roadmap for Kansas, the Maternal and Child Health Strategic Plan (KDHE), the Child Care and Development Fund State Plan (DCF), and the Kansas Head Start State Collaboration Office Priority Areas (DCF) will also continually inform the Blueprint to support collective impact.

Healthy Development

WHAT DOES HEALTHY DEVELOPMENT LOOK LIKE?

Child

- Pregnant women have access to prenatal care
- Infants are born at adequate birthweight
- Mothers breastfeed at least 6 months
- Children are current with immunizations
- Children reach developmentally appropriate milestones
- Early childhood professionals have specialized early childhood mental health training

COMMON MEASURES*

- Ages and Stages Questionnaire (ASQ) - 3
- ASQ: Social-Emotional
- Devereaux Early Childhood Assessment (DECA) I, (DECA) T, (DECA) P2
- Individual Growth & Development Indicators (IGDI), myIGDI

COMMUNITY COLLABORATION

- | | |
|------------------|-----------------------|
| Businesses | Foundations |
| Child Care | Local Health Depts |
| Community Orgs | Medicaid |
| Faith-Based Orgs | Mental Health Centers |
| Families | State Agencies |
| Family Supports | Other |

Strong Families

WHAT DO STRONG FAMILIES LOOK LIKE?

Family

- Fewer children live in poverty
- Families can afford child care
- More children are born to mothers with a high school diploma or more
- Family support programs are able to meet the demand for services
- No children experience abuse or neglect

COMMON MEASURES*

- HOME Inventory - Infant/Toddler
- HOME Inventory - Early Childhood
- Keys to Interactive Parenting Scale (KIPS)
- Protective Factors Survey (PFS)

COMMUNITY COLLABORATION

- | | |
|------------------|----------------|
| Businesses | State Agencies |
| Community Orgs | Universities |
| Faith-Based Orgs | Other |
| Families | |
| Family Supports | |
| Foundations | |

Early Learning

WHAT DOES EARLY LEARNING LOOK LIKE?

Educational Environment

- Child care facilities & homes are able to meet the demand for services
- Early learning programs are able to meet the demand for services
- Programs are compliant with licensing regulations
- Early learning programs are high quality
- Early childhood professionals are competent, credentialed, and effective

COMMON MEASURES*

- Devereaux Early Childhood Assessment (DECA) I, (DECA) T, (DECA) P2
- Classroom Assessment Scoring System (CLASS) - Toddler
- CLASS Pre K
- Individual Growth & Development Indicators (IGDI), myIGDI

COMMUNITY COLLABORATION

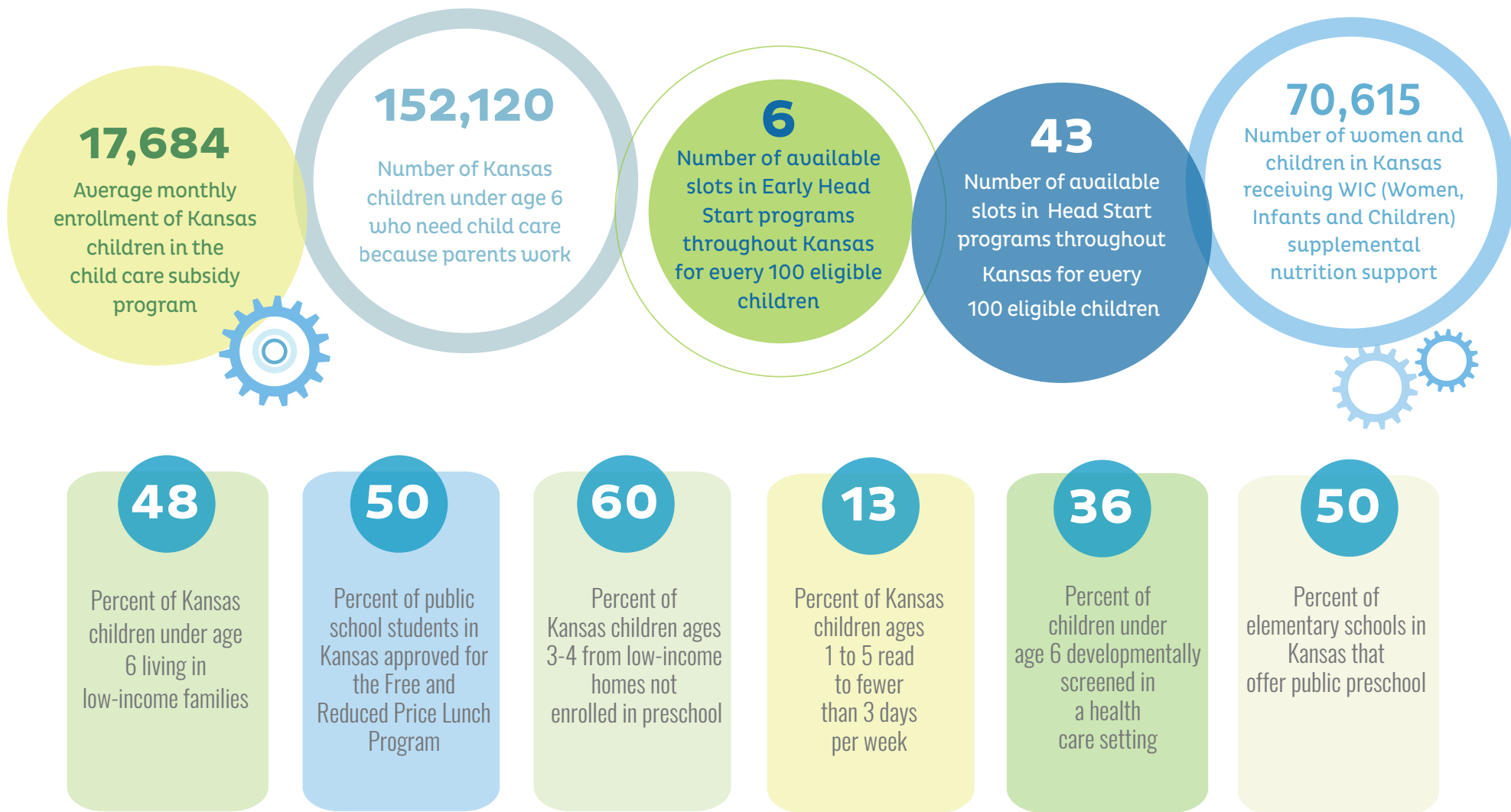
- | | |
|------------------|----------------------|
| Businesses | Foundations |
| Child Care | Health Professionals |
| Community Orgs | Libraries |
| Faith-Based Orgs | Pre-K Programs |
| Families | State Agencies |
| Family Supports | Other |



*These common measures are currently used by Cabinet-funded ECBG and CBCAP programs. All Cabinet-funded programs are invited to use these measures.

Why Does Kansas Need Investments in Early Childhood?

Building a Strong Foundation for Children and Families

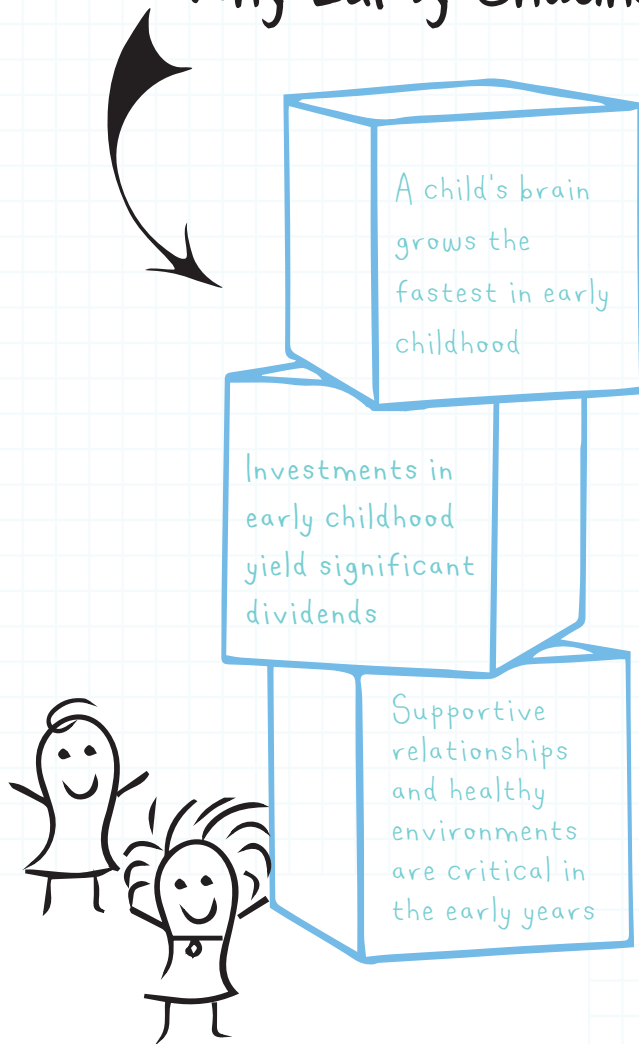


Sources: Child Care Aware of Kansas, Kids Count Data Center, The Heckman Equation, U.S. Department of Labor, U.S. Department of Agriculture

Blueprint for Early Childhood

Building a Strong Foundation for Children and Families

Why Early Childhood?



Where must we focus?

The Building Blocks

